



Autumn Rise, London, W4 4NG

£549,950

WHITMAN & CO.

SALES · LETTINGS · COMMERCIAL

- Triple aspect apartment
- Flooded with light
- Secure allocated parking
- Landmark building
- Open plan kitchen/reception room
- Close to shops, cafes and restaurants

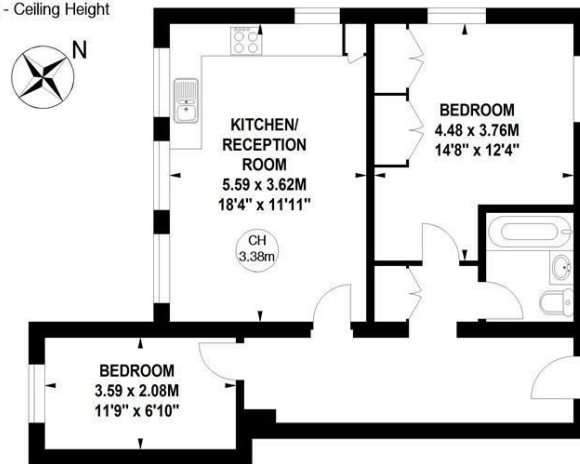
Tenure - Leasehold
 Lease length - 114 years remaining
 Ground Rent - £300 pa
 Service Charge - £2962 pa
 Local authority - Hounslow
 Council Tax - Band E

Sutton Court Road, W4

Approximate gross internal area

62.52 sq m / 673 sq ft

Key :
 CH - Ceiling Height



First Floor

Not to scale, for guidance only and must not be relied upon as a statement of fact.
 All measurements and areas are approximate only

THE PROPERTY

An immaculately presented triple aspect apartment located on the first floor of this landmark building moments from Chiswick High Road's extensive facilities. The property is flooded with light and comprises a spacious entrance hall with fitted cupboards, dual aspect open plan kitchen/reception room, large dual aspect double bedroom with fitted wardrobes, modern bathroom, second bedroom with fitted wardrobe, secure allocated parking space, fabulous communal entrance hall, leasehold with the option to buy into the freehold. Autumn Rise is in a superb location close to Turnham Green and Chiswick High Road's shops, cafes and restaurants. Transport links include Chiswick Park and Turnham Green Stations, local bus routes and the A4/M4 for routes in and out of London.

SITUATION



5-7 Turnham Green Terrace, Chiswick, London, W4 1RG

Tel 020 8747 8800

E-mail sales@whitmanandco.com

Website www.whitmanandco.com