

Greenend Road, London, W4 1AS

£650,000

WHITMAN & CO.

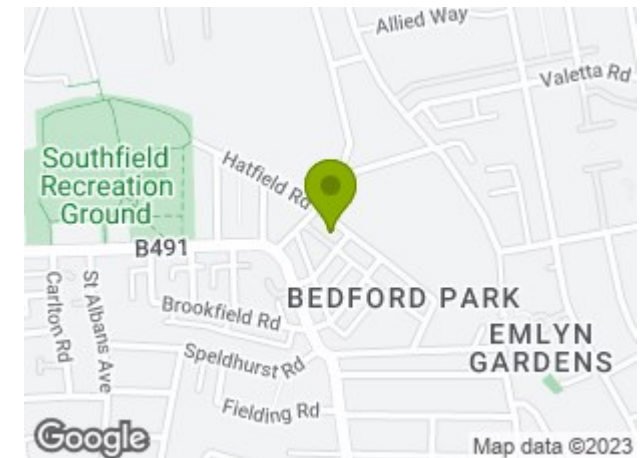
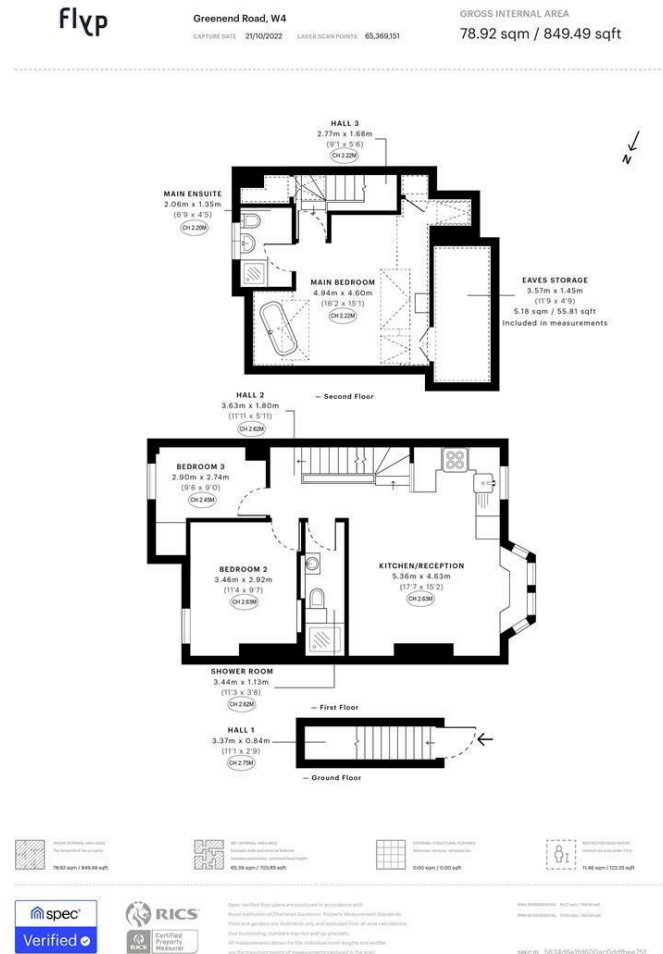
SALES · LETTINGS · COMMERCIAL

- Tenure - Leasehold
Lease length - 144 years remaining
Ground Rent - £25 per annum
Service Charge - No service charge
Local authority - Ealing
Council tax - Band D

This well-appointed, newly renovated, bright, and spacious split-level apartment of approximately 850 Sqft- 79 SqM is set across the upper floors (first and second) of this charming period property located just north of the Bedford Park conservation area. The apartment has been significantly improved by the existing owners and benefits from being a turnkey property.

The accommodation comprises an entrance hallway, a large open plan living/kitchen/dining space, two double bedrooms, a study/guest bedroom, two bathrooms and a roll-top "Freestanding Bath", perfectly placed within the principal bedroom. Chiswick High Road, with its extensive array of shops, cafes and restaurants are a short walk away. Transport links include Turnham Green station, local bus routes and the A4/M4 for routes in and out of London. No onward chain.

SITUATION



Tel 020 8747 8800

Website www.whitmanandco.com

Whitman & Co. for themselves and for the vendors give notice that these particulars do not constitute part of, an offer of contract. All statements contained in these particulars are made without responsibility on the part of Whitman & Co. or the vendor. None of the statements contained in these particulars is to be relied upon as statements or representations of facts. Any intending purchaser must satisfy himself by inspection or otherwise as to the correctness of each of the statements contained in these particulars. The vendor does not make or give, and neither Whitman & Co. nor any person in their employment has any authority to make or give, any representation or warranty whatever in relation to the property.