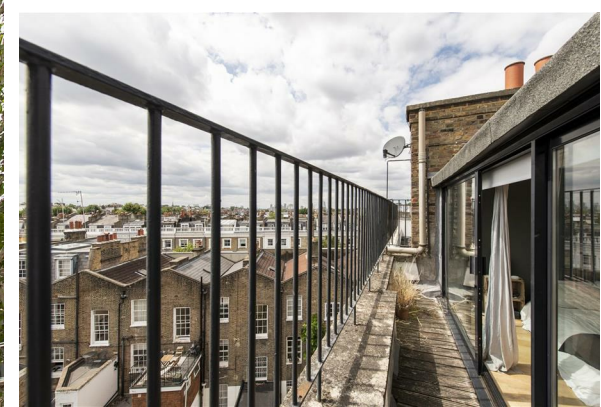


NOAHS



Durham Terrace, London

£1,325,000

- Two Bedrooms | One Bathroom
- Modern South Facing High Gloss Open Plan Kitchen
- Proximity to Hyde Park
- Top Floor Duplex Apartment | Third & Fourth Floor
- 30ft+ Living Accommodation Stretching From Front to Back
- Royal Oak Underground Station (0.2M)

THE PROPERTY

A gorgeous two bedroom top floor split level two bedroom south facing apartment on one of the most sought after streets in Notting Hill.

Entering on the second floor the apartment is arranged over three floors (second, third & fourth). On the third floor there is a welcoming hallway leading through to the very large open plan kitchen reception room. There is a stylish contemporary kitchen and dining room that leads to a spacious and well-proportioned reception room, ideal for entertaining. The flat features beautiful wooden floors throughout, large windows and impressive volumes.

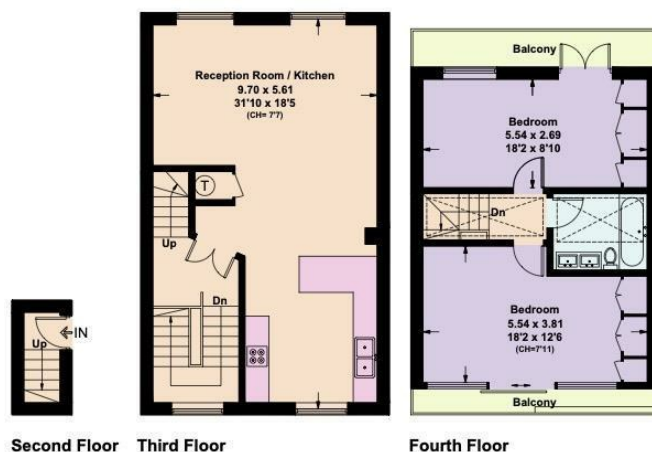
Durham Terrace is situated in a quiet tree lined street close to the local amenities of Westbourne Grove. The maisonette is excellently located for transport via bus and tube.

Queensway Underground station is within walking distance providing access to the Central Line. Bayswater Underground station and Royal Oak station are also within close proximity offering easy access to Central London via the Circle Line and Hammersmith & City Line.

SITUATION

Durham Terrace, W2

Approximate Floor Area = 98.6 sq m / 1061 sq ft
Including Limited Use Area (1.0 sq m / 11 sq ft)



This plan is for layout guidance only. Not drawn to scale unless stated. Windows and door openings are approximate. Whilst every care is taken in the preparation of this plan, please check all dimensions, shapes and compass bearings before making any decisions reliant upon them. (ID663344)

Directions