



**A DELIGHTFUL TWO BEDROOM BUNGALOW WITH POTENTIAL TO EXTEND (STPP)**

---

Woodford Crescent, Pinner, HA5 3UA

**ROBSONS**



# A DELIGHTFUL TWO BEDROOM BUNGALOW WITH POTENTIAL TO EXTEND (STPP)

Woodford Crescent, Pinner, HA5 3UA

**ENTRANCE HALLWAY • GENEROUS LOUNGE  
• TWO DOUBLE BEDROOMS • KITCHEN /  
BREAKFAST ROOM • FAMILY SHOWER ROOM  
• STUNNING REAR GARDEN • OFF-STREET  
PARKING • CAR PORT • POTENTIAL TO EXTEND  
(STPP)**

## Description

Positioned in a peaceful yet convenient location within easy reach of local amenities, is this delightful two bedroom detached bungalow that would benefit from minor cosmetic updating to unlock its full potential.

The property comprises an entrance hallway providing access to all the main living areas. There is a generous front aspect lounge that is flooded with natural light, a well-equipped kitchen to the rear that offers a range of both base and eye level units with an integrated oven, and a family shower room. Completing the property are two double bedrooms with one benefiting from fitted wardrobes.







Externally this delightful home features a stunning rear garden that has been beautifully maintained and boasts a lawn area with manicured hedges and a small patio area for alfresco dining in the summer months. To the front there is a gated driveway providing off-street parking, and a car port.

### Location

Woodford Crescent is situated in a popular, family-friendly location just moments from Northwood Hills which boasts an array of shopping facilities, restaurants, coffee houses and popular supermarkets. Transport facilities include local bus links and the Metropolitan Line at both Pinner and Northwood Hills tube station, both of which provide a fast and frequent service into the heart of Central London and beyond. The area is well served for primary and secondary schooling, children's parks/playgrounds and recreational facilities.

### Additional Information

Guide Price: Price on Application

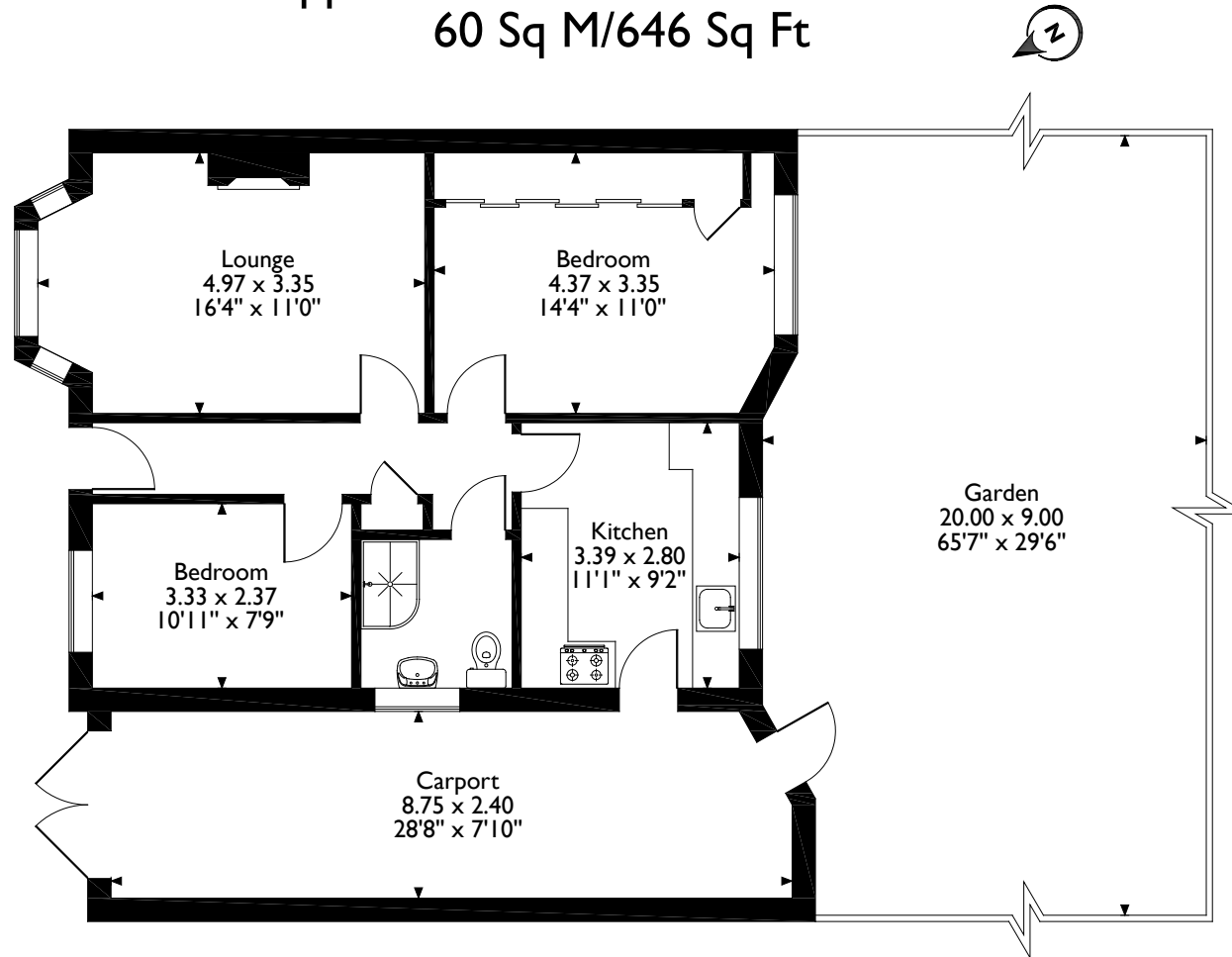
Tenure: Freehold

Local Authority: London Borough of Hillingdon

Energy Efficiency Rating: Band D



Woodford Crescent, Pinner  
Approximate Gross Internal Area  
60 Sq M/646 Sq Ft



**Ground Floor**

Please note that the location of doors, windows and other items are approximate and this floorplan is to be used for illustrative purposes only. Unauthorized reproduction is prohibited.

**ROBSONS**

1 High Street, Pinner, Middlesex, HA5 5PJ  
Tel: 0208 866 8083 Pinner@robsonswb.com  
[www.robsonswb.com](http://www.robsonswb.com)

[www.the-londonoffice.co.uk](http://www.the-londonoffice.co.uk)  
40 ST JAMES'S PLACE SW1

Important notice: Robsons, their clients and any joint agents give notice that 1: They are not authorised to make or give any representations or warranties in relation to the property either here or elsewhere, either on their own behalf or on behalf of their client or otherwise. They assume no responsibility for any statement that may be made in these particulars. These particulars do not form part of any offer or contract and must not be relied upon as statements or representations of fact. 2: Any areas, measurements or distances are approximate. Plot sizes and dimensions are taken from Promap and are approximate. The text, photographs and plans are for guidance only and are not necessarily comprehensive. It should not be assumed that the property has all necessary planning, building regulation or other consents and Robsons have not tested any services, equipment or facilities. Purchasers must satisfy themselves by inspection or otherwise.