



CHATTERTON REES

Sherbrooke Road SW6 - Asking price £619,950



A two bedroom garden flat in Fulham.

A brilliant two bedroom garden flat in Fulham. The property has a lovely bay fronted reception room which is semi open to the kitchen with both bedrooms to the rear one has an en suite bathroom and both have direct access to the garden area.

Located on Shrerbrooke Road in Fulham you are ideally positioned only a short distance from all of the shops and cafes on Munster Road whilst not being far from Parsons Green or Fulham Broadway for transport.





Chatterton Rees Estate Agents, 173 New Kings Road, Fulham, SW6 4SW
T: 020 3780 0580
E: Sales@chattertonrees.co.uk
www.chattertonrees.co.uk


CHATTERTON | REES



CHATTERTON | REES

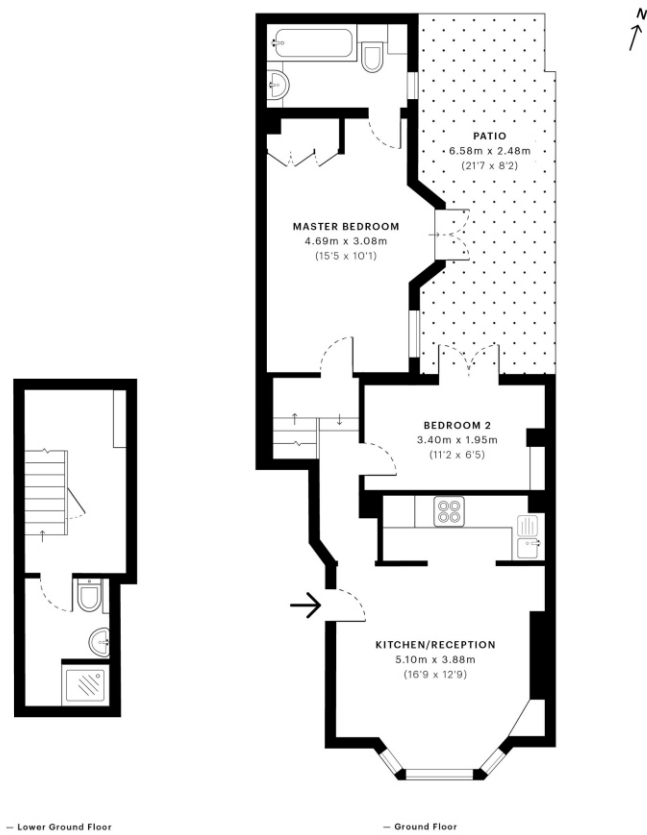


Sherbrooke Road, SW6

CAPTURE DATE
25/09/2019

LASER SCAN POINTS
23,394,497

GROSS INTERNAL AREA
55.9 Sqm / 602.2 Sqft



GROSS INTERNAL AREA
The footprints of the property
55.9 Sqm / 602.2 Sqft

NET AREA (INTERNAL)
Excludes walls and external features
53.5 Sqm / 575.5 Sqft

EXTERNAL STRUCTURAL FEATURES
Balconies, terraces, verandas etc.
0.0 Sqm / 0.0 Sqft

RESTRICTED HEAD HEIGHT
Limited use area under 1.8m
0.0 Sqm / 0.0 Sqft



Spec floor plans are produced in accordance with the Royal Institution of Chartered Surveyors' Property Measurement Standards. Plots and gardens are illustrative only and are excluded from all area calculations. Due to rounding, numbers may not add up precisely. All measurements shown for the individual room lengths and widths are the maximum points of measurements captured in the scan.



IPMS 3B RESIDENTIAL
55.4 Sqm / 596.6 Sqft

IPMS 3C RESIDENTIAL
53.6 Sqm / 576.9 Sqft

SPEC ID
5d80c6e9facc640a14af576d