



Waldegrave Road SE19
OIEO £250,000

0208 702 9333
[pedderproperty.com](https://www.pedderproperty.com)

pedder



In general

- A share of the freehold
- Elegantly finished accommodation
- Contemporary kitchen / diner
- Characterful church conversion
- Central location
- Newly fitted bathroom
- Fitted storage

In detail

A rarely available high specification studio apartment set on the ground floor of a characterful church conversion moments from Crystal Palace station.

This elegantly finished property includes gothic features from the church and a modern kitchen / diner which extends into the original turret.

Fresh decor adds to an immediately enjoyable space, as does a newly fitted bathroom, shuttered windows and contemporary grey replacement flooring.

Other highlights include ample fitted storage, secure entry, and a share of the freehold.

Waldegrave Road is well placed for multiple amenities, bars and restaurants at the Triangle, as well as Crystal Palace park.

EPC: D | Council Tax Band: C | Lease: 93 years remaining | SC: £70PM | GR: N/A

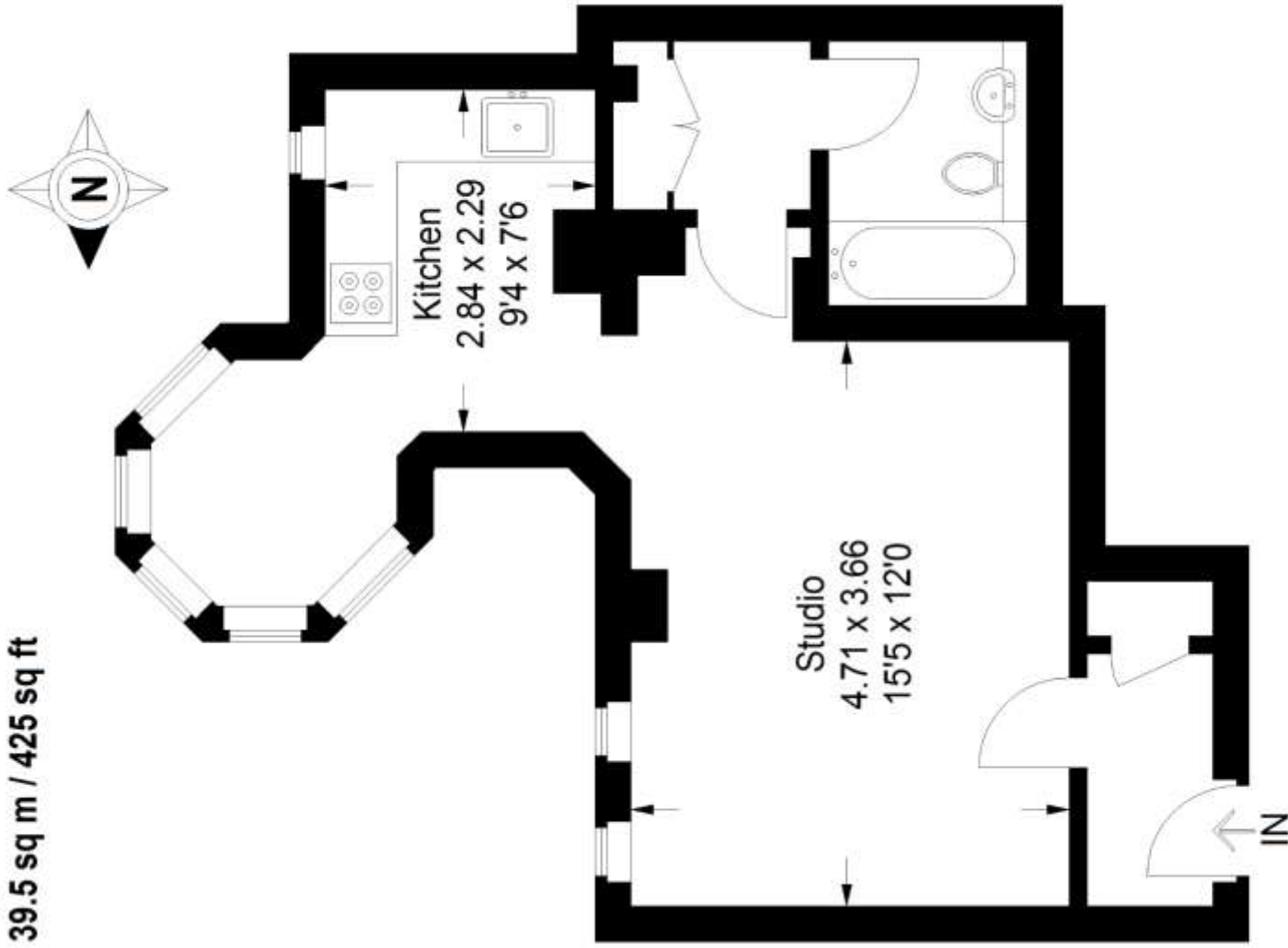


Floorplan

New Church Court, SE19

Approximate Gross Internal Area

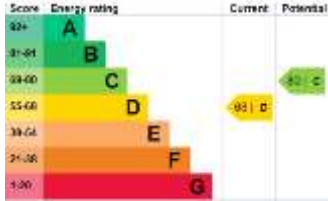
39.5 sq m / 425 sq ft



Ground Floor

Copyright www.pedderproperty.com © 2022

These plans are for representation purposes only as defined by RICS - Code of Measuring Practice. Not drawn to Scale. Windows and door openings are approximate. Please check all dimensions, shapes and compass bearings before making any decisions reliant upon them.



Pedder Property Ltd trading as Pedder for themselves and for the vendor/landlord of this property whose agents they are, give notice that (1) these particulars do not constitute any part of an offer or contract, (2) all statements contained within these particulars are made without responsibility on the part of Pedder or the vendor/landlord, (3) whilst made in good faith, none of the statements contained within these particulars are to be relied upon as a statement of representation or fact, (4) any intending purchaser/tenant must satisfy him/herself by inspection or otherwise as to the correctness of each of the statements contained within these particulars, (5) the vendor/landlord does not make or give either Pedder or any person in their employment any authority to make or give representation or warranty whatsoever in relation to this property.