



149 Upper Richmond Road, Putney, London, SW15 2TX

t: 0208 788 8822

e: putney@allanfuller.co.uk

www.allanfuller.co.uk

## Allestree Road London, SW6

A fabulous ground floor conversion situated in a tree lined Fulham location giving easy access to Munster Village, Fulham Road and Parsons Green.

Located on the ground floor of this well-maintained period house, the property offers a wonderful bright open-plan reception/dining room/kitchen which has been extended and spans the width of the property, two double bedrooms both with fitted cupboards, a modern family bathroom and hallway with utility cupboards and plenty of storage. With a share of the freehold and access to a very private and tranquil garden via the bi-folding doors.

Set within a quiet residential street, gives easy access to the boutique shops, restaurants and cafes on Munster Road as well as the transport links of Fulham Road and Parsons Green. With the green open spaces of Bishops Park and the River Thames just a stroll away.

EPC - C Council Tax: Band D



£700,000

Share of Freehold



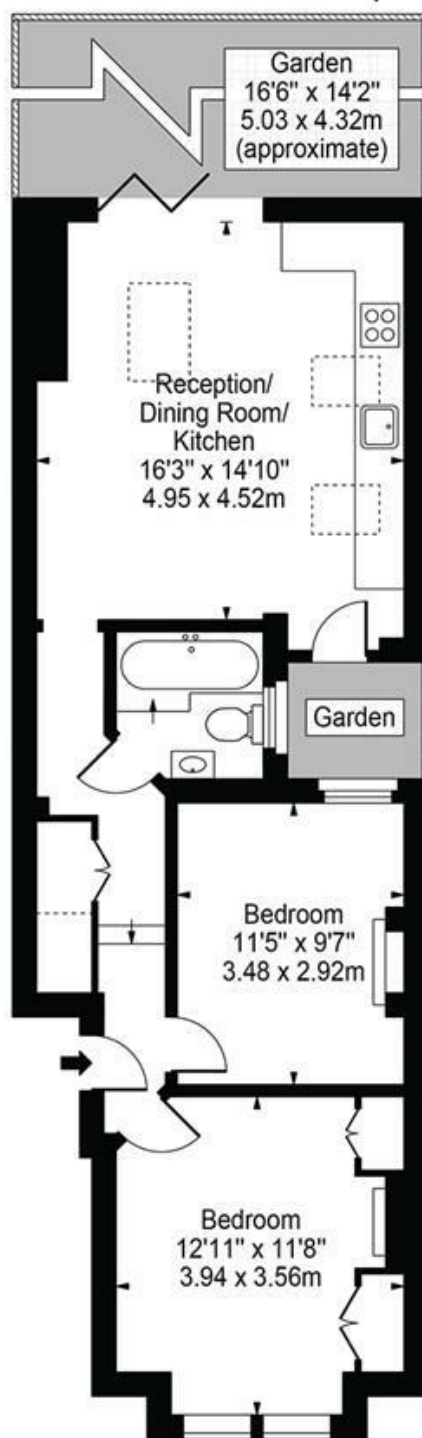






# Allestree Road, SW6

Approx. Gross Internal Area 625 Sq Ft - 58.06 Sq M



Ground Floor

ALLAN FULLER  
— EST. 1983 —

©

For Illustration Purposes Only - Not To Scale Floor Plan by Mira Nikolova Photography

This floor plan should be used as a general outline for guidance only and does not constitute in whole or in part an offer or contract.  
Any intending purchaser or lessee should satisfy themselves by inspection, searches, enquiries and full survey as to the correctness of each statement.  
Any areas, measurements or distances quoted are approximate and should not be used to value a property or be the basis of any sale or let.

With regards to any information supplied by us in relation to lease, ground rent and service charge it is essential that you have this information checked by your solicitor. We have transmitted information supplied to us by the vendor of the property but we have not been able to inspect the lease to check its accuracy. Please note that we have not tested any of the equipment or utilities at this property, nothing in these particulars shall be deemed a statement that the property is in good condition or otherwise nor that any of the services or facilities are in good working order. Measurements are approximate they were taken with a sonic tape, are as accurate as possible and usually measured from the widest point of any room. Description provided herein represents the opinion of the author, is given in good faith but should not be constructed as statements of fact. The particulars and photograph are for guidance only.