



21 Sierra Drive

| Aylesbury | Buckinghamshire | HP18 0YQ

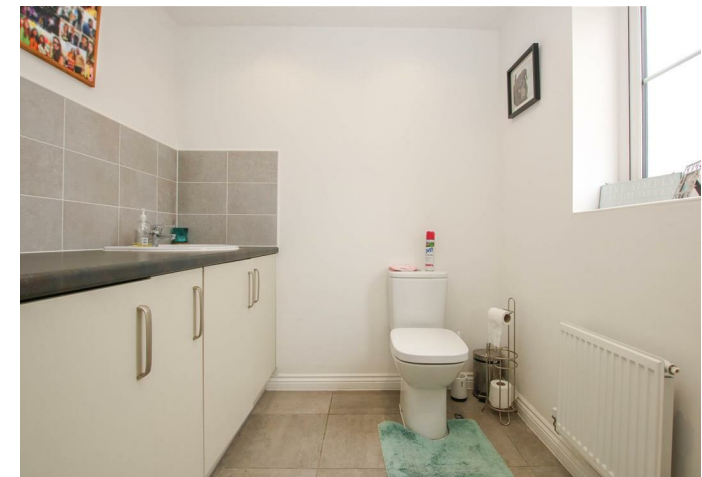


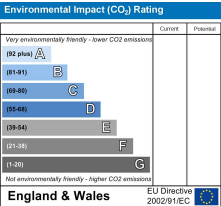
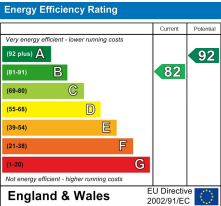
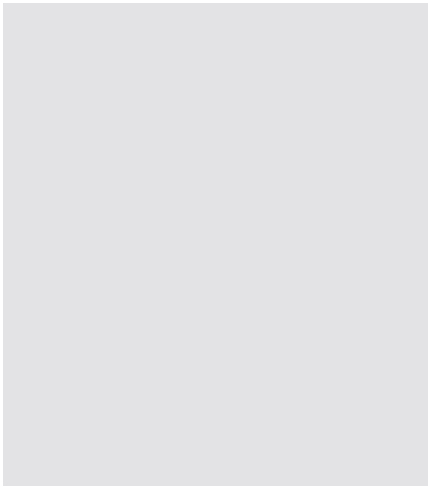
21 Sierra Drive

| Aylesbury | Buckinghamshire | HP18 0YQ

NEW INSTRUCTION!! Williams Properties are delighted to present this three bedroom detached house on the popular Berryfields development in Aylesbury. The property is in high order throughout and consists of a kitchen/diner, living room, WC/utility room, three bedrooms, family bathroom and an en-suite, enclosed rear garden, single garage driveway parking for one vehicle, views over fields to the front of the property. Viewing highly recommended. Available 16th July 2022.

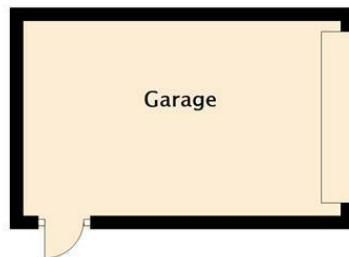
Per month £1,525 Per month



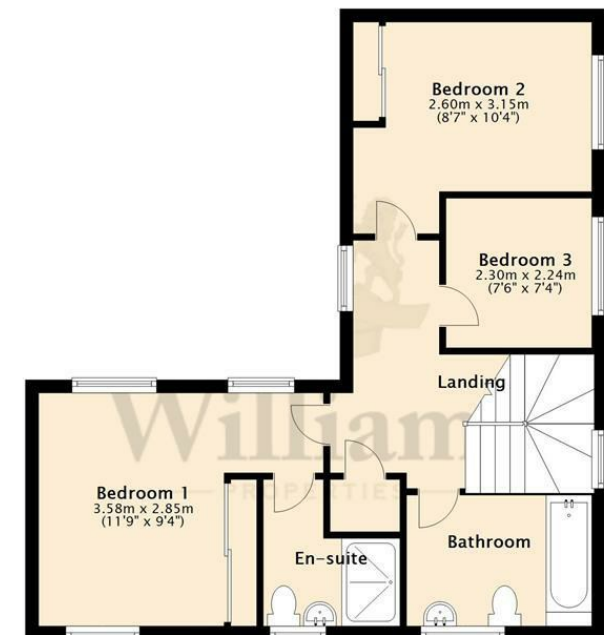
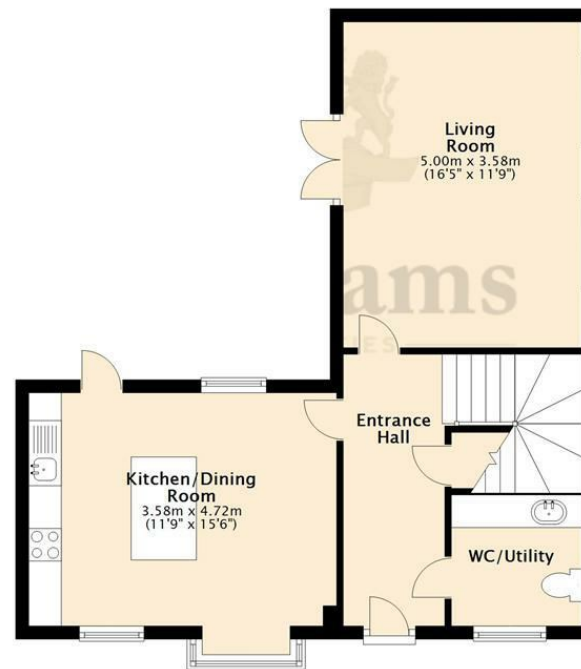




Ground Floor
Approx. 65.7 sq. metres (707.3 sq. feet)



First Floor
Approx. 50.9 sq. metres (548.3 sq. feet)



Total area: approx. 116.6 sq. metres (1255.6 sq. feet)

This plan is for layout guidance only. Not drawn to scale unless stated. Windows and door openings are approximate. Whilst every care is taken in the preparation of this plan, please check all dimensions, shapes & compass bearings before making any decisions reliant upon them.

Plan produced using PlanUp.



Williams Properties
8-10 Temple Street
Aylesbury
Buckinghamshire HP20 2RQ

Email: aylesbury@williams.properties
Web: www.williams.properties
Tel: 01296 435600

For clarification, we wish to inform perspective purchasers that we have prepared these sales particulars as a general guide. We have not carried out a detailed survey, nor tested the services, appliances and specific fittings. Room sizes are approximate and rounded: they are taken between internal wall surface and therefore include cupboards/shelves, etc. Accordingly, they should not be relied upon for carpets and furnishings. Formal notice is also given that all fixtures and fittings, carpets, curtains/blinds and kitchen equipment, whether fitted or not are deemed removable by the vendor unless specifically itemised within these particulars.