

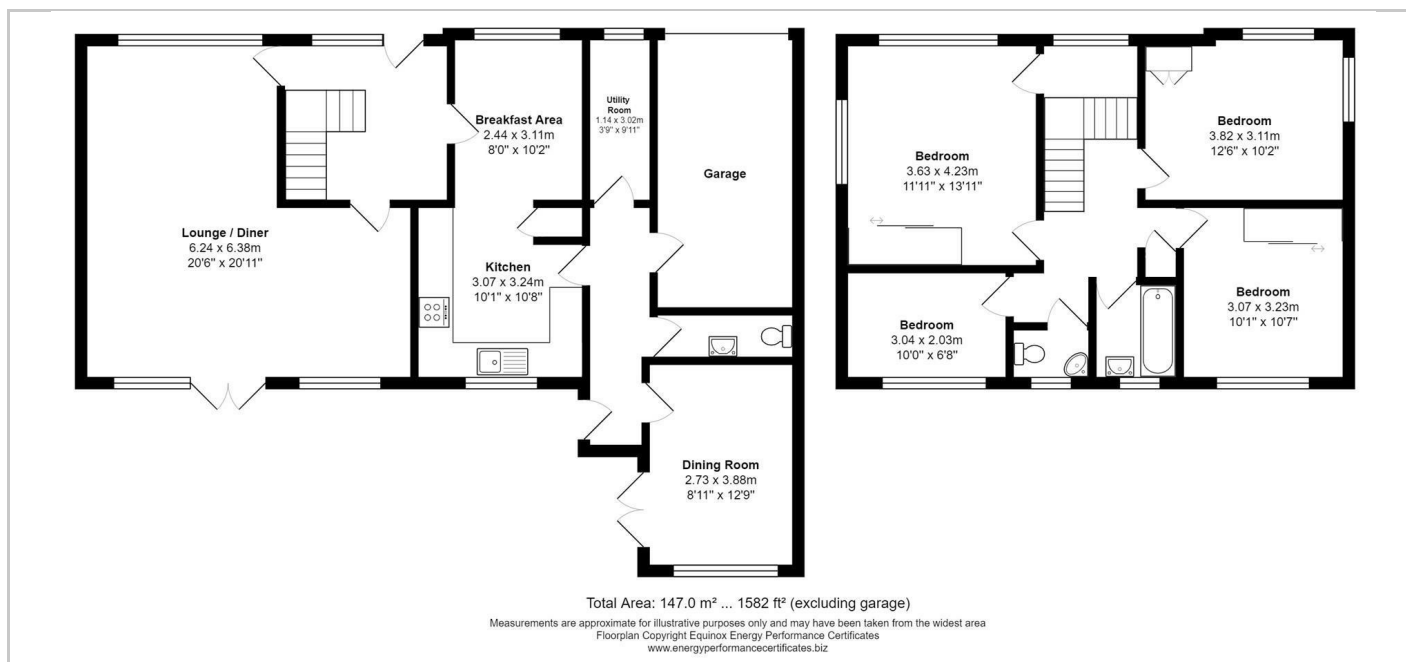
NOAHS



Woodlands Park, Leigh-On-Sea

£850,000

- Four Bedroom | Three Bathroom
- Large Front Drive | Large Rear Garden
- 1.4M to Leigh on Sea Station
- Freehold House | Garage
- Huge opportunity tot Extend and Modernise STPP



Directions

THE PROPERTY

A large detached four bedroom home occupying a well located plot in the heart of the Woodlands Park development very close to Belfairs Woods.

Entering through the front door there is a welcoming entrance hall, a very large front to back double aspect reception room, a large eat in kitchen, a separate utility room, and a good sized dining room. Upstairs are three large double bedrooms, and a fourth small bedroom that is a perfect nursery or work from home office.

This house has not been to market for over 40 years and would welcome a new owner to modernise it and bring it into the 21st century. Many of the houses in Woodlands Park have undergone substantial redevelopment with side, rear and loft extensions. Subject to Planning Permission this house could be extended into a five or six bedroom very impressive and imposing family home.

Noahs will be holding an open house on 15th January 2022. Please do call or email to register your interest and we will get you book in for a viewing!

SITUATION

The property is ideally placed for access to local amenities including woods, shops and schools whilst Leigh's bustling Broadway, the Old Town with its vibrant river frontage and Mainline Stations with C2C services to London are also within easy reach.