

Coniston Close Raynes Park, SW20 9NJ

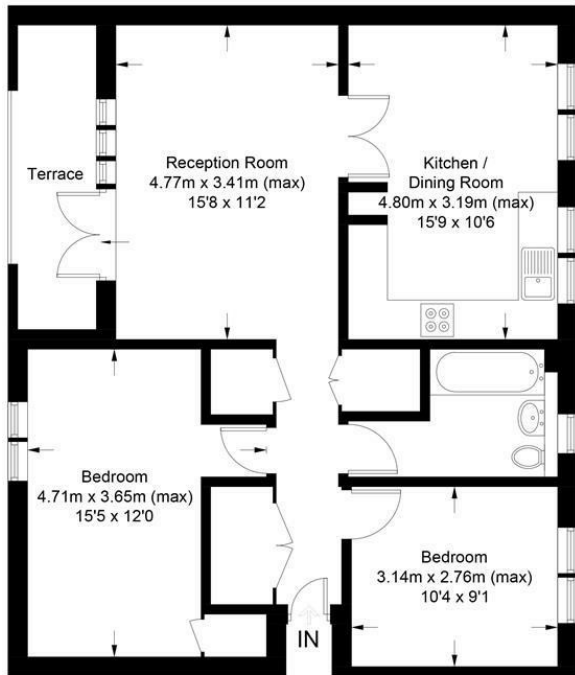
Offers In Excess Of £375,000 Leasehold



A well presented, two double bedroom apartment located in a highly sought after development. Being sold with no onward chain and a new lease, the property comprises of a spacious kitchen / diner and living space, two good sized bedrooms, ample storage, off street parking and a private balcony. This flat has a lovely, bright feel throughout and will be sought after by any buyers looking for a property that they can move straight into.

Coniston Close, SW20

Approximate Gross Internal Area = 71.4 sq m / 769 sq ft



(Not Shown In Actual Location / Orientation)



This floor plan is for representation purposes only and is not drawn to scale.
The Gross Internal Area includes outbuildings shown on the plan.
Whilst every attempt has been made to ensure the accuracy of the plan measurements of doors, windows and rooms are approximate only and should be checked before making any decisions reliant upon them.
Copyright Bespokeplans.co.uk (ID829311)

- Two Double Bedrooms
- Off Street Parking
- Well Presented Throughout
- No Onward Chain
- Sought After Location
- EPC Rating : C
- New Lease

Energy Efficiency Rating		Current	Potential
Very energy efficient - lower running costs			
(92 plus) A			
(81-91) B			
(69-80) C			
(55-68) D			
(39-54) E			
(21-38) F			
(1-20) G			
Not energy efficient - higher running costs			
England & Wales			
		EU Directive 2002/91/EC	

Environmental Impact (CO ₂) Rating		Current	Potential
Very environmentally friendly - lower CO ₂ emissions			
(92 plus) A			
(81-91) B			
(69-80) C			
(55-68) D			
(39-54) E			
(21-38) F			
(1-20) G			
Not environmentally friendly - higher CO ₂ emissions			
England & Wales			
		EU Directive 2002/91/EC	

For Free Mortgage Quote and Best Mortgage Rates, call Ellisons Mortgage Advisor on 0208 543 1166



Although these particulars are believed to be correct, their accuracy is not guaranteed and they do not form part of any contract.

Celebrating 30 years of successful Sales and Lettings in Merton

