



Leigham Vale, SW16
£1,150PCM

0208 702 9888
pedderproperty.com

pedder

In General

- One bedroom
- Top floor
- Period conversion
- Fitted Kitchen
- Modern bathroom
- Ideal location for transport and amenities
- Naturally decorated throughout
- Unfurnished

In Detail

Pedder are delighted to offer to let this bright and airy one bed top floor apartment on Leigham Vale, SW16.

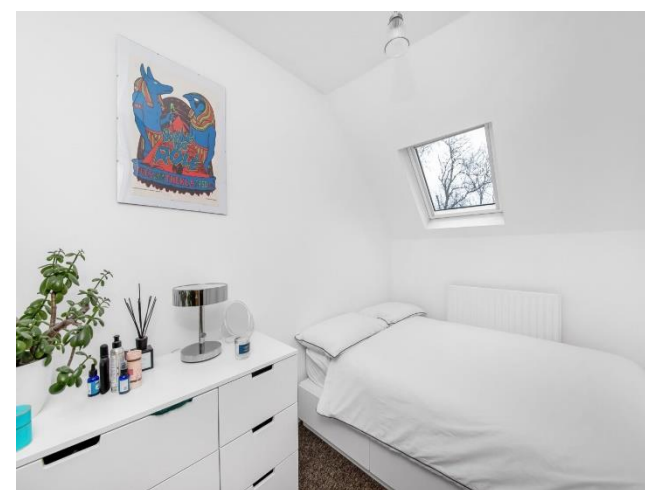
Situated on the top floor within a period property the apartment offers one bedroom, lounge, fitted kitchen and modern bathroom.

The apartment is ideally located between the transport hubs of Streatham Hill and Tulse Hill stations for access into The City and West End via London Victoria, London Bridge and Thameslink services.

As well as the large selection of bars, restaurants and shops of Streatham High Street, there are the nearby amenities of Norwood Road including the new library, Picture House Cinema and Leisure Centre as well as bus connections into Brixton, Herne Hill and Dulwich.

EPC: C | Council Tax Band: B | Availiable Early May

Score	Energy rating	Current	Potential
92+	A		
81-91	B		
69-80	C	72 C	75 C
55-68	D		
39-54	E		
21-38	F		
1-20	G		



Pedder Property Ltd trading as Pedder for themselves and for the vendor/landlord of this property whose agents they are, give notice that (1) these particulars do not constitute any part of an offer or contract, (2) all statements contained within these particulars are made without responsibility on the part of Pedder or the vendor/landlord, (3) whilst made in good faith, none of the statements contained within these particulars are to be relied upon as a statement of representation or fact, (4) any intending purchaser/tenant must satisfy him/herself by inspection or otherwise as to the correctness of each of the statements contained within these particulars, (5) the vendor/landlord does not make or give either Pedder or any person in their employment any authority to make or give representation or warranty whatsoever in relation to this property.

