

St. Marychurch Street, Rotherhithe

Asking Price £450,000 Leasehold

OLIVER *OJ* JAUQUES
EST.1986



St. Marychurch Street, Rotherhithe

At 531sqft, this spacious one bed apartment is located within Taylor Woodrow's Bombay Wharf warehouse-development. Tucked into the winding cobbled streets of Rotherhithe's historic village centre and moments from the Thames, the 'olde worde' pubs and historic parks, the locale retains its ancient charm but nowadays has the added benefit of having the Jubilee and London Overground Lines within a few minutes walk. Bombay Court sits in the middle of the development behind private entry gates and houses the development's concierge on the ground floor. This first floor unit enjoys double aspect, south and west facing windows, which fill the space with light. The semi open-plan living and kitchen areas offer a natural delineation of space, while the bedroom retains a cooler feel on the northern side. A riverside stroll from the bars and restaurants of Shad Thames, this well maintained property offers an entry level opportunity to experience warehouse living.

- One Double Bedroom
- Warehouse Development
- Secure Entry Phone System
- South West Facing Windows
- First Floor Apartment
- Concierge Service
- Historic Setting
- 3min Walk Rotherhithe Station

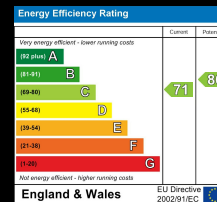
Oliver Jaques Surrey Quays
020 7231 5050

Email southeast@o-j.co.uk

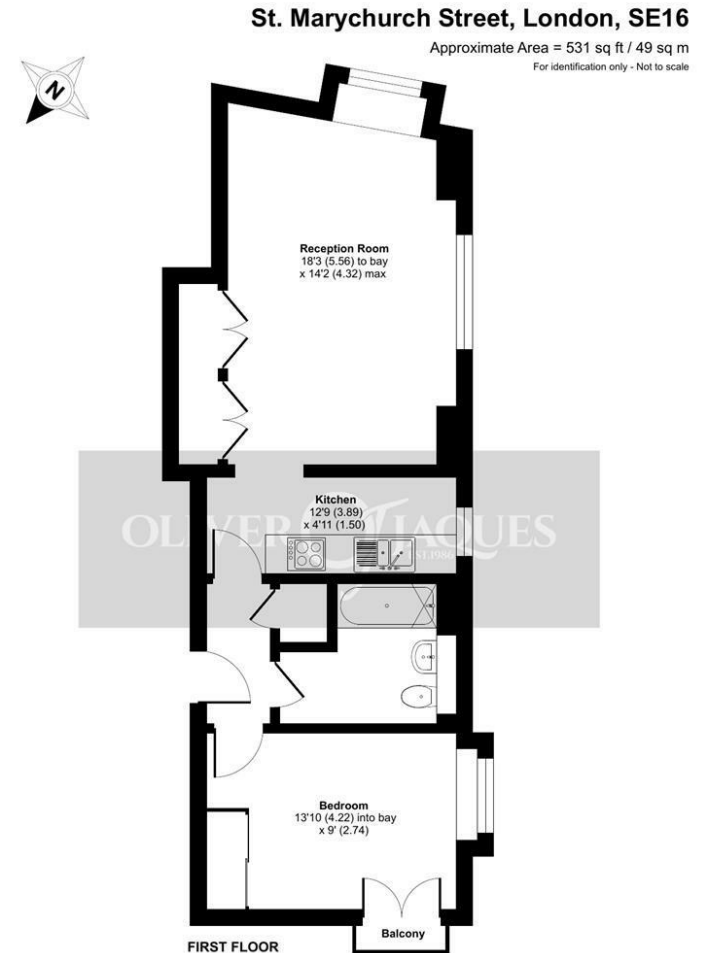
229/231 Lower Road, Surrey Quays, London, SE16 2LW

web www.o-j.co.uk

Every care has been taken with the preparation of this brochure but it is for general guidance only and complete accuracy cannot be guaranteed. If there is any point, which is of importance professional verification should be sought. This brochure does not constitute a contact or part of a contract. We are not qualified to verify tenure of property. Prospective purchasers should seek clarification from their solicitor or verify the tenure of this property for themselves by visiting www.gov.uk/government/organisations/land-registry. The mention of any appliances, fixtures or fittings does not imply they are in full working order. Photographs are reproduced for general information and it cannot be inferred that any item shown is included in the sale. All dimensions are approximate. Walking times are taken from Google Maps and measured from the centre of the postcode, which may differ from the individual property. We routinely refer clients to Chancery Mortgage Services Ltd. It is your decision whether you choose to deal with Chancery Mortgage Services Ltd. In making that decision, you should know that we receive an annual payment benefits from Chancery Mortgage



Floor plan produced in accordance with RICS Property Measurement Standards incorporating International Property Measurement Standards (IPMS2 Residential). © nchecom 2022. Produced for Oliver Jaques. REF: 875571



Tenure: Leasehold
- Reviewed

Ground Rent: £100 pa

Service Charge: £2,600 pa

Lease Expires: 3002

Shared Ownership: No

Council Tax Band: Southwark London Borough
Council (Band D)
£1,594.54 pa