



Anerley Road SE20
£750,000

0208 702 9333
pedderproperty.com





In general

- Period conversion
- Three double bedrooms
- Share of freehold
- Ample storage
- Convenient location
- Ideal for local amenities and transport links

In detail

A light, bright and characterful three bedroom period conversion, well placed for the transport links and amenities of Anerley and central Crystal Palace.

Forming part of an attractive Victorian building, the ground floor apartment boasts 1506 sq ft / 139.9 sq m of internal space and includes three double bedrooms, one with En suite shower room, two receptions rooms, eat in kitchen and upgraded family bathroom.

Features benefits include, Juliette balcony, direct access to communal garden, off street parking, ample storage, period features and a share of freehold.

This location is convenient for access to Anerley, Penge West and Birkbeck rail stations, also the beautiful Crystal Palace Park.

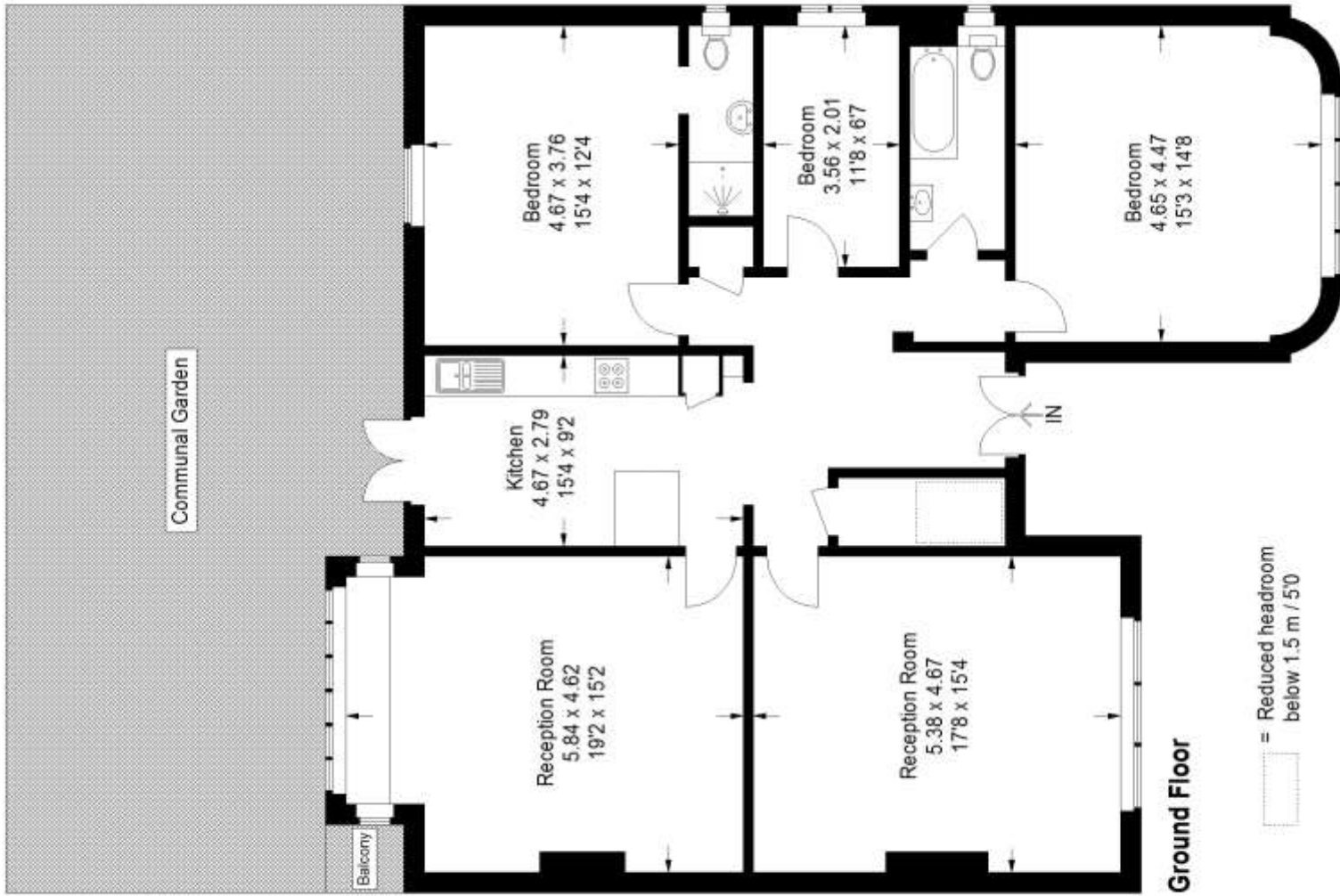
EPC: E | Council Tax Band: D | Lease: 999 years remaining | SC: N/A | GR: £600pa | BI: £614.93



Floorplan

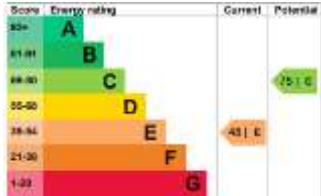
Anerley Road, SE20

Approximate Gross Internal Area
139.9 sq m / 1506 sq ft



Copyright www.pedderproperty.com © 2022

These plans are for representation purposes only as defined by RICS - Code of Measuring Practice. Not drawn to Scale. Windows and door openings are approximate. Please check all dimensions, shapes and compass bearings before making any decisions reliant upon them.



Pedder Property Ltd trading as Pedder for themselves and for the vendor/landlord of this property whose agents they are, give notice that (1) these particulars do not constitute any part of an offer or contract, (2) all statements contained within these particulars are made without responsibility on the part of Pedder or the vendor/landlord, (3) whilst made in good faith, none of the statements contained within these particulars are to be relied upon as a statement of representation or fact, (4) any intending purchaser/tenant must satisfy him/herself by inspection or otherwise as to the correctness of each of the statements contained within these particulars, (5) the vendor/landlord does not make or give either Pedder or any person in their employment any authority to make or give representation or warranty whatsoever in relation to this property.