

**ALLAN FULLER**  
— EST. 1983 —

149 Upper Richmond Road, Putney, London, SW15 2TX

t: 0208 788 8822

e: putney@allanfuller.co.uk

www.allanfuller.co.uk

## Schubert Road London, SW15

Simply breath-taking, three double bedroom apartment, set within this striking period building. Boasting a light and contemporary feel throughout, this exceptional home offers a substantial open-plan living space, luxury fitted kitchen, 3 double bedrooms with a choice of three modern bathrooms, one of which is en-suite. This outstanding home also has the added advantage of its own roof terrace, and has secure, off-street parking space.

Schubert Road is a quiet tree-lined residential road, enviously located just moments away from East Putney Underground Station with Putney High Street with all its fashionable shops, bars and restaurants just a short walk away, as too is the River Thames and Wandsworth Park.

Available part furnished from 3rd September - SORRY NO PETS



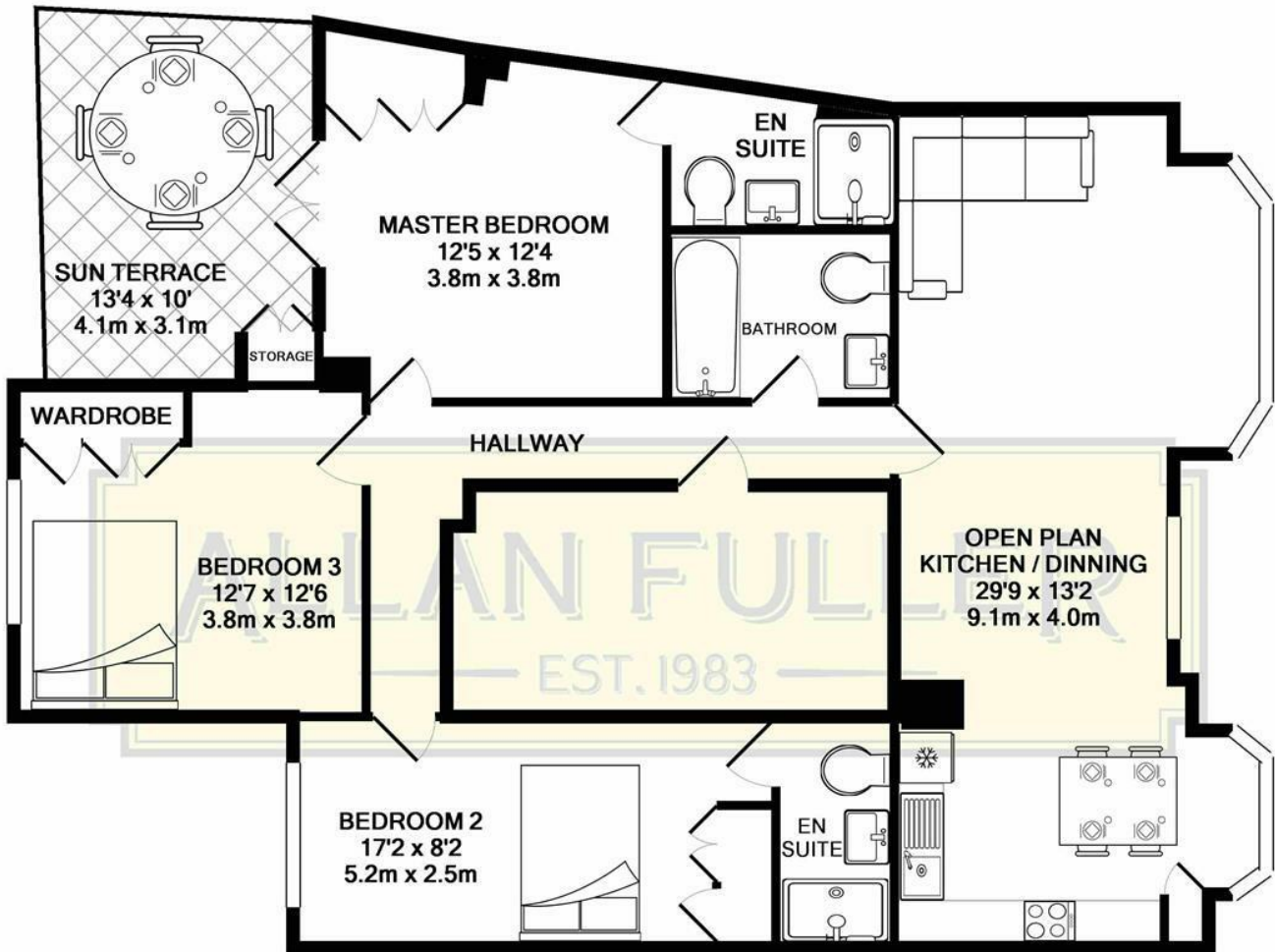
£2,950











TOTAL APPROX. FLOOR AREA 1097 SQ.FT. (101.9 SQ.M.)

Whilst every attempt has been made to ensure the accuracy of the floor plan contained here, measurements of doors, windows, rooms and any other items are approximate and no responsibility is taken for any error, omission, or mis-statement. This plan is for illustrative purposes only and should be used as such by any prospective purchaser. The services, systems and appliances shown have not been tested and no guarantee as to their operability or efficiency can be given  
 Made with Metropix ©2018



With regards to any information supplied by us in relation to lease, ground rent and service charge it is essential that you have this information checked by your solicitor. We have transmitted information supplied to us by the vendor of the property but we have not been able to inspect the lease to check its accuracy. Please note that we have not tested any of the equipment or utilities at this property, nothing in these particulars shall be deemed a statement that the property is in good condition or otherwise nor that any of the services or facilities are in good working order. Measurements are approximate they were taken with a sonic tape, are as accurate as possible and usually measured from the widest point of any room. Description provided herein represents the opinion of the author, is given in good faith but should not be constructed as statements of fact. The particulars and photograph are for guidance only.