

NOAHS



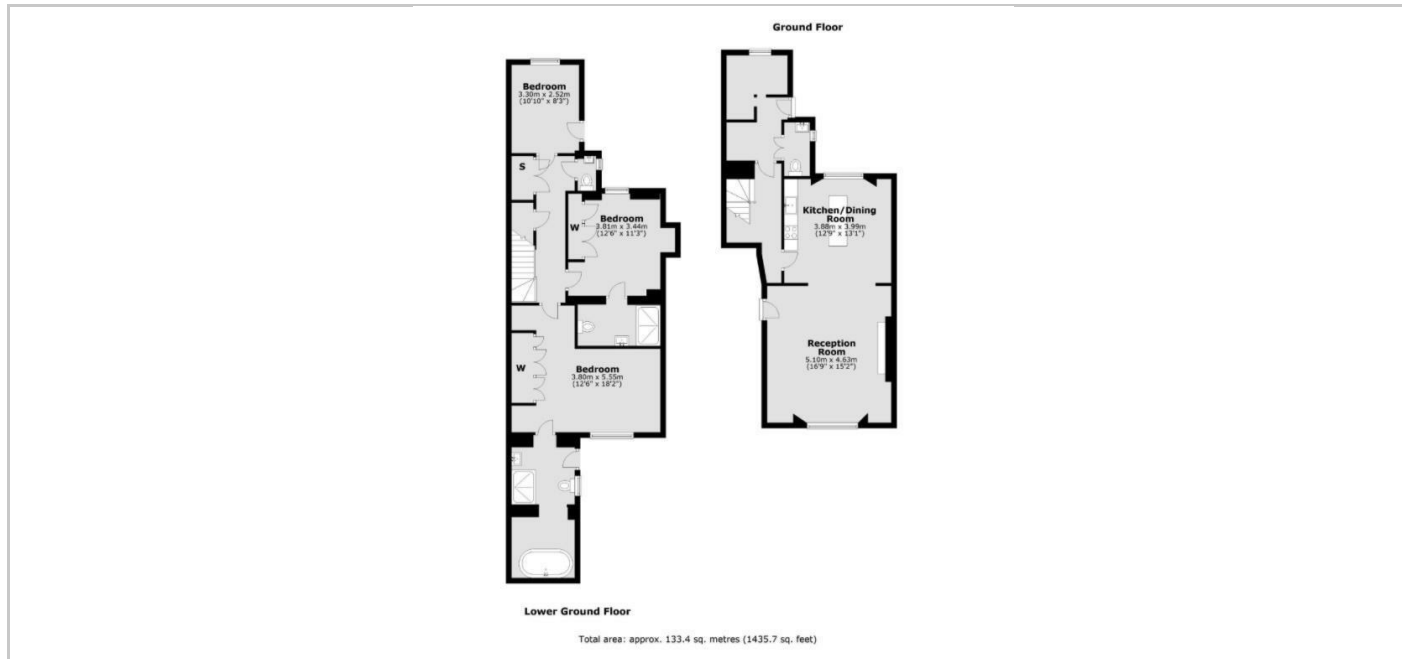
Lansdowne Crescent, London

£8,493 Per month

- Three Bedroom | Two Bathroom | Two Guest W/C
- Hard Wood Flooring Throughout | Beautiful Modern Design
- Available Furnished | EPC Rating D
- Available 15th June
- Split Level Maisonette | Period Conversion
- Communal Garden | Private Patio
- Very Large Open Plan Kitchen Reception Room

THE PROPERTY

A gorgeous three bedroom, four bathroom period conversion maisonette on one of the most sought after streets in Notting Hill with direct access to the communal gardens. This apartment beautifully combines traditional architecture with contemporary modern living. Entering in on the raised ground floor into a generous open plan kitchen reception room, following through to a lovely study over looking the communal gardens, then down stairs to the well proportioned three double bedrooms.



Directions

SITUATION

This home is set in the heart of Notting Hill and is within close proximity to the many local hotspots. Both Holland Park and Ladbroke Grove Underground stations are close by. [Central Line, Circle and Hammersmith & City lines].