



Prebend Mansions, London, W4 2LU

Guide Price £1,000,000

WHITMAN & CO.

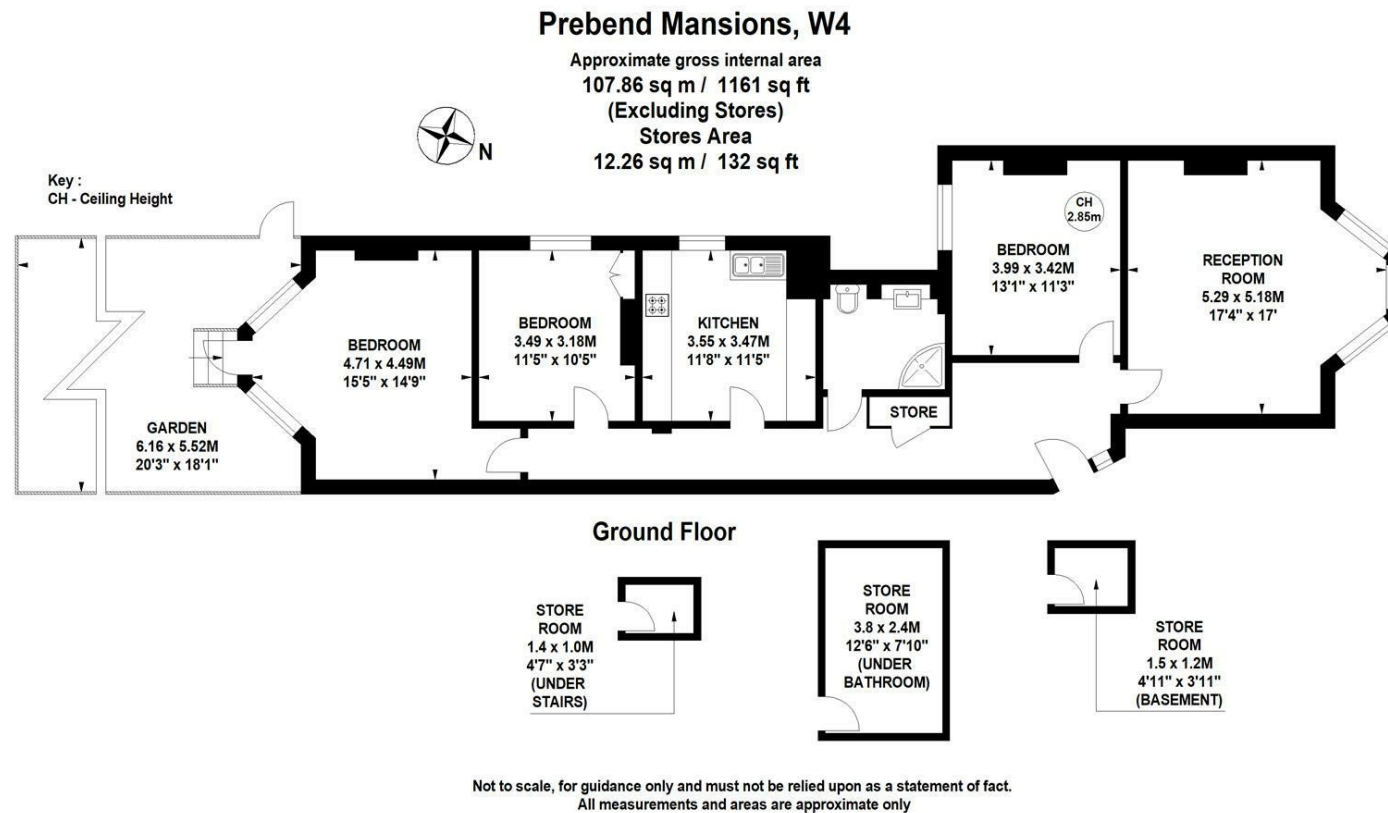
SALES · LETTINGS · COMMERCIAL

- Prestigious red brick mansion block
- Excellent proportions throughout
- Central location close to numerous amenities
- Rare garden flat with south facing garden
- Additional store rooms
- No chain

Tenure - Leasehold with share in the freehold
 Lease Length - 969 Years remaining
 Ground rent - £50 pa
 Service Charge - £6275 pa
 Local Authority - Hounslow
 Council Tax - Band F

THE PROPERTY

An incredibly rare opportunity to purchase one of just a handful of garden flats within this prestigious red brick mansion block. Occupying the premier position in the middle block with an open aspect south facing garden the property comprises a generous 17'4x17' reception room with bay window, master bedroom with door opening onto the garden, two further double bedrooms, kitchen/breakfast room, bathroom, private south facing garden, entrance hall, high ceilings and period features, three additional storage rooms. Prebend Mansions is in an excellent location within a short walk of numerous shops, cafes and restaurants. Transport links include Stamford Brook and Turnham Green stations, local bus routes and the A4/M4 for routes in and out of London. No chain.



SITUATION



5-7 Turnham Green Terrace, Chiswick, London, W4 1RG

Tel 020 8747 8800

E-mail sales@whitmanandco.com

Website www.whitmanandco.com