



149 Upper Richmond Road, Putney, London, SW15 2TX

t: 0208 788 8822

e: [putney@allanfuller.co.uk](mailto:putney@allanfuller.co.uk)

[www.allanfuller.co.uk](http://www.allanfuller.co.uk)

## Warwick Drive London, SW15

A fantastic, bright and spacious top floor apartment, offering excellent accommodation. Located within a well-maintained purpose-built block with lift service, this one bedroom flat offers 540 sq ft of accommodation with a dual aspect reception room with private balcony, modern kitchen, double bedroom with fitted wardrobes and shower room. The property also has an underground parking space, well-manicured grounds and access to the flats private roof garden offering panoramic views of London.

Located in a quiet but handy position just a short walk to Barnes station, with an array of local shops, restaurants and excellent bus links serving Putney, East Sheen, Barnes and Hammersmith, as well as the green open spaces of Barnes & Putney Commons and Richmond Park. EPC - D Council Tax - Band C



Offers In Excess Of £425,000  
Leasehold - Share of Freehold





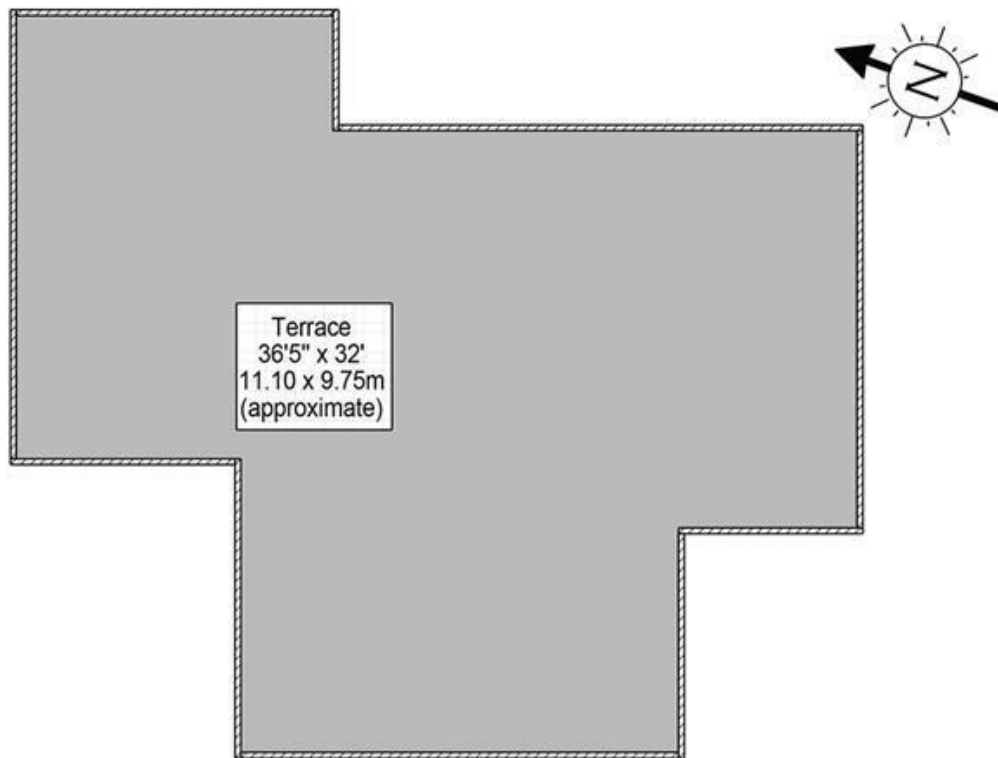




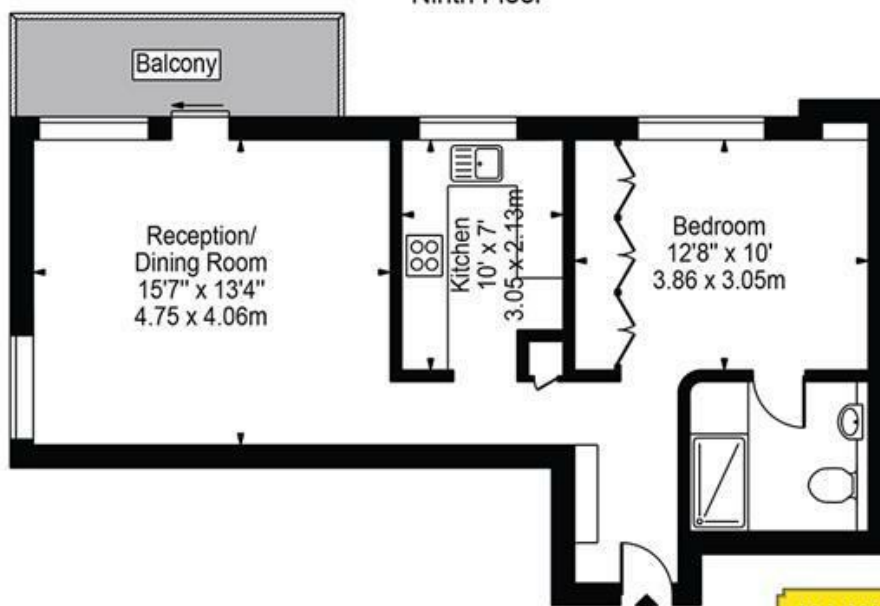


# March Court, SW15

Approx. Gross Internal Area 540 Sq Ft - 50.17 Sq M



Ninth Floor



Eighth Floor

ALLAN FULLER  
EST. 1983

©

For Illustration Purposes Only - Not To Scale Floor Plan by Mira Nikolova Photography

This floor plan should be used as a general outline for guidance only and does not constitute in whole or in part an offer or contract. Any intending purchaser or lessee should satisfy themselves by inspection, searches, enquiries and full survey as to the correctness of each statement. Any areas, measurements or distances quoted are approximate and should not be used to value a property or be the basis of any sale or let.

With regards to any information supplied by us in relation to lease, ground rent and service charge it is essential that you have this information checked by your solicitor. We have transmitted information supplied to us by the vendor of the property but we have not been able to inspect the lease to check its accuracy. Please note that we have not tested any of the equipment or utilities at this property, nothing in these particulars shall be deemed a statement that the property is in good condition or otherwise nor that any of the services or facilities are in good working order. Measurements are approximate they were taken with a sonic tape, are as accurate as possible and usually measured from the widest point of any room. Description provided herein represents the opinion of the author, is given in good faith but should not be constructed as statements of fact. The particulars and photograph are for guidance only.