

# West Kensington Court

West Kensington, London, W14







# West Kensington Court

West Kensington, London, W14

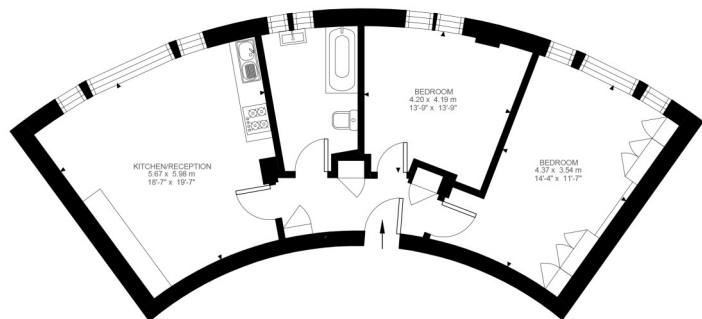
Price Guide: £375,000



A well presented two double bedroom flat located on the first floor (with Lift) of this well managed portered block close to West Kensington Underground Station (District Line).

This recently refurbished flat would make an ideal first time buy or rental investment, the accommodation comprises an open plan kitchen reception room, two double bedrooms and a bathroom. There is access to the communal gardens and bike shed. The Hot water & Central Heating are included in the service charge. The flat is being offered with a share of freehold coupled with a long lease. There is no forward chain and viewing is recommended.

West Kensington Court is located in Edith Villas, moments from West Kensington Underground Station, there are numerous shops, bars and restaurants within easy reach it is also located close to the M4 with access to Heathrow.



First Floor  
575 ft²

West Kensington Court, W14  
Approximate Gross Internal Area  
53.44 SQ.M / 575 SQ.FT

Illustration for identification purposes only. Not to scale.  
Floor Plan Drawn According To RICS Guidelines.

Two double bedrooms | Open plan kitchen reception room | First floor (with lift)  
Well managed portered block | Recently refurbished | Communal gardens and bike shed  
Close to West Kensington underground station | No forward chain  
Share of Freehold | 575 Sq. Ft (53.44 Sq. M)

All viewings by appointment through  
our **West Kensington Office:**

T: 020 7385 5020  
E: [westken@lawsonrutter.com](mailto:westken@lawsonrutter.com)

1 Barons Court Road, London  
W14 9DP  
[www.lawsonrutter.com](http://www.lawsonrutter.com)

In accordance with the Property Misdescription Act 1991, we wish to emphasise that the information given in these particulars is intended to help you decide whether you wish to view this property. Whilst every care is taken to ensure the accuracy of these particulars please note that all measurements are approximate and we are, for the accuracy of other information, reliant on what the seller has provided. We strongly recommend that you rely on your own inspections and those of your advisors to establish the details of any aspects which are of particular importance. Please note that we have not undertaken any survey of the property or the appliances within it and the buyer must rely on their own investigations prior to exchange of contracts.

