



Anerley Park, SE20
£1,450 pcm

0208 702 9333
pedderproperty.com





In general

- Two double bedrooms
- Modern kitchen and bathroom
- Close to transport links
- Maisonette / Private entrance
- Private garden
- Unfurnished
- Available from mid to late February

In detail

A ground floor two double bedroom garden flat which is well placed for multiple transport links in Anerley to rent.

The property comprises contemporary kitchen, separate living room, two double bedrooms and bathroom with shower above bath. Complete with private front garden, and private entrance.

Anerley Park, SE20 is ideally located near Penge West, Penge East, Anerley and Crystal Palace rail links, as well as the iconic Crystal Palace Park and shopping and leisure amenities such as Penge High Street and the Crystal Palace Triangle.

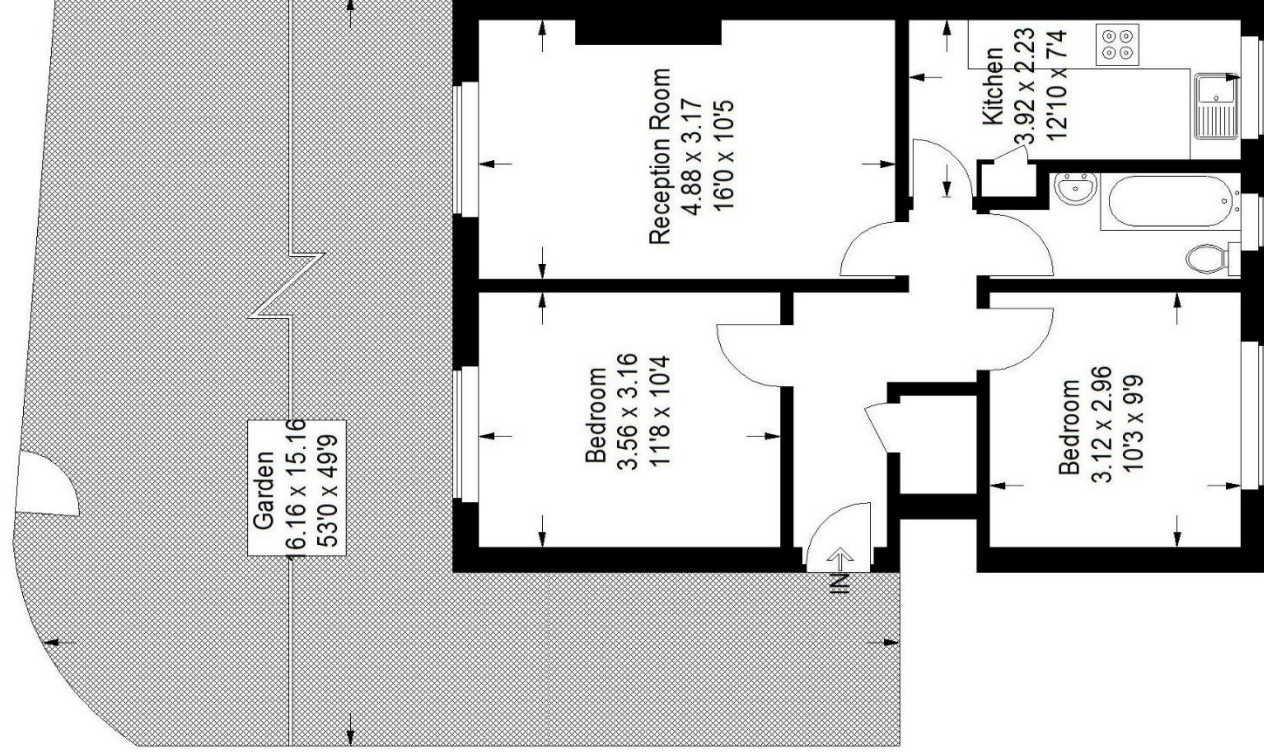
EPC: C | Council Tax: Bromley, band C | Offered unfurnished | Available from mid to late February | HD: £334.61 | SD: £1,673.07



Floorplan

Rosebank, SE20

Approximate Gross Internal Area
56.7 sq m / 610 sq ft



Ground Floor

Copyright www.pedderproperty.com © 2017

These plans are for representation purposes only as defined by RICS - Code of Measuring Practice. Not drawn to Scale. Windows and door openings are approximate. Please check all dimensions, shapes and compass bearings before making any decisions reliant upon them.