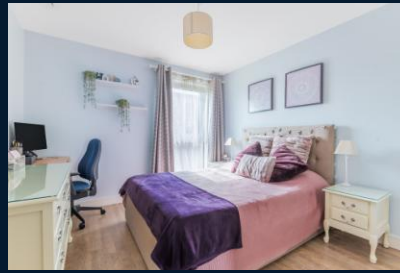


Yeoman Street, Surrey Quays

Asking Price £425,000 Leasehold

OLIVER  JACQUES
EST. 1986



Yeoman Street, Surrey Quays

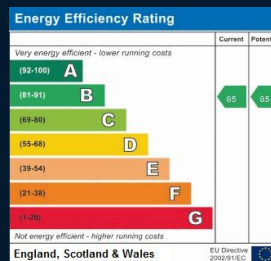
A 50.5sqm (544sqft) one bedroomed apartment forming part of Barratt Homes' flagship development; Greenland Place. Benefiting from its own 24hr concierge service, residents' gym and many public amenities that have taken up home within this popular development, Greenland Place is fast gaining a reputation as a stand-alone neighbourhood in its own right. Copenhagen Court sits at the heart of the complex and this particular unit enjoys a fourth floor elevation with a sunny west facing balcony. The interiors enjoys the high spec fittings associated with the development, while the sellers have added many decorative features giving the space a more homely feel than the often clinical feel "off the peg". Internally comprising a spacious double bedroom, bathroom with bath & shower cubicle and a naturally bright reception room laid to wood effect flooring, this property offers a peaceful retreat on the edge of Surrey Quays' central shopping district.

- One Double Bedroom
- Fourth Floor Elevation
- Separate Reception Room
- 24hr Concierge and Residents' Gym
- West Facing Balcony
- On Site Shopping Facilities

South East London
020 7231 5050

Email southeast@o-j.co.uk

229-231 Lower Road, London, SE16 2LW

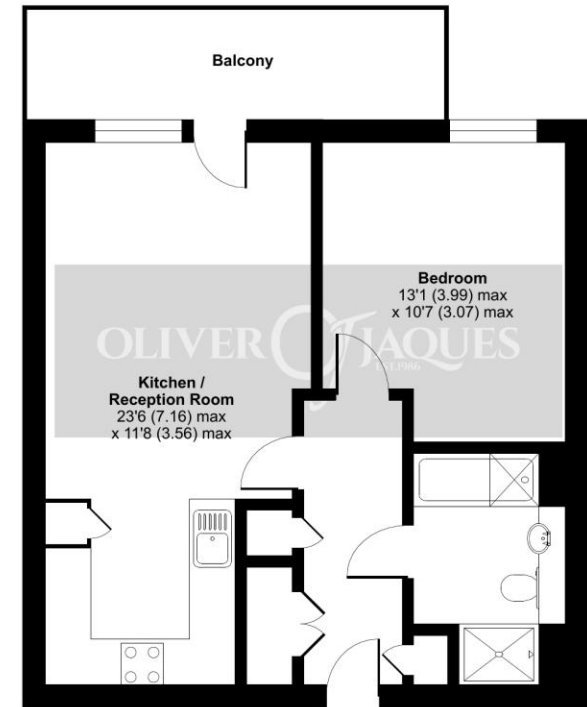


web www.o-j.co.uk

Every care has been taken with the preparation of this brochure but it is for general guidance only and complete accuracy cannot be guaranteed. If there is any point, which is of importance professional verification should be sought. This brochure does not constitute a contract or part of a contract. We are not qualified to verify tenure of property. Prospective purchasers should seek clarification from their solicitor or verify the tenure of this property for themselves by visiting www.gov.uk/government/organisations/land-registry. The mention of any appliances, fixtures or fittings does not imply they are in full working order. Photographs are reproduced for general information and it cannot be inferred that any item shown is included in the sale. All dimensions are approximate. Walking times are taken from Google Maps and measured from the centre of the postcode, which may differ from the individual property. We routinely refer clients to Chancery Mortgage Services Ltd. It is your decision whether you choose to deal with Chancery Mortgage Services Ltd. In making that decision, you should know that we receive an annual payment benefits from Chancery Mortgage Services Ltd, equating to approximately £220 per referral

Yeoman Street, London, SE8

Approximate Area = 544 sq ft / 50.5 sq m
For identification only - Not to scale



FOURTH FLOOR



Floor plan produced in accordance with RICS Property Measurement Standards incorporating International Property Measurement Standards (IPMS2 Residential). © nchecom 2022. Produced for Oliver Jacques. REF: 844109

- **Tenure:** Leasehold
- **Ground Rent:** £300 pa
- Reviewed
- **Service Charge:** £2,400 pa
- **Lease Expires:** 3012
- **Shared Ownership:** No
- **Council Tax Band:** Lewisham B
- £1,412.07