

Queens Close, Great Cornard, Sudbury, Suffolk, CO10 0HT

Offers in excess of: £150,000



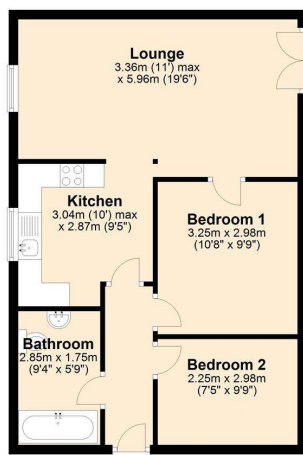
- First Floor Flat
- No Onward Chain
- Two Bedrooms
- Buy to Let Investment
- Viewing Advised
- Gas Radiator Heating
- Parking
- Lounge/Diner

PALMER & PARTNERS - A spacious and modern two bedroom first floor apartment offered to the market with no-onward chain and situated in Great Cornard. A carpeted entrance hallway leads to all of the rooms, the large lounge diner is dual aspect room with a juliet balcony, the modern kitchen includes an electric oven and hob, along with integrated fridge/freezer, and washing machine, the main bedroom is good sized double with carpeted flooring, the second bedroom is also carpeted, the bathroom is fitted with a white suite with half tiled walls and tiled flooring, the property also has parking available.

Great Cornard is situated a short distance from Sudbury's Town Centre, Sudbury lies on the Essex/Suffolk borders in the heart of the Stour Valley, with its busy market and famous water meadows. Sudbury offers a range of shopping and leisure facilities including galleries, a theatre, doctor's surgery and a branch line train station with links to London Liverpool Street.



Ground Floor



Disclaimer

Every attempt has been made to ensure accuracy, however these property particulars are approximate and for illustrative purposes only. They have been prepared in good faith and they are not intended to constitute part of an offer of contract. We have not carried out a structural survey and the services, appliances and specific fittings have not been tested. All photographs, measurements, floor plans and distances referred to are given as a guide only and should not be relied upon for the purchase of any fixture or fittings. Lease details, service charges and ground rent (where applicable) are given as a guide only and should be checked prior to agreeing a sale.

LEASE INFORMATION:

Lease - 109 years remaining

Service charge - £1,163 per annum

Ground rent - £150 per annum