



East Dulwich Road, SE22  
OIEO £375,000

0208 702 8222  
[pedderproperty.com](http://pedderproperty.com)

**pedder**





# In general

- One double bedroom
- Modern apartment
- Over 480 Sq Ft
- Lift-access
- Allocated off-street parking
- Communal gardens

# In detail

Bright and spacious one bedroom apartment in this desirable modern block ideally located in the heart of East Dulwich.

Built in 2005, Altima Court is a recognisable building on the junction of East Dulwich Road and Crystal Palace Road. It offers excellent transport links into The City and West End from Peckham Rye station (0.8 miles) and East Dulwich station (0.5 miles) as well as bus connections through the neighbouring New Cross, Camberwell and Dulwich Village. There are a host of independent shops, bars and restaurants on Bellenden Road and Lordship Lane as well as parks and green spaces such as Goose Green and Peckham Rye.

Located on the 2nd floor – the apartment enjoys over 480 Sq Ft of internal space including a beautifully bright 21-ft open-plan kitchen reception, a large double bedroom with built-in storage and a modern family bathroom.

The property further benefits from lift-access, communal gardens, allocated off-street parking and secure bike storage.

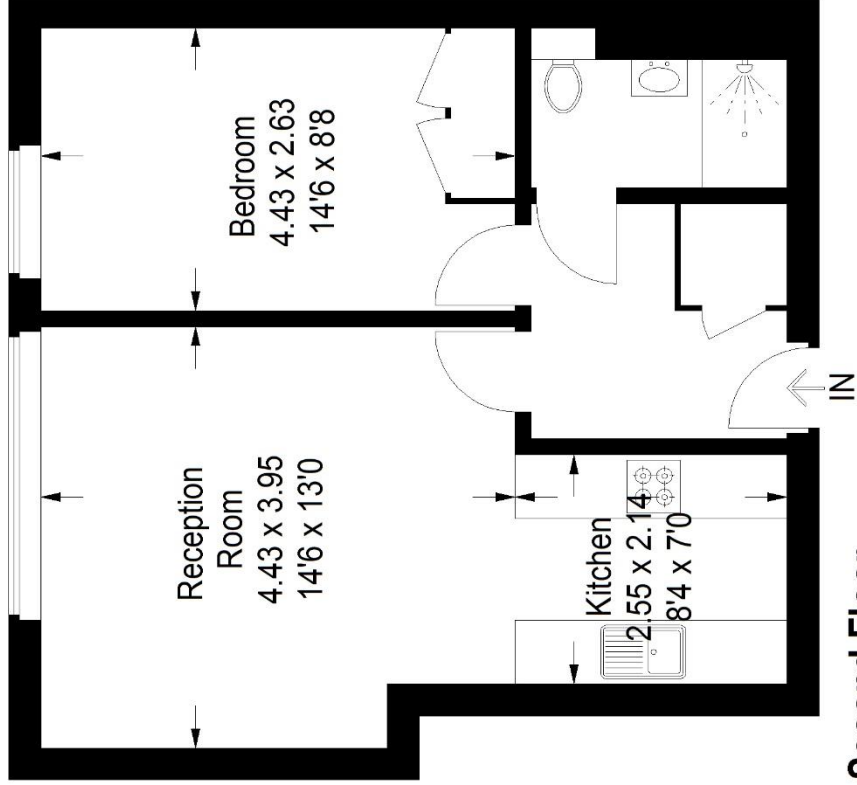
EPC: TBC | Council Tax Band: C | Lease: 132 years remaining | SC: £1,600 pa | GR: £200 pa | Buildings Insurance: Under lease provision





# Floorplan

**Altima Court, SE22**  
Approximate Gross Internal Area  
45.2 sq m / 487 sq ft



## Second Floor

Copyright www.pedderproperty.com © 2022  
These plans are for representation purposes only  
as defined by RICS - Code of Measuring Practice.  
Not drawn to Scale. Windows and door openings  
are approximate. Please check all dimensions,  
shapes and compass bearings before making  
any decisions reliant upon them.

Pedder Property Ltd trading as Pedder for themselves and for the vendor/landlord of this property whose agents they are, give notice that (1) these particulars do not constitute any part of an offer or contract, (2) all statements contained within these particulars are made without responsibility on the part of Pedder or the vendor/landlord, (3) whilst made in good faith, none of the statements contained within these particulars are to be relied upon as a statement of representation or fact, (4) any intending purchaser/tenant must satisfy him/herself by inspection or otherwise as to the correctness of each of the statements contained within these particulars, (5) the vendor/landlord does not make or give either Pedder or any person in their employment any authority to make or give representation or warranty whatsoever in relation to this property.