



Leigham Court Road SW16
OIEO £325,000

0208 702 9888
pedderproperty.com

pedder



In general

- Period conversion
- Bright and Airy
- Boasting over 687 Sq Ft of internal space
- Fitted kitchen
- Modern bathroom
- EPC D
- Communal Garden

In detail

Pedder are delighted to offer this spacious and charming one bedroom period conversion in this striking building ideally located on the popular Leigham Court Road.

Lovingly maintained by the current owner, the first-floor apartment boasting over 687 Sq Ft of internal space with a 15x14 ft reception room, separate fitted kitchen, a large double bedroom and modern bathroom.

Situated on Leigham Court Road, the property is near the wide open spaces of Streatham Common and Tooting Bec Common and is well situated for the amenities of Streatham High Road. The property is also well located for access to Streatham Hill, West Norwood and Tulse Hill Stations, which offer regular services to London Victoria, Blackfriars, London Bridge and Clapham Junction.

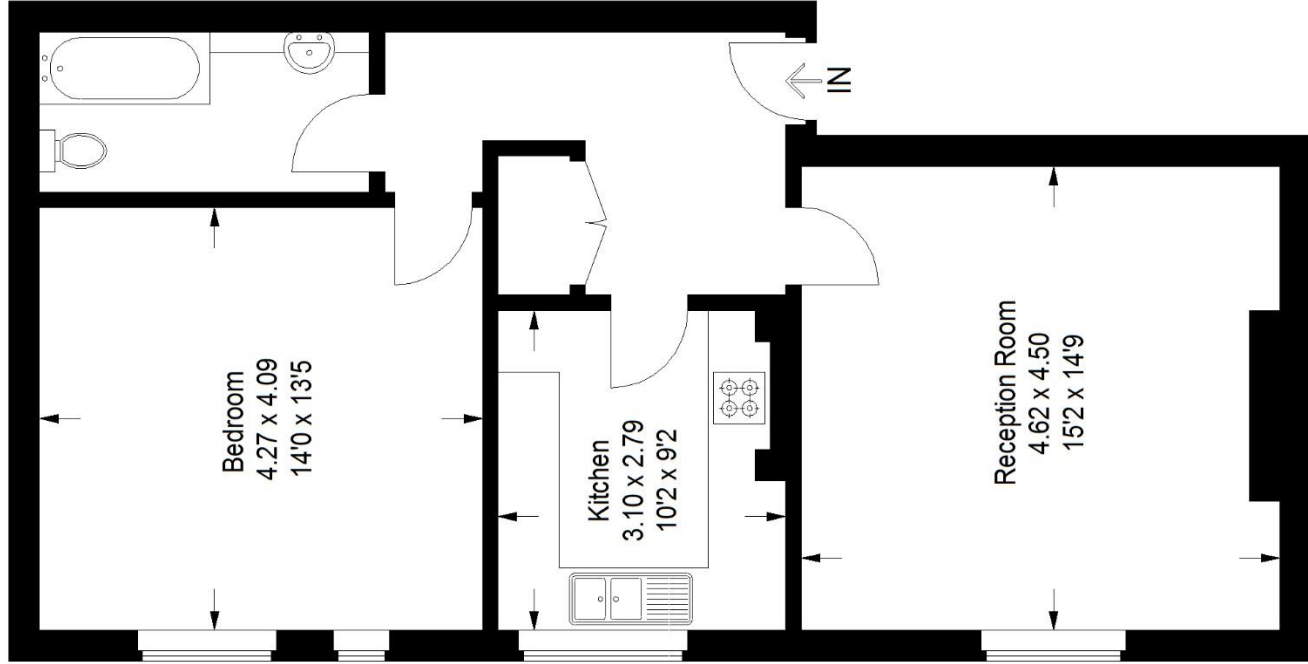
EPC: D



Floorplan

Leigham Court, SW16

Approximate Gross Internal Area
63.8 sq m / 687 sq ft



First Floor

Copyright www.pedderproperty.com © 2021
These plans are for representation purposes only
as defined by RICS - Code of Measuring Practice.
Not drawn to Scale. Windows and door openings
are approximate. Please check all dimensions,
shapes and compass bearings before making any
decisions reliant upon them.

Score	Energy rating	Current	Potential
92+	A		
81-91	B		
69-80	C		80 C
55-68	D	58 D	
39-54	E		
21-38	F		
1-20	G		

Pedder Property Ltd trading as Pedder for themselves and for the vendor/landlord of this property whose agents they are, give notice that (1) these particulars do not constitute any part of an offer or contract, (2) all statements contained within these particulars are made without responsibility on the part of Pedder or the vendor/landlord, (3) whilst made in good faith, none of the statements contained within these particulars are to be relied upon as a statement of representation or fact, (4) any intending purchaser/tenant must satisfy him/herself by inspection or otherwise as to the correctness of each of the statements contained within these particulars, (5) the vendor/landlord does not make or give either Pedder or any person in their employment any authority to make or give representation or warranty whatsoever in relation to this property.