

WAYNE & SILVER



53 Britten Close

, Hampstead Garden Suburb, NW11 7HQ

Guide Price £500,000

Offered for sale is this rarely available raised ground floor apartment with secure underground parking and private outside space.

The property comprises of a spacious reception room leading out to a private terrace, Master bedroom with en-suite shower room, 2nd large bedroom with access to a sunny balcony, family bathroom, fully fitted kitchen.

Further benefits include hard wood flooring to the hallway and reception room, built in cupboards in both bedrooms, secure gated underground parking space, further permit parking in the development for two cars, good condition throughout.

Leasehold

The property is conveniently located in a desirable location just moments from Hampstead Heath Extension and the many shops, restaurants, cafes and transport links of Golders Green bus and underground station.

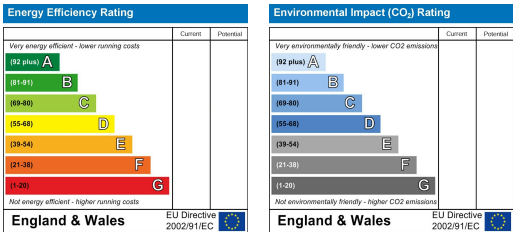
Viewing

Please contact our Hampstead Sales Office on 020 7431 4488 if you wish to arrange a viewing appointment for this property or require further information.

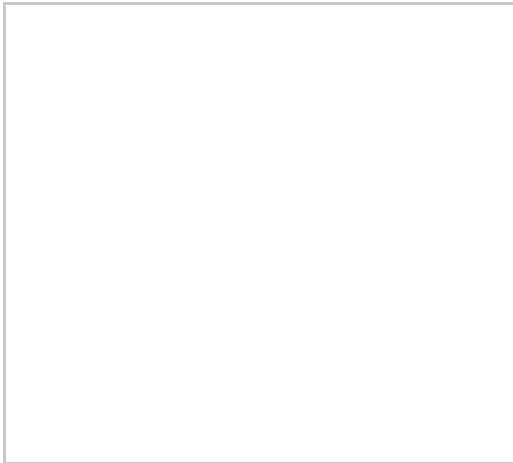




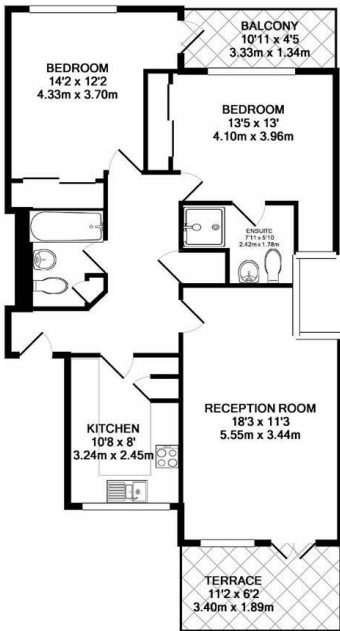
Energy Efficiency Graph



Area Map



Floor Plan



BRITTEN CLOSE NW11
RAISED GROUND FLOOR
TOTAL APPROX. FLOOR AREA 850 SQ. FT. (79.0 SQ. M.)

Floorplans are for identification and guideline purposes only, not to scale. Compliant with RICS code of measuring practice Floor plan supplied by CMA Chak Limited. Made with Mapogen 020779

These particulars, whilst believed to be accurate are set out as a general outline only for guidance and do not constitute any part of an offer or contract. Intending purchasers should not rely on them as statements of representation of fact, but must satisfy themselves by inspection or otherwise as to their accuracy. No person in this firms employment has the authority to make or give any representation or warranty in respect of the property.