



High View Road SE19
£1,450,000

0208 702 9333
[pedderproperty.com](https://www.pedderproperty.com)

pedder



In general

- Detached house
- Five double bedrooms
- Upgraded to a high standard throughout
- Contemporary kitchen and bathroom
- Beautiful period features
- 2778 sq ft / 258.1sq m
- Nearby popular Rockmount Primary
- Highly regarded road
- Landscapes rear garden
- Conservatory

In detail

An exceptional and rarely available five bedroom Victorian double-fronted detached family house positioned on a highly regarded road moments from the ever-popular Rockmount Primary School.

Upgraded, remodelled and finished to an exacting standard by the current owners, this light, bright and well proportioned accommodation (2778 sq ft / 258.1sq m) & is arranged over three levels and offers a superb blend of period detail and contemporary design.

Noteworthy features include a beautifully finished kitchen with a breakfast bar, solid herringbone and stripped wood flooring, stunning fireplaces with marble surround and exquisite period detail, cast iron radiators, high ceilings, a newly fitted family bathroom with marble effect tiling, stylish fittings and double vanity, a downstairs shower room, a handy utility room, and a year-round conservatory with floor to ceiling glass. The overall flow of the living space could not be better, including a sociable open dining room to the kitchen and a third reception room / study.

Externally there is off street parking and a 225 sq ft storage space to the side of the house which has potential for a new owner to develop to suit. The rear garden has been professionally landscaped to offer a decked area, a flat lawned space, and lots of planting & an enviable retreat in summer months.

This location is a quiet residential area of sizeable period properties (albeit this one of the largest) and offers ease of access to central Crystal Palace, excellent bus and rail links, and parkland

Certainly a must see house!.

EPC: TBC



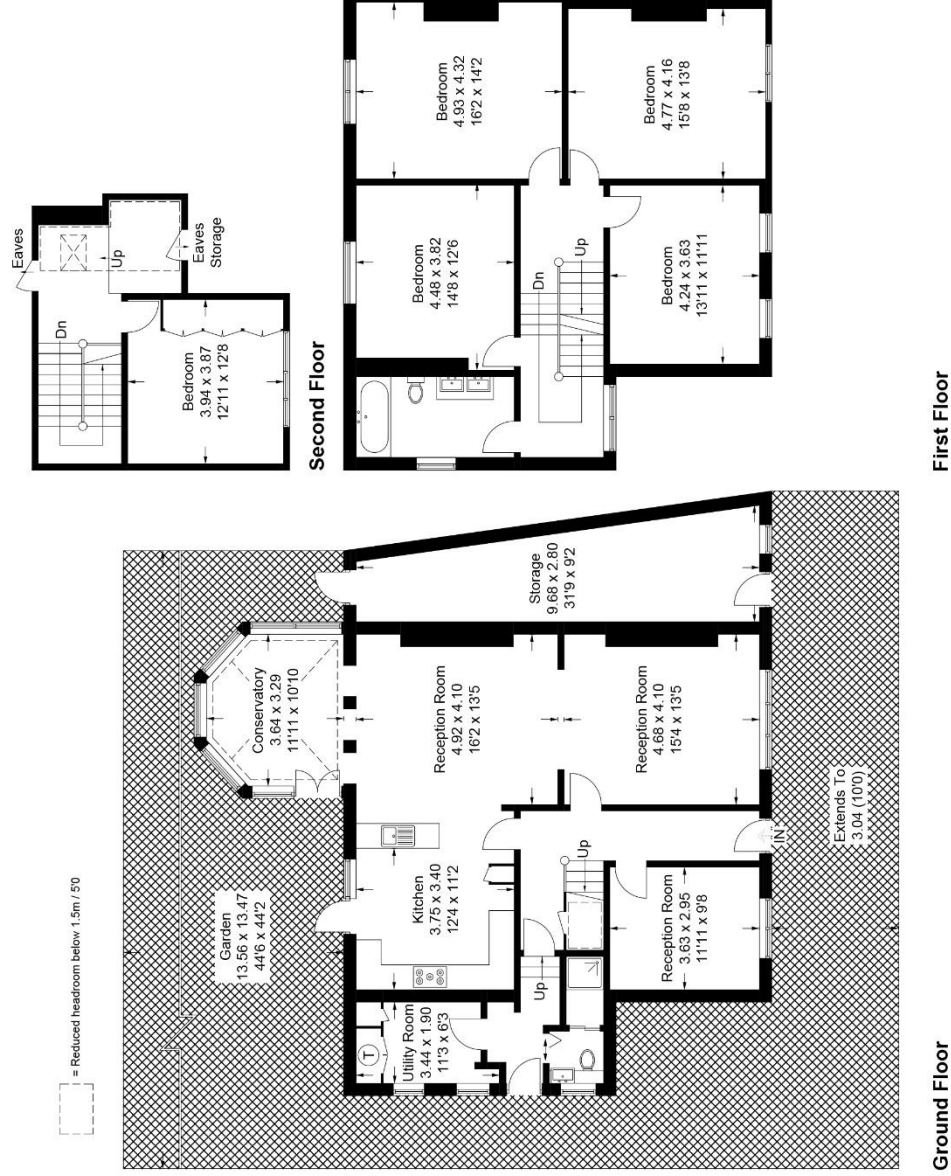
Floorplan

Highview Road, SE19

Approximate Gross Internal Area = 237.2 sq m / 2553 sq ft

Storage = 20.9 sq m / 225 sq ft

Total = 258.1 sq m / 2778 sq ft



Pedder Property Ltd trading as Pedder for themselves and for the vendor/landlord of this property whose agents they are, give notice that (1) these particulars do not constitute any part of an offer or contract, (2) all statements contained within these particulars are made without responsibility on the part of Pedder or the vendor/landlord, (3) whilst made in good faith, none of the statements contained within these particulars are to be relied upon as a statement of representation or fact, (4) any intending purchaser/tenant must satisfy him/herself by inspection or otherwise as to the correctness of each of the statements contained within these particulars, (5) the vendor/landlord does not make or give either Pedder or any person in their employment any authority to make or give representation or warranty whatsoever in relation to this property.

Copyright www.pedderproperty.com © 2019
 These plans are for representation purposes only as defined by RICS - Code of Measuring Practice.
 Not drawn to Scale. Windows and door openings are approximate. Please check all dimensions, shapes and compass bearings before making any decisions reliant upon them.