



Havelock Walk SE23  
OIEO £1,750,000

0208 702 9444  
[pedderproperty.com](http://pedderproperty.com)

**pedder**







# In general

- Video tour available
- Set over 4,200 Sq ft
- A wonderful roof garden
- Amazing views
- Excellent location
- Built in 1860
- Incredible unique space
- Moments from Forest Hill station
- Offered chain free

# In detail

A unique and an incredible opportunity to purchase an amazing property in the artistic and creative community on Havelock Walk just moments from Forest Hill station.

This astonishing home covers approximately 4,213 sq ft and is currently owned by artist and sculptor David Mach. The property offers a 2,117 sq ft artist studio space on the ground floor and a two bedroom apartment on the first floor with spiral staircase leading directly to a huge and wonderful roof terrace with amazing views. Further benefits include a spacious bathroom suite, balcony, unique working fire place designed by the artist, a soundproof studio and so much more.

Located just moments away from Forest Hill station the property offers excellent links into London Bridge, Canada Water, Shoreditch, Whitechapel, Highbury & Islington and many other locations. It is also just a short walk to various local amenities including a variety of restaurants, gastro pubs, coffee shops, cafes and the incredibly popular Horniman Museum & Gardens. Offered Chain Free. EPC:D.

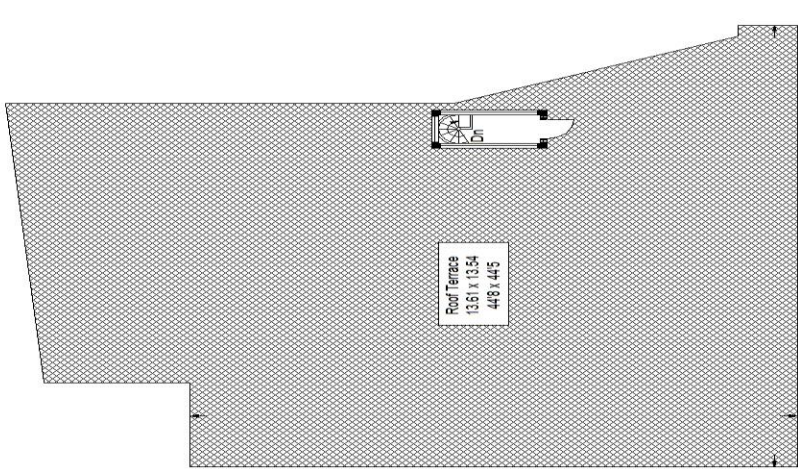
Viewings are highly recommended. Call the Pedder forest Hill sales team to arrange a viewing today.



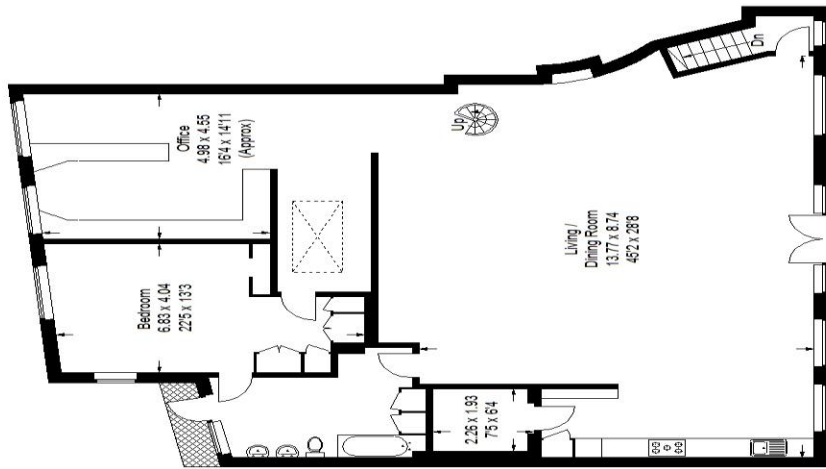
# Floorplan

## Havelock Walk, SE23

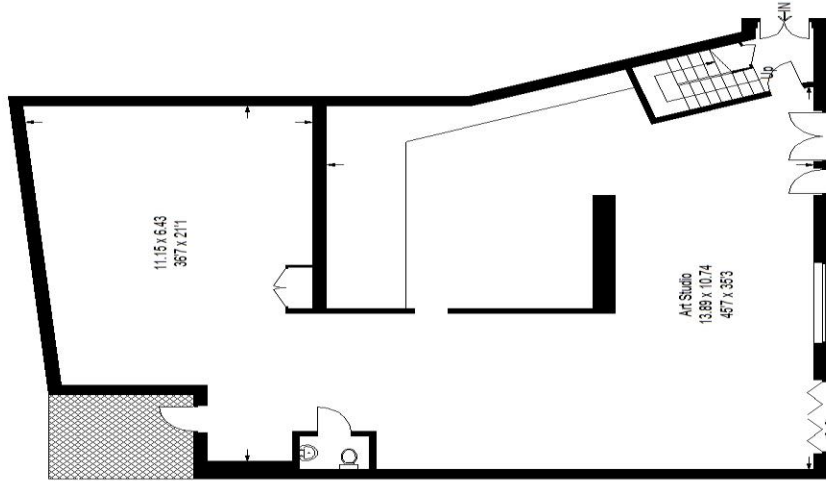
Approximate Gross Internal Area  
(Excluding Roof Terrace)  
Ground Floor = 196.7 sq m / 2117 sq ft  
First Floor = 194.7 sq m / 2096 sq ft  
Total = 391.4 sq m / 4213 sq ft



Roof Terrace

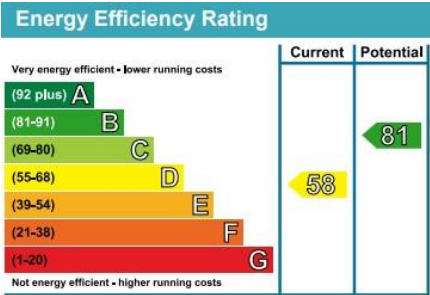


First Floor



Ground Floor

Copyright www.pedderproperty.com © 2020  
These plans are for representation purposes only as defined by RICS - Code of Measuring Practice.  
Not drawn to Scale. Windows and door openings are approximate. Please check all dimensions, shapes and compass bearings before making any decisions reliant upon them.



Pedder Property Ltd trading as Pedder for themselves and for the vendor/landlord of this property whose agents they are, give notice that (1) these particulars do not constitute any part of an offer or contract, (2) all statements contained within these particulars are made without responsibility on the part of Pedder or the vendor/landlord, (3) whilst made in good faith, none of the statements contained within these particulars are to be relied upon as a statement of representation or fact, (4) any intending purchaser/tenant must satisfy him/herself by inspection or otherwise as to the correctness of each of the statements contained within these particulars, (5) the vendor/landlord does not make or give either Pedder or any person in their employment any authority to make or give representation or warranty whatsoever in relation to this property.