



Chiswick Village, London, W4 3DF

£375,000

WHITMAN & CO.

SALES · LETTINGS · COMMERCIAL

- Two bedroom flat
- Bay fronted reception room
- Catchment for two outstanding schools
- First floor with lift access
- Extensive gated communal gardens
- Close to tube, rail and high road

Tenure - Leasehold with a share in the freehold
 Lease length - 960
 Ground rent - Peppercorn
 Service Charge - approx. £4000 pa
 Local authority - Hounslow
 Council tax - Band C

THE PROPERTY

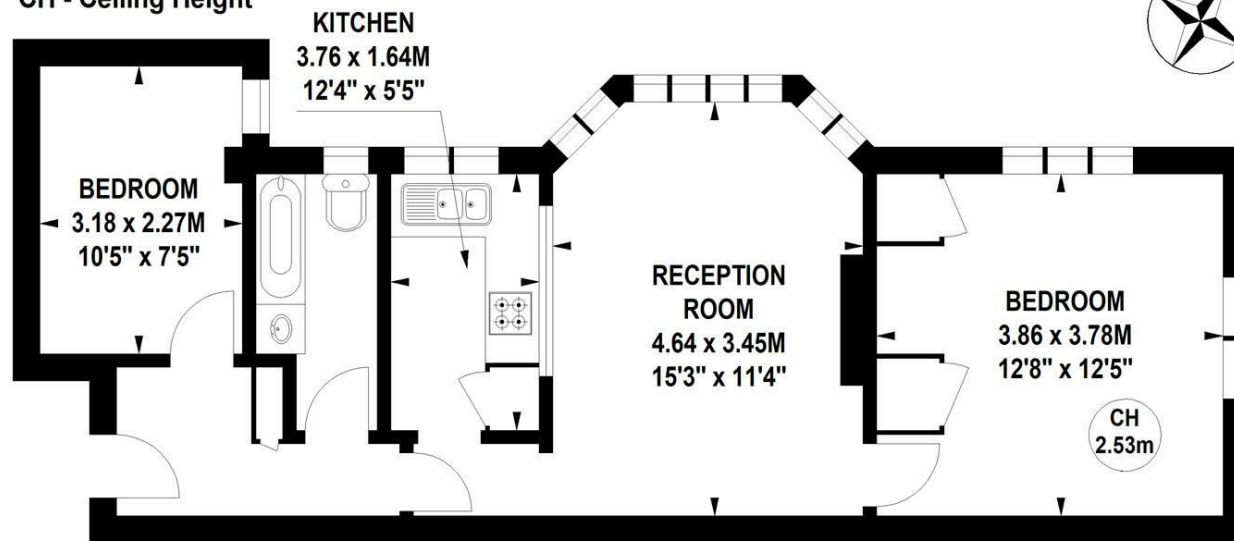
A well presented two bedroom first floor apartment located within this popular art deco 1930's mansion block with extensive gated communal gardens and close proximity to numerous amenities. This spacious two double bedrooms comprises a white bathroom suite, 15' reception room, fitted kitchen, extensive built in storage, automatic lift, long lease with a share of freehold and the added benefit of communal hot water and central heating. Close proximity to Gunnersbury (district and overground) station, numerous bus routes and extensive shops, bars and restaurants on Chiswick High Road.

Chiswick Village, W4

Approximate gross internal area

53.23 sq m / 573 sq ft

Key :
CH - Ceiling Height



First Floor

Not to scale, for guidance only and must not be relied upon as a statement of fact.
 All measurements and areas are approximate only

SITUATION



5-7 Turnham Green Terrace, Chiswick, London, W4 1RG

Tel 020 8747 8800

E-mail sales@whitmanandco.com

Website www.whitmanandco.com