

Greyhound Road

Hammersmith, London, W6





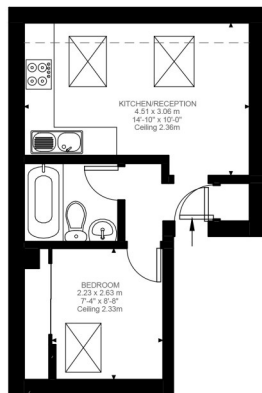
Greyhound Road

Hammersmith, London, W6

Price Guide: £275,000

A well-presented top floor one-bedroom period conversion, ideal for a first-time buyer or as a buy to let investment. The property boasts a light open plan reception room, a white bathroom suite and a good size bedroom with a large built in wardrobe.

This chain free property is located within a 10 minute walk from Hammersmith and Barons Court underground stations and a short walk to the River Thames towpath and all the local bars shops and restaurants. An early viewing is highly recommended.



Third Floor
288 ft²

Greyhound Road, W6
Approximate Gross Internal Area
26.72 SQ.M / 288 SQ.FT

All viewings by appointment
through our **Hammersmith Office:**

T: 020 7385 7000
E: hammersmith@lawsonrutter.com

192 Fulham Palace Road, London
W6 9PA

Well presented top floor one bedroom apartment

Popular location | Light, open plan reception room | good size bedroom with built in wardrobe

Ideal first time buy/investment | Short walk to River Thames towpath

Close to transport & amenities | 288 Sq. Ft. (26.72 Sq. M.) Leasehold

In accordance with the Property Misdescription Act 1991, we wish to emphasise that the information given in these particulars is intended to help you decide whether you wish to view this property. Whilst every care is taken to ensure the accuracy of these particulars please note that all measurements are approximate and we are, for the accuracy of other information, reliant on what the seller has provided. We strongly recommend that you rely on your own inspections and those of your advisors to establish the details of any aspects which are of particular importance. Please note that we have not undertaken any survey of the property or the appliances within it and the buyer must rely on their own investigations prior to exchange of contracts.



Illustration for identification purposes only. Not to scale.
Floor Plan Drawn According To RICS Guidelines.

