

## Florence Road Wimbledon, SW19 8TN

**Offers In Excess Of £1,050,000 Freehold**



**A stunning three bedroom, two bathroom fully extended Victorian family home in excellent condition throughout situated in the highly sought after South Park Gardens area of Wimbledon, with a beautiful south facing garden and stunning office room. On the ground floor there is a bright and spacious through lounge with wood flooring throughout and original fireplaces, whilst there is also a fantastic eat-in kitchen with doors opening onto the garden. On the first floor there are two double bedrooms and family bathroom whilst the master bedroom with en-suite is located in the loft extension. As properties in this area are highly sought after an early viewing is highly recommended.**

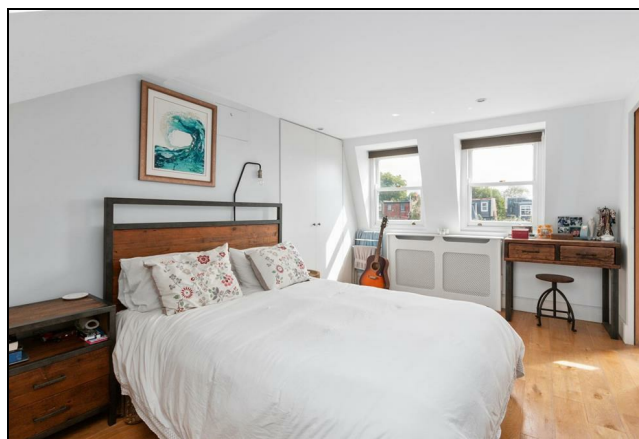
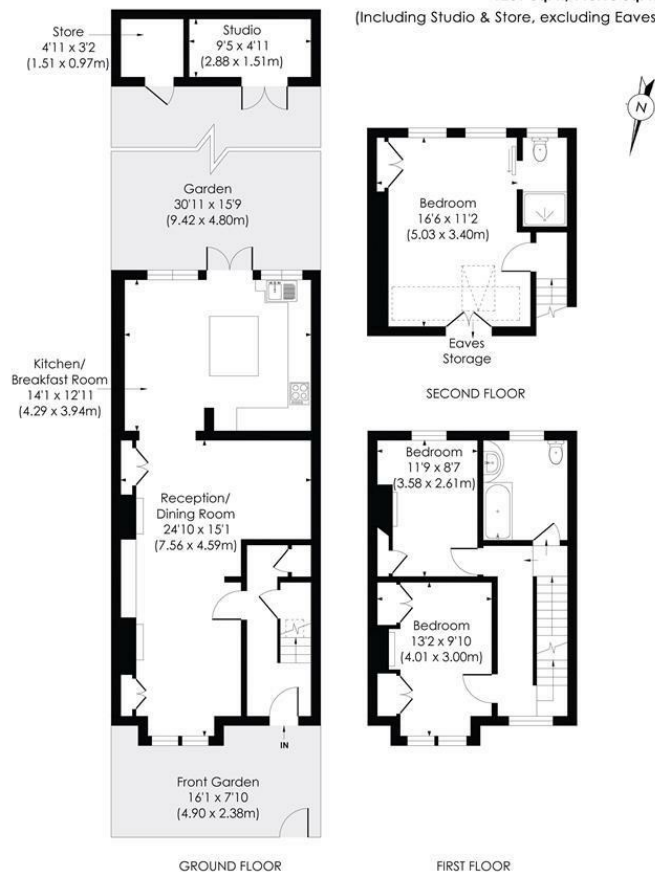


## FLORENCE ROAD, SW19

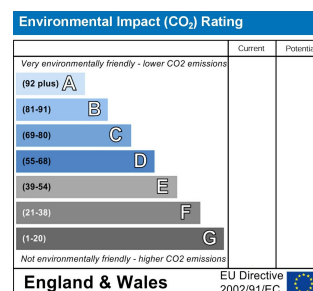
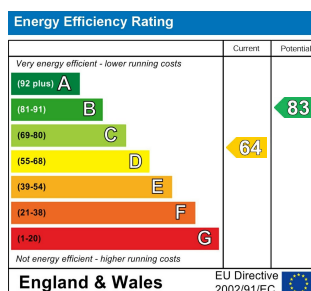
Approx. Gross Internal Floor Area

**1239 Sq. ft/115.13 Sq. m**

(Including Studio & Store, excluding Eaves)



- South Park Gardens Location
- Victorian Terraced House
- South Facing Garden
- Garden Room/Office/Studio
- Three Double Bedrooms
- Two Bathrooms
- Highly Sought After Local Schools
- Excellent Transport Links
- Council Tax Band F - EPC Rating D



**For Free Mortgage Quote and Best Mortgage Rates, call an Ellisons Mortgage Advisor on 020 8944 9494**



Although these particulars are believed to be correct, their accuracy is not guaranteed and they do not form part of any contract.

**Celebrating 30 years of successful Sales and Lettings in Merton**

