



Evelyn Street, Deptford

Asking Price £300,000 Leasehold

OLIVER J JAQUES
EST. 1986



Evelyn Street, Deptford

Located in a highly convenient spot within a third mile of Deptford's mainline station and just half a mile from Overground services at New Cross, this well presented two bedroom apartment offers easy commuting possibilities to various parts of the City. The property sits on the ninth floor of Arlington House and enjoys skyline City views from the private west facing balcony. Briefly comprising two double bedrooms, west-facing reception room and separate kitchen. The interiors have been lovingly maintained by the current owners and are contemporary throughout. The large windows are typical of the age of the building and flood the space with natural light. This property makes a convenient central home or could potentially be used as a three bed rental (stp) in a highly rentable position.

- Two Double Bedrooms
- Ninth Floor Apartment
- Private Balcony with City Views
- Large Windows Throughout
- High Decorative Order
- 630Mbps Broadband Available

South East London
020 7231 5050

Email southeast@o-j.co.uk

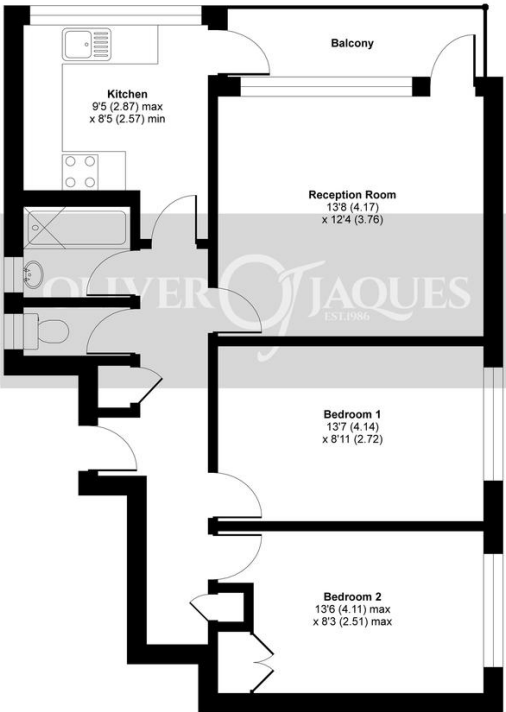
229-231 Lower Road, London, SE16 2LW

web www.o-j.co.uk

Every care has been taken with the preparation of this brochure but it is for general guidance only and complete accuracy cannot be guaranteed. If there is any point, which is of importance professional verification should be sought. This brochure does not constitute a contract or part of a contract. We are not qualified to verify tenure of property. Prospective purchasers should seek clarification from their solicitor or verify the tenure of this property for themselves by visiting www.gov.uk/government/organisations/land-registry. The mention of any appliances, fixtures or fittings does not imply they are in full working order. Photographs are reproduced for general information and it cannot be inferred that any item shown is included in the sale. All dimensions are approximate. Walking times are taken from Google Maps and measured from the centre of the postcode, which may differ from the individual property. We always refer prospective buyers to our panelled conveyancers and Chancery Mortgage Services Ltd. It is your decision whether to use them. Should you decide to do so you should know that we could receive a referral fee from them for recommending them to you.

Arlington House, Evelyn Street,, Deptord, London, SE8

Approximate Area = 657 sq ft / 61 sq m
For identification only - Not to scale



NINTH FLOOR

Certified Property Measurer
Floor plan produced in accordance with RICS Property Measurement Standards incorporating International Property Measurement Standards (IPMS2 Residential). © richrecom 2021. Produced for Oliver Jacques - REF: 705594

%epcGraph_c_1_366%