



Auckland Hill, SE27
£375,000

0208 702 9888
pedderproperty.com

pedder



In general

- Purpose built block
- Two double bedrooms
- Large lounge
- Fully fitted modern kitchen
- Luxurious bathroom
- Communal garden
- Garage
- Beautifully presented throughout
- Bright and airy
- Share of Freehold

In detail

For sale is this stunning two double bedroom apartment in this desirable purpose built block ideally located on the popular Auckland Hill, SE27.

This property offers modern and attractive decorative presentation throughout, with spacious accommodation comprising of two double bedrooms with built in wardrobe, large and well presented lounge, immaculate fully fitted kitchen, modern bathroom, also with the benefit of a garage and communal garden.

This flat provides an excellent opportunity for investment, as well as a wonderful place to live.

This is an ideal first-time purchase for those that will benefit from the excellent transport links and the ability to comfortably work from home.

Solway House, Auckland Hill is ideally located between West Norwood, Gipsy Hill, West Dulwich offering easy access into central London and The City from nearby West Norwood station (7 mins walk) with regular services into London Victoria and London Bridge.

Norwood Road offers a host of bars, shops and amenities including the new PictureHouse Cinema, health and leisure centre and library.

Early viewings are highly recommended.

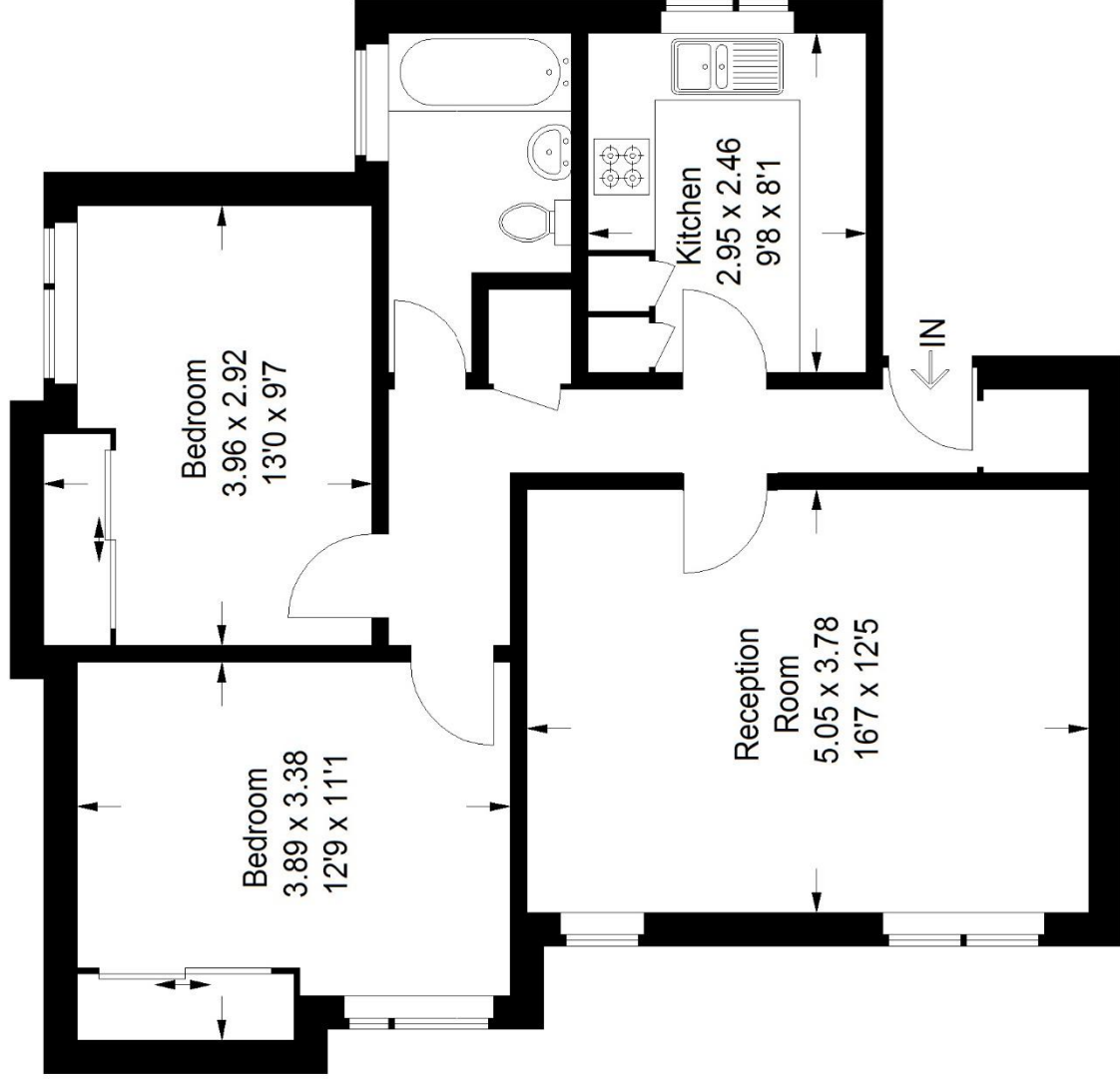
EPC: C | Council Tax Band C | Lease: 950 years remaining | SC: £1,400 PA | GR: N/A | BI: Included in service charge



Floorplan

Solway House, SE27

Approximate Gross Internal Area
65.6 sq m / 706 sq ft



Second Floor

Score	Energy rating	Current	Potential
92+	A		
81-91	B		
69-80	C	70 c	78 c
55-68	D		
39-54	E		
21-38	F		
1-20	G		

Pedder Property Ltd trading as Pedder for themselves and for the vendor/landlord of this property whose agents they are, give notice that (1) these particulars do not constitute any part of an offer or contract, (2) all statements contained within these particulars are made without responsibility on the part of Pedder or the vendor/landlord, (3) whilst made in good faith, none of the statements contained within these particulars are to be relied upon as a statement of representation or fact, (4) any intending purchaser/tenant must satisfy him/herself by inspection or otherwise as to the correctness of each of the statements contained within these particulars, (5) the vendor/landlord does not make or give either Pedder or any person in their employment any authority to make or give representation or warranty whatsoever in relation to this property.

Copyright www.pedderproperty.com © 2022

These plans are for representation purposes only as defined by RICS - Code of Measuring Practice. Not drawn to Scale. Windows and door openings are approximate. Please check all dimensions, shapes and compass bearings before making any decisions reliant upon them.