



Orchard Grove, SE20  
OIEO £325,000

0208 702 9333  
[pedderproperty.com](http://pedderproperty.com)

**pedder**



# In general

- No onward chain
- One bedroom house
- Residents parking
- Garden
- Quiet location
- Nearby transport links

# In detail

A modern one bedroom house tucked away on a sought-after private development in Anerley.

Features include a neutrally decorated lounge and kitchen area with bamboo flooring, a fully tiled bathroom, as well as a generous sized double bedroom. Private garden and parking are also some of the pluses that come with this property.

Orchard Grove is located off Thicket Road and so well located for all three main stations; Crystal Palace, Anerley and Penge West as well as being close to the Crystal Palace Triangle and the Crystal Palace Park itself.

The property would make for a perfect first home or investment purchase.<br><br>Viewings highly advised- no onward chain

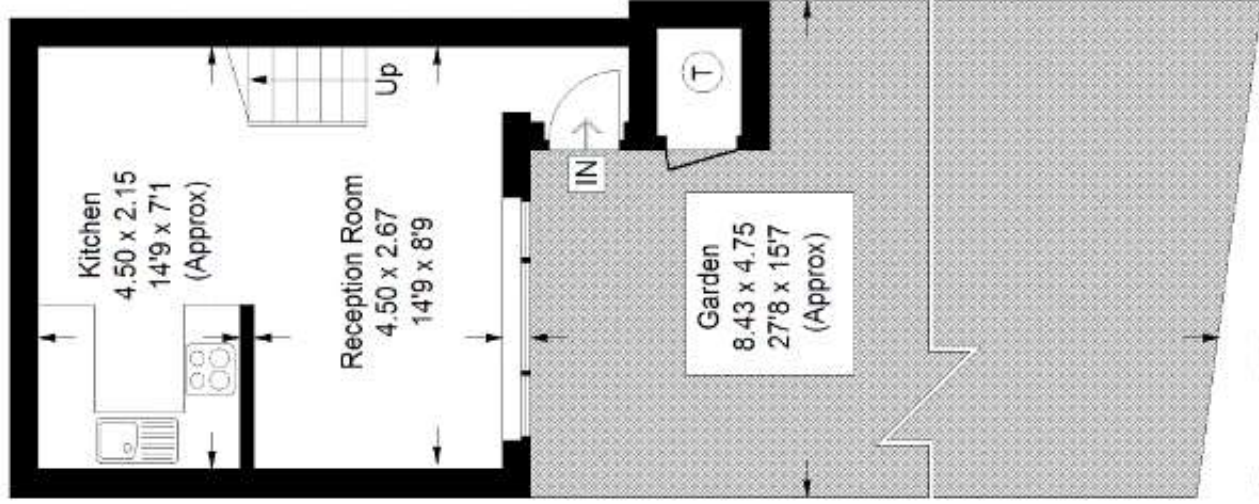
EPC: C | Council Tax Band: C



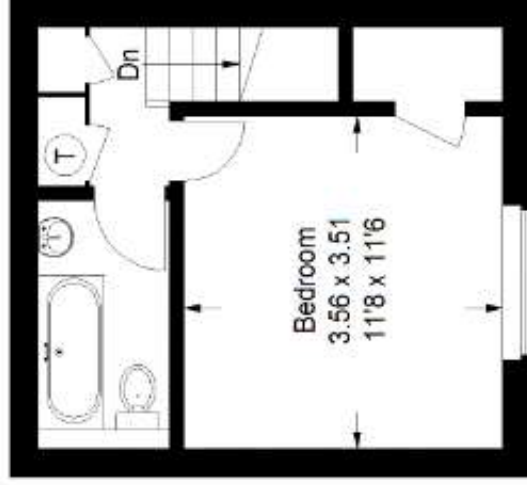
# Floorplan

## Orchard Grove, SE20

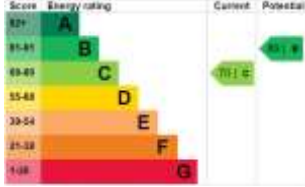
Approximate Gross Internal Area  
47.1 sq m / 507 sq ft



**Ground Floor**



**First Floor**



Pedder Property Ltd trading as Pedder for themselves and for the vendor/landlord of this property whose agents they are, give notice that (1) these particulars do not constitute any part of an offer or contract, (2) all statements contained within these particulars are made without responsibility on the part of Pedder or the vendor/landlord, (3) whilst made in good faith, none of the statements contained within these particulars are to be relied upon as a statement of representation or fact, (4) any intending purchaser/tenant must satisfy him/herself by inspection or otherwise as to the correctness of each of the statements contained within these particulars, (5) the vendor/landlord does not make or give either Pedder or any person in their employment any authority to make or give representation or warranty whatsoever in relation to this property.

Copyright www.pedderproperty.com © 2015  
These plans are for representation purposes only as defined by RICS - Code of Measuring Practice. Not to Scale