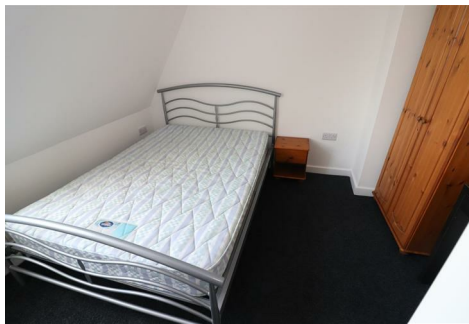




www.dpsestates.co.uk



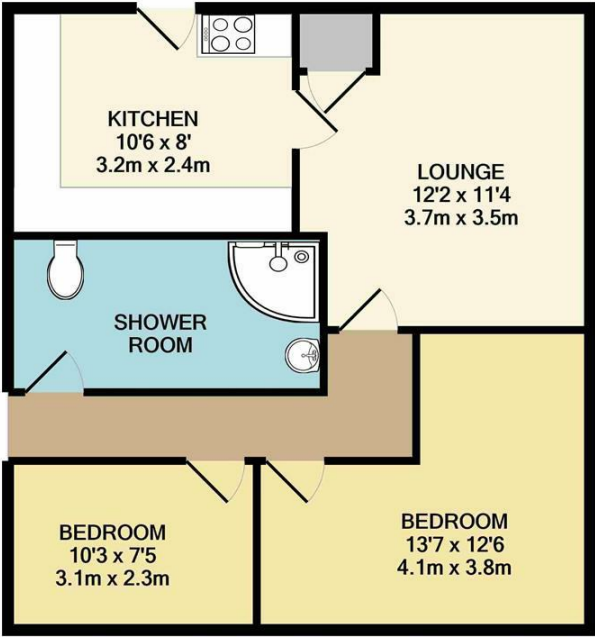
133a Colman Road, Norwich, NR4 7HA

£1,800 Per month

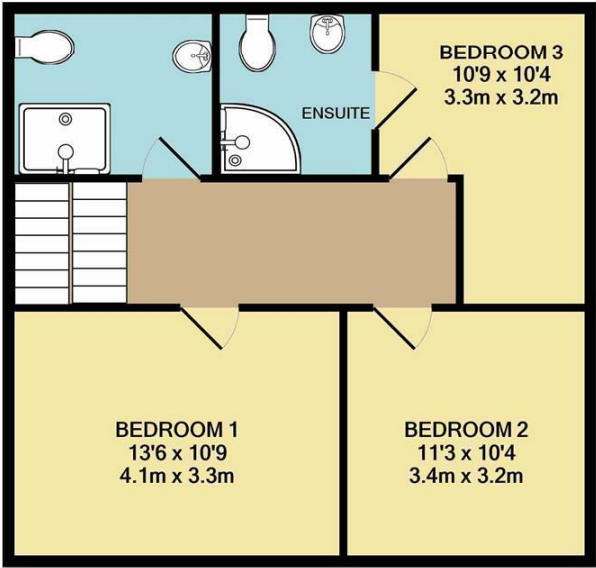
Brand New Student Let - DPS Estates are delighted to offer this newly refurbished student house situated within Walking Distance of the University of East Anglia. The accommodation comprises of five bedrooms, three shower rooms, communal lounge and modern fitted kitchen.



Floor Plan



GROUND FLOOR
APPROX. FLOOR
AREA 614 SQ.FT.
(57.1 SQ.M.)



1ST FLOOR
APPROX. FLOOR
AREA 547 SQ.FT.
(50.8 SQ.M.)

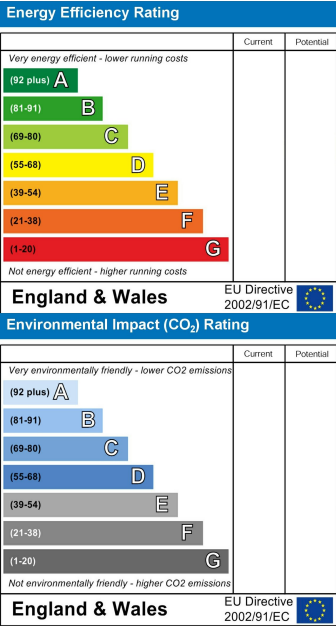
TOTAL APPROX. FLOOR AREA 1161 SQ.FT. (107.9 SQ.M.)

Whilst every attempt has been made to ensure the accuracy of the floor plan contained here, measurements of doors, windows, rooms and any other items are approximate and no responsibility is taken for any error, omission, or mis-statement. This plan is for illustrative purposes only and should be used as such by any prospective purchaser. The services, systems and appliances shown have not been tested and no guarantee as to their operability or efficiency can be given
Made with Metropix ©2021

Area Map



Energy Efficiency Graph



These particulars, whilst believed to be accurate are set out as a general outline only for guidance and do not constitute any part of an offer or contract. Intending purchasers should not rely on them as statements of representation of fact, but must satisfy themselves by inspection or otherwise as to their accuracy. No person in this firm's employment has the authority to make or give any representation or warranty in respect of the property.