

Location:

Located in a quiet residential road in Chiswick, this flat is ideally located a short walk from the amenities of the Chiswick high road and the Chiswick park and Turnham green underground

Key points:

- Two double bedrooms
- Ground Floor
- Garden Flat
- Idyllic location in Chiswick
- separate Kitchen

Priory Road

Approximate Gross Internal Area
48.9 sq m / 526 sq ft

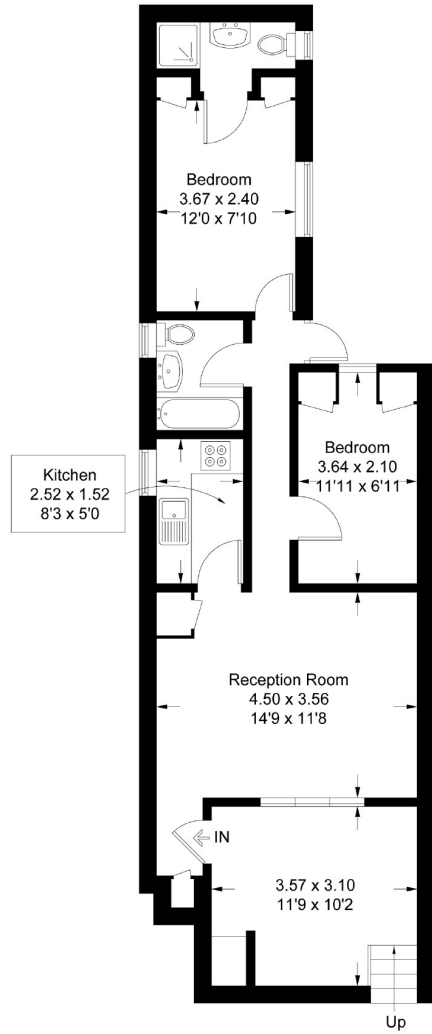


Illustration for identification purposes only, measurements are approximate, not to scale. FloorplansUsketch.com © 2016 (ID259854)

Do Better:

Aston Rowe

Acton:

E acton@astonrowe.co.uk
103-105 Churchfield Road,
London W3 6AH
T 020 8992 3600

Brook Green & Hammersmith:

E brookgreen@astonrowe.co.uk
82 Shepherds Bush Road,
London W6 7PH
T 020 7871 6997



Asking price £450,000

Priory Road,
London W4 5JB

Two double Ground floor Maisonette with private garden.

- 1 Reception rooms
- 2 Bedrooms
- 1 Bathrooms



A well presented and spacious two bedroom ground floor garden conversion flat, situated in a popular residential road in Chiswick. This property benefits from a large reception room with dining space, separate kitchen, master bedroom with Ensuite shower room further benefits a second double bedroom and private patio. Situated on a quiet residential road moments from the shopping amenities of the Chiswick high road, the flat further benefits from the transport amenities of Turnham Green, South Acton and Chiswick Park stations, as well as the bus routes of the nearby Southfield Road.

**The current owner says:
A well presented and spacious two bedroom, lower ground floor flat**

-  Period Terrace
-  2 bedrooms
-  1 reception
- 
-  Chiswick

What's better:

This property is offered to the market with no upper chain, and is walking distance to Chiswick High road and the District Line tube at Turnham Green station

