

Oakley Walk, Greyhound Road

Hammersmith, London, W6





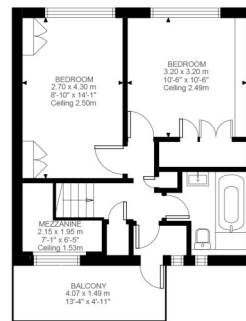
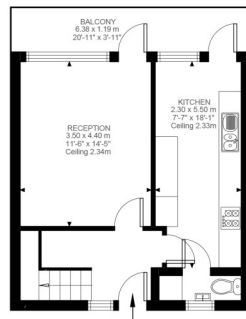
Oakley Walk, Greyhound Road

Hammersmith, London, W6

Price Guide: £499,950

A fantastic 814 sq. ft. two double bedroom split-level flat with a private balcony located within a 10 minute walk to both Hammersmith and Barons Court underground stations. The property which is well presented throughout benefits from a 14'5 living room with access to the balcony, an 18'4 kitchen also with balcony access, a cloakroom, two generous double bedrooms with built in wardrobes and a well fitted bathroom suite.

Further benefits include a cleverly designed mezzanine area and views from the balcony which overlooks the park. Oakley Walk is a much sought-after location and is within a short walk to the local shops and restaurants including Waitrose, Sainsburys, Café Nero, Pret-a-Manger, Poppy's, The Crabtree pub and The Pear Tree pub. Early viewing highly recommended. .



Oakley Walk, W6
Approximate Gross Internal Area
75.62 SQ.M / 814 SQ.FT

Illustration for identification purposes only. Not to scale.
Floor Plan Drawn According To RICS Guidelines.

Fantastic two double bedroom split-level apartment

Sought after location | Spacious reception room | Well fitted kitchen | Family Bathroom & cloakroom

Private balcony | Cleverly designed mezzanine area | Views over Bayonne Park

Numerous shops bars & restaurants nearby| 814 Sq. Ft. (75.62 Sq. M.) Leasehold

All viewings by appointment
through our **Hammersmith Office:**

T: 020 7385 7000
E: hammersmith@lawsonrutter.com

192Fulham Palace Road, London
W6 9PA

In accordance with the Property Misdescription Act 1991, we wish to emphasise that the information given in these particulars is intended to help you decide whether you wish to view this property. Whilst every care is taken to ensure the accuracy of these particulars please note that all measurements are approximate and we are, for the accuracy of other information, reliant on what the seller has provided. We strongly recommend that you rely on your own inspections and those of your advisors to establish the details of any aspects which are of particular importance. Please note that we have not undertaken any survey of the property or the appliances within it and the buyer must rely on their own investigations prior to exchange of contracts.

