



- Located on a private idyllic island
- Unique Grade II listed Victorian

Home

- Approx. 1.9 Acres
- 13 Bedrooms
- 5 Bathrooms

Eyot House, Weybridge

Asking Price Of £3,200,000

Property description

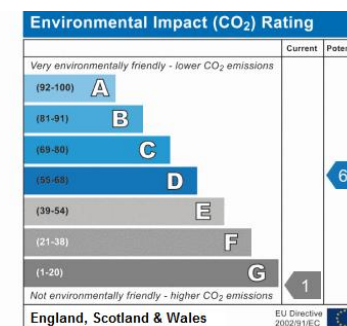
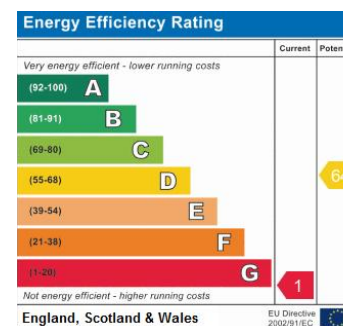
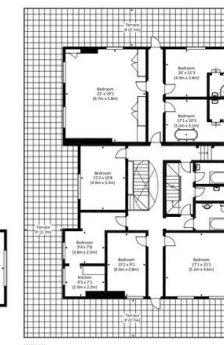
A unique Grade II listed Victorian property set in approximately 1.9 acres on its own beautiful island and accessed by its own private footbridge. Now in need of full modernisation. The new owners can look to put their own stamp on this unique property which now requires complete restoration. We believe this property would be perfect as a country retreat or a boutique hotel subject to necessary planning permissions. This is a once in a lifetime opportunity to own a property on its own private island in the River Thames less than an hour's drive into central London.



D'OYLY CARTE ISLAND, KT13

Approx. gross internal area 7117 Sq Ft. / 661.2 Sq M.

Approx. gross internal area 7210 Sq Ft. / 669.8 Sq M. Inc. Restricted Height



13 Adelaide Road, London, NW3
3QE

www.chaseapartments.com
0207 722 5022
info@chaseapartments.com

Agents Note: Whilst every care has been taken to prepare these sales particulars, they are for guidance purposes only. All measurements are approximate and for general guidance purposes only and whilst every care has been taken to ensure their accuracy, they should not be relied upon and potential buyers are advised to recheck the measurements.