



Highland Road SE19
£425,000

0208 702 9333
[pedderproperty.com](https://www.pedderproperty.com)

pedder



In general

- A share of the freehold
- Two double bedrooms
- Central location
- Popular art-deco development
- Beautiful mature grounds
- Balcony
- Parquet flooring

In detail

A beautifully presented two bedroom raised ground floor property forming part of a popular art deco development moments from central Crystal Palace and Gipsy Hill station.

This characterful home benefits from original parquet flooring and a balcony that directly accesses mature and well maintained communal grounds - a private leafy retreat on summer days.

Other notable features include two double bedrooms, a generous kitchen with lots of work and storage space, fresh neutral décor, a share of the freehold, and residents parking.

Highland Road is a quiet residential location and is well placed for an array of shopping and leisure options at the Triangle.

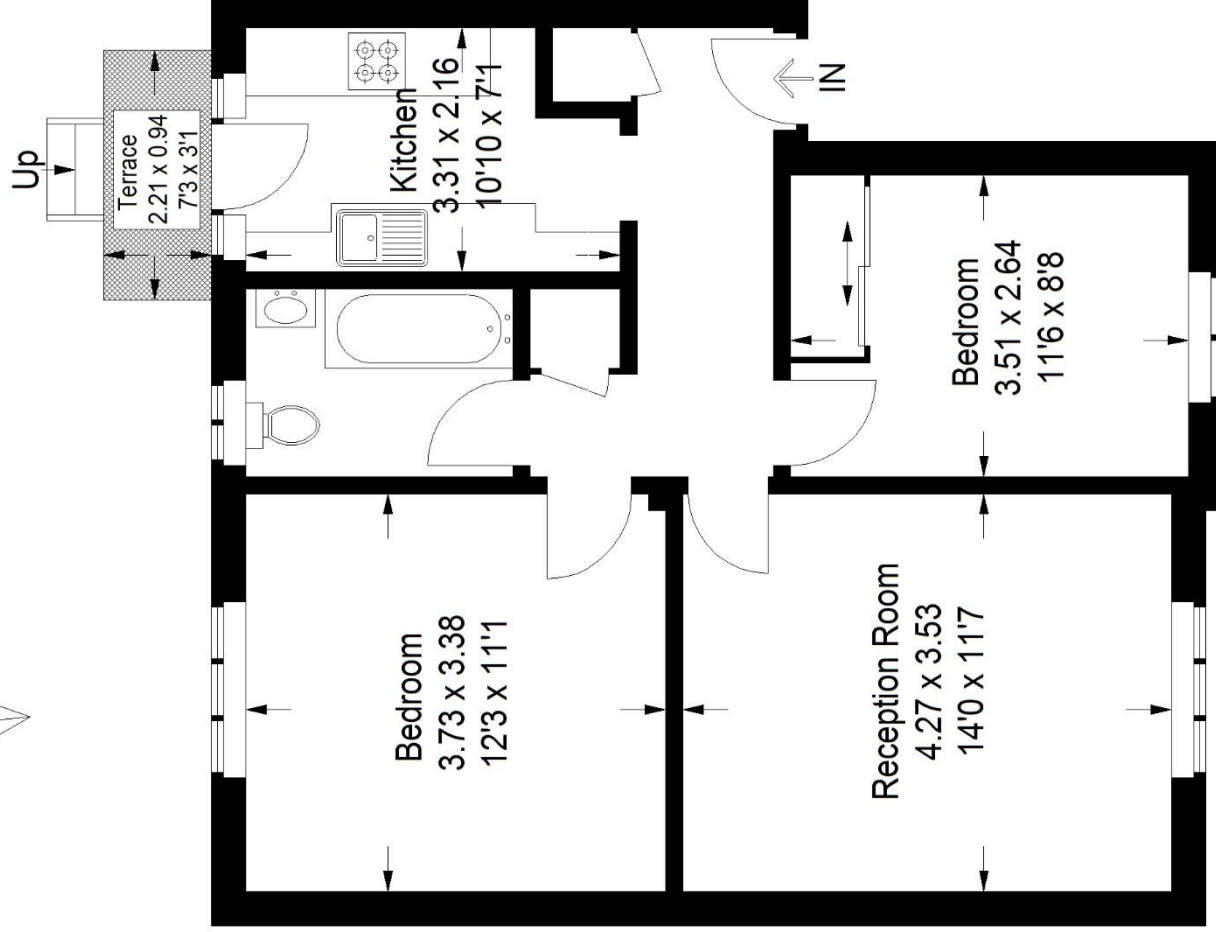
EPC: TBC | Council Tax Band: B | Lease: 960 years remaining | SC: £1,893 | GR: £0 | BI: Incl in SC



Floorplan

Highland Court, SE19

Approximate Gross Internal Area
58.1 sq m / 625 sq ft



Ground Floor

Copyright www.pedderproperty.com © 2022

These plans are for representation purposes only as defined by RICS - Code of Measuring Practice. Not drawn to Scale. Windows and door openings are approximate. Please check all dimensions, shapes and compass bearings before making any decisions reliant upon them.