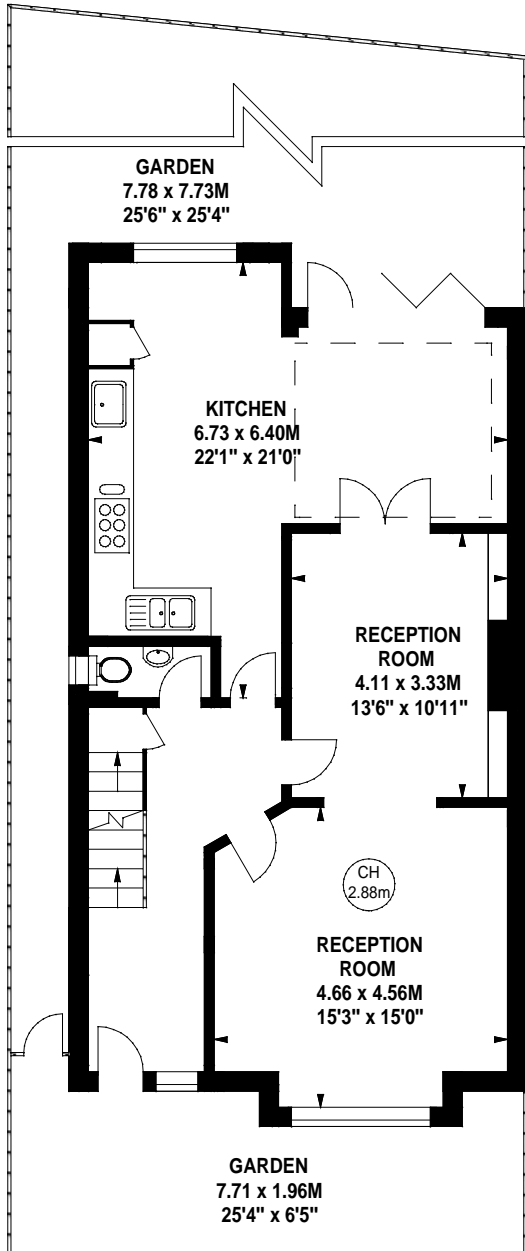
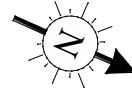


Gainsborough Road, W4

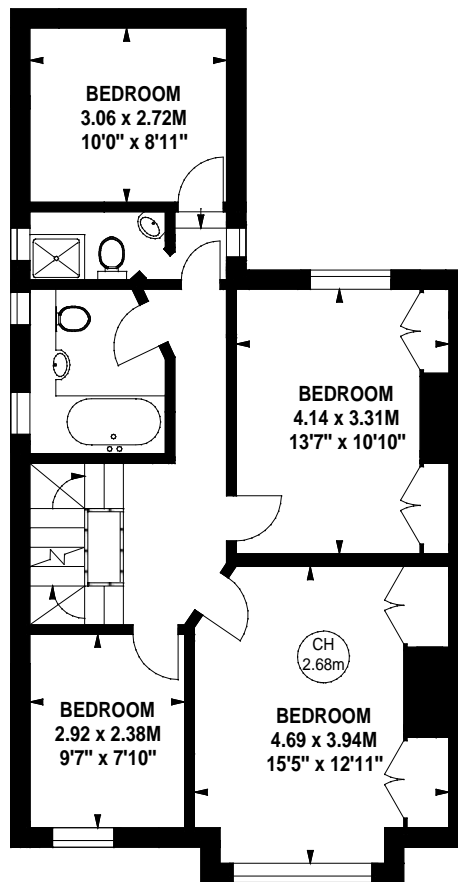
Approximate gross internal area

196.20 sq m / 2112 sq ft

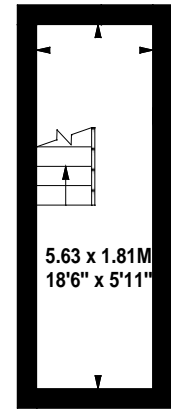
Key :
CH - Ceiling Height



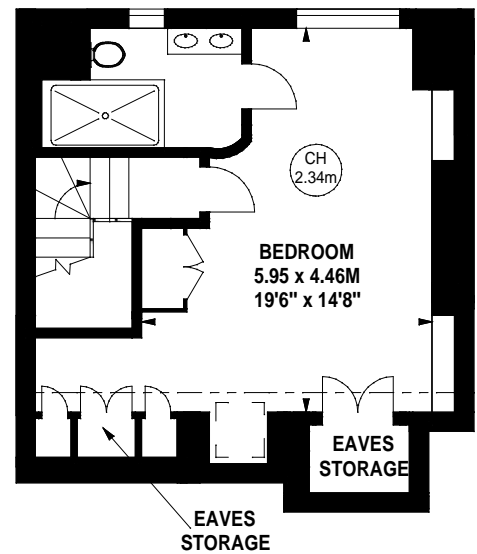
Ground Floor
855 sq ft



First Floor
732 sq ft



Cellar
109 sq ft



Second Floor
416 sq ft

The floor plan is not to scale and measurements and areas shown are approximate and therefore should be used for illustrative purposes only. The plan has been prepared in accordance with the RICS code of Measuring Practice and whilst we have confidence in the information produced, it must not be relied on. If there is any aspect of particular importance, you should carry out or commission your own inspection of the property.
Copyright of FeaturePRO.