

# Davidson



- 3/4 Bed New Build Townhouses - Brand NEW!
- Heart of the Jewellery Quarter
- Allocated Parking Space Included in Price
- High Spec Finishes Throughout

Sydenham Place Townhouse, Tenby Street North, Jewellery Quarter, Birmingham, B1 3EN

Asking Price Of £649,950

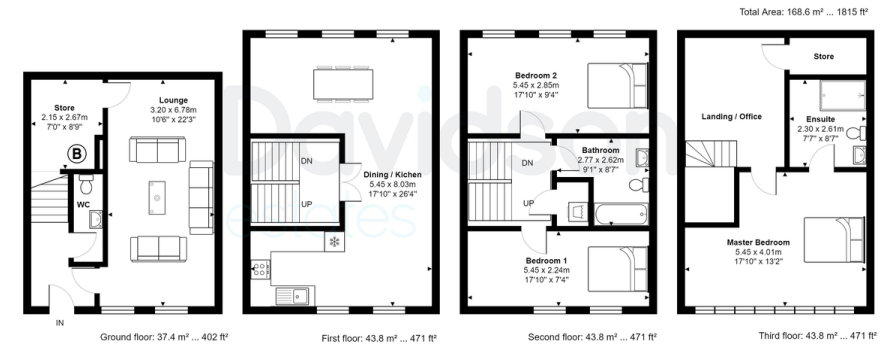
**\*NOW LAUNCHED\*** New Build Townhouses in the JEWELLERY QUARTER | 3 / 4 Bed Townhouses in a Boutique Development | Secluded & Private | 1,815 sq ft | High Spec Finishes Throughout | Mezzanine Outdoor Space | Allocated Parking Space Included | Charging Points for Electric Cars | VIEWINGS TAKING PLACE - Call Davidson Estates to Arrange a Viewing Today!





3x 3x 2x 2x

Sydenham Place, 20 Tenby Street North, Jewellery Quarter, Birmingham, B1 3EN



Floorplan measurements are for illustrative purpose only. Floor plan by www.sebastiano.co.uk.

## Description

Davidson Estates are delighted to present a brand-new option in the Jewellery Quarter-located within the boutique development of Sydenham Place, this new build townhouse provides luxury living in a vibrant area, while also providing an air of seclusion and privacy.

Situated on the cusp of Birmingham's city centre, the ever-popular Jewellery Quarter is an attractive mix of narrow streets, fine architecture and listed buildings boasting a rich history where, even now, 40% of the UK's jewellery is still produced and is home to more jewellers than anywhere in Europe.

## Key details

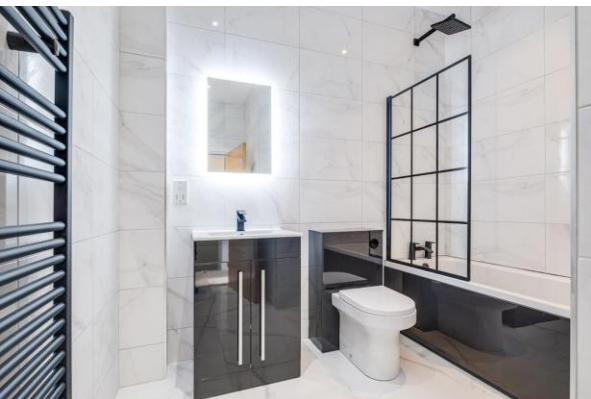
Size: 1,815 sft internal space with 3 bedrooms with potential 4th bedroom (not including the private garden space)

Parking: 1 allocated space in gated residence

Ground Rent: £250.00 per annum

Service Charge: £3,093 per annum (approx.)

Years Remaining on Lease: 999



Unit 2 Liberty Place, 26-38  
Sheepcote Street, Birmingham,  
West Midlands, B16 8AE

[www.davidsonestates.co.uk](http://www.davidsonestates.co.uk)  
0121 455 7727  
[info@davidsonestates.co.uk](mailto:info@davidsonestates.co.uk)

Agents Note: Whilst every care has been taken to prepare these particulars, they are for guidance purposes only. All measurements are approximate and are for general guidance purposes only and whilst every care has been taken to ensure their accuracy, they should not be relied upon and potential buyers/tenants are advised to recheck the measurements