



# Park Central Building, The Bow Quarter

Asking Price £450,000 Leasehold

OLIVER  JACQUES  
EST. 1986





## Park Central Building, The Bow Quarter

A beautifully presented two bedroom apartment on the second floor of the Park Central Building in the highly desirable Bow Quarter development. The updated apartment has a large reception area with a semi open plan modern with updated kitchen. The property boasts an abundance of natural light and comprises of a large living room with an east-facing Juliette balcony, a modernised updated bathroom, a double sized second bedroom and a large main bedroom with ample storage space. The property also benefits from an on-site parking space, convenience store and access to the leisure centre with a swimming pool, Jacuzzi and sauna which is all based within the grounds of this gated development.

- Two Bedroom Apartment
- Naturally Bright
- 24hr Concierge
- Modern Design
- On-Site Allocated Parking
- Access to Leisure Centre

Oliver Jaques Bow  
020 8980 0999

Email [east@o-j.co.uk](mailto:east@o-j.co.uk)

Unit A Arlington Building, 60 Fairfield Road, London, E3 2UB

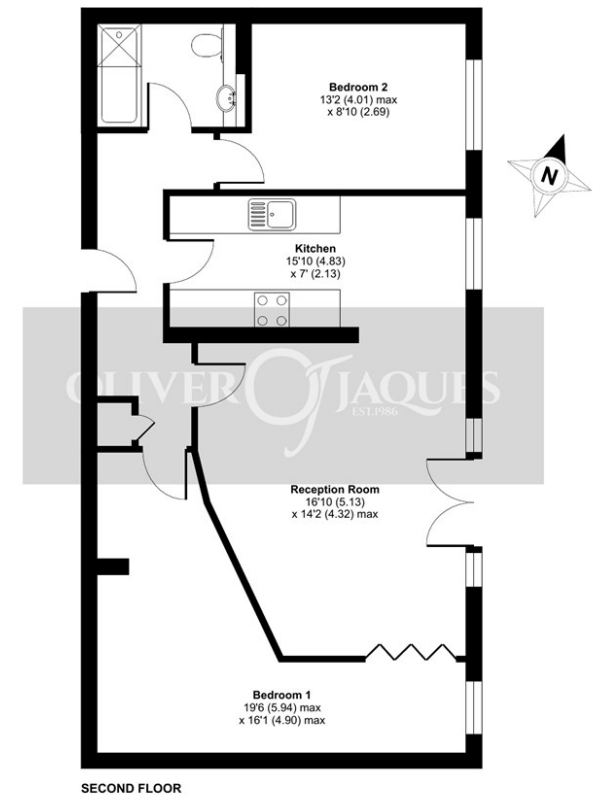
web [www.o-j.co.uk](http://www.o-j.co.uk)

Every care has been taken with the preparation of this brochure but it is for general guidance only and complete accuracy cannot be guaranteed. If there is any point, which is of importance professional verification should be sought. This brochure does not constitute a contract or part of a contract. We are not qualified to verify tenure of property. Prospective purchasers should seek clarification from their solicitor or verify the tenure of this property for themselves by visiting [www.gov.uk/government/organisations/land-registry](http://www.gov.uk/government/organisations/land-registry). The mention of any appliances, fixtures or fittings does not imply they are in full working order. Photographs are reproduced for general information and it cannot be inferred that any item shown is included in the sale. All dimensions are approximate. Walking times are taken from Google Maps and measured from the centre of the postcode, which may differ from the individual property. We routinely refer clients to Chancery Mortgage Services Ltd. It is your decision whether you choose to deal with Chancery Mortgage Services Ltd. In making that decision, you should know that we receive an annual payment benefits from Chancery Mortgage

## Park Central Building, Bow Quarter, Bow, London, E3

Approximate Area = 757 sq ft / 70.3 sq m

For identification only - Not to scale



Floor plan produced in accordance with RICS Property Measurement Standards incorporating International Property Measurement Standards (IPMS2 Residential). © nchecom 2022. Produced for Oliver Jaques. REF: 818836

**Tenure:** Leasehold  
**Ground Rent:** TBC  
**Service Charge:** TBC  
**Lease Expires:** TBC  
**Shared Ownership:** No  
**Council Tax Band:** Tower Hamlets London Borough Council (Band )  
**£TBC**

