



ATTRACTIVE DETACHED FIVE BEDROOM HOME IN A PRIME LOCATION

Murray Road, Northwood, Middlesex

ROBSONS



ATTRACTIVE DETACHED FIVE BEDROOM HOME IN A PRIME LOCATION

MURRAY ROAD, NORTHWOOD, MIDDLESEX

FIVE BEDROOMS • TWO EN-SUITE BATHROOMS • FAMILY BATHROOM • MASTER BEDROOM WITH DRESSING ROOM AND EN-SUITE • OPEN PLAN KITCHEN/DINING ROOM • DOWNSTAIRS WC • LIVING AREA • BALCONY • PRIVATE GARDEN • GARAGE AND EAVES STORAGE •

Description

A delightfully presented, recently refurbished property just steps from Northwood town centre and station. This substantial detached family home has been lovingly maintained by the current owner and offers elegant, light and beautifully proportioned rooms.

The property provides four bedrooms to the first floor including a main bedroom with en-suite bathroom, 15' of integrated wardrobes and air conditioning unit. There are three further double bedrooms, one with a front aspect balcony plus an additional family bathroom. A brand new loft conversion offers an excellently designed master suite with large bedroom area, walk in closet/dressing room and spacious en suite. Air conditioning unit to bedroom. There is also easy access to large eaves storage.

On the ground floor there is a spacious living room with bay window aspect. The large open-plan kitchen/dining room features a bespoke streamlined German kitchen with large breakfast bar area and access to the integral garage. The open dining area features double doors that lead onto the large terrace and well-maintained private mature garden.

There is a guest WC and downstairs coat cupboard.

At the front there is off-street parking for several vehicles, access to the integral garage and an east facing balcony.

Location

Northwood provides a range of shopping facilities including Waitrose supermarket, a variety of restaurants and other amenities with the Metropolitan Line station providing access to Baker Street and the City. There is a plethora of state and private schooling together with a wide choice of recreational facilities, which include golf courses and fitness centres. The M1, M40 and M25 motorways are also accessible.

Guide Price: £1,500,000

Tenure: Freehold

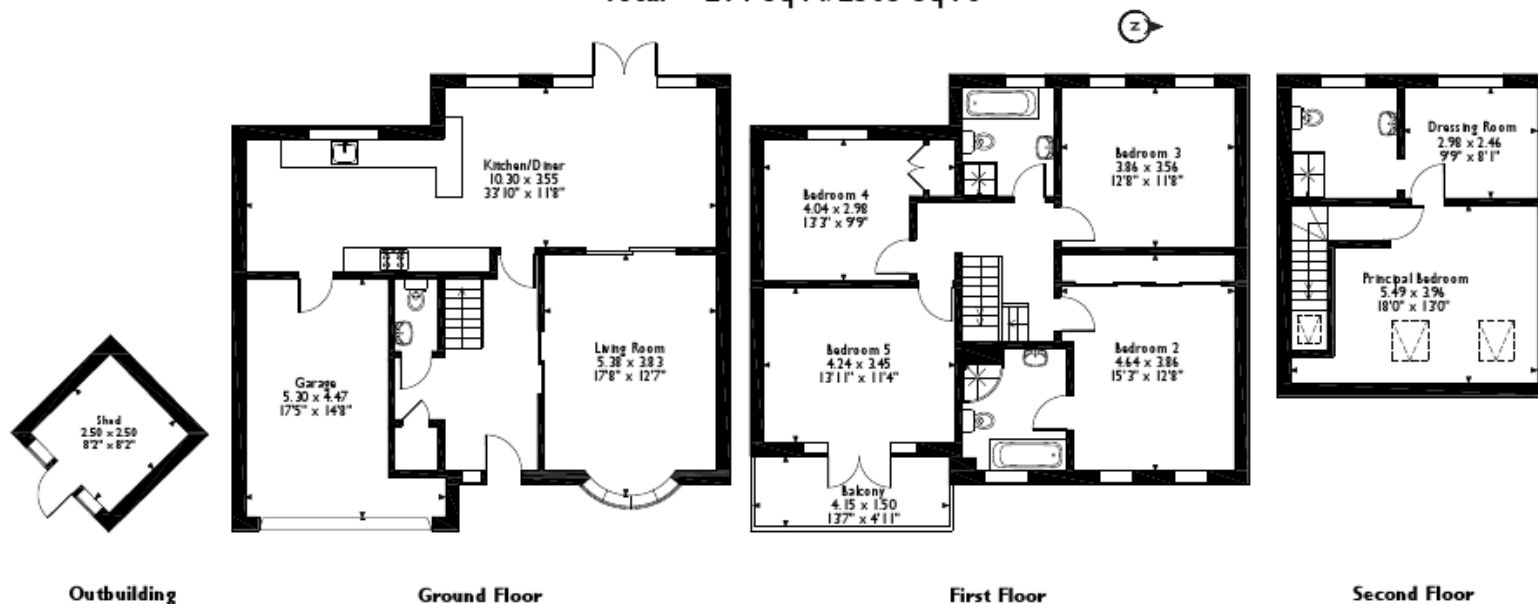
Energy Efficiency Rating: C

Local Authority: London Borough of Hillingdon





Murray Road, Northwood
 Approximate Gross Internal Area
 Main House = 208 Sq M/2240 Sq Ft
 Outbuilding = 6 Sq M/65 Sq Ft
 Total = 214 Sq M/2305 Sq Ft



Please note that the location of doors, windows and other items are approximate and this floorplan is to be used for illustrative purposes only. Unauthorized reproduction is prohibited.



Address 7 Clive Parade, Northwood, Middlesex, HA6 2QF
 Tel: 01923 835355 Northwood@robsonswb.com
www.robsonswb.com

www.
 the
 londonoffice.co.uk
 40 ST JAMES'S PLACE SW1

Important notice: Robsons, their clients and any joint agents give notice that 1: They are not authorised to make or give any representations or warranties in relation to the property either here or elsewhere, either on their own behalf or on behalf of their client or otherwise. They assume no responsibility for any statement that may be made in these particulars. These particulars do not form part of any offer or contract and must not be relied upon as statements or representations of fact. 2: Any areas, measurements or distances are approximate. Plot sizes and dimensions are taken from Promap and are approximate. The text, photographs and plans are for guidance only and are not necessarily comprehensive. It should not be assumed that the property has all necessary planning, building regulation or other consents and Robsons have not tested any services, equipment or facilities. Purchasers must satisfy themselves by inspection or otherwise.

