



Park Hall Road, SE21
£375,000

020 8702 8111
pedderproperty.com

pedder



In general

- An attractive period conversion flat
- Spacious and well-presented throughout
- One double bedroom
- Lounge/dining room open-plan to a fitted kitchen
- Modern bathroom
- Private roof terrace
- Popular location close to local shops and transport links
- Share of freehold
- Offered with no onward chain

In detail

An attractive period conversion flat set within this imposing Victorian building situated on a popular residential road in West Dulwich.

This lovely apartment offers spacious and well-presented accommodation comprising of one double bedroom, large lounge/dining room open-plan to a fitted kitchen and modern bathroom. From the landing there is access to a private roof terrace.

The property is well located for access to West Dulwich and Dulwich Village with their numerous shops, cafes, restaurants and popular parks. Local shops and restaurants can also be found nearby in Rosendale Road and Park Hall Road. Excellent rail links to central London are from nearby West Dulwich (London Victoria/London Blackfriars), Tulse Hill (London Bridge/London Blackfriars) and West Norwood (London Bridge/London Victoria).

The property is offered with no onward chain and a share of freehold.

EPC Rating: TBC | Council Tax Band: C | Lease Term Remaining: 983 years | BI: £250



Floorplan

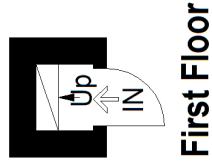
Park Hall Road, SE21

Approximate Gross Internal Area

First Floor = 0.5 sq m / 5 sq ft

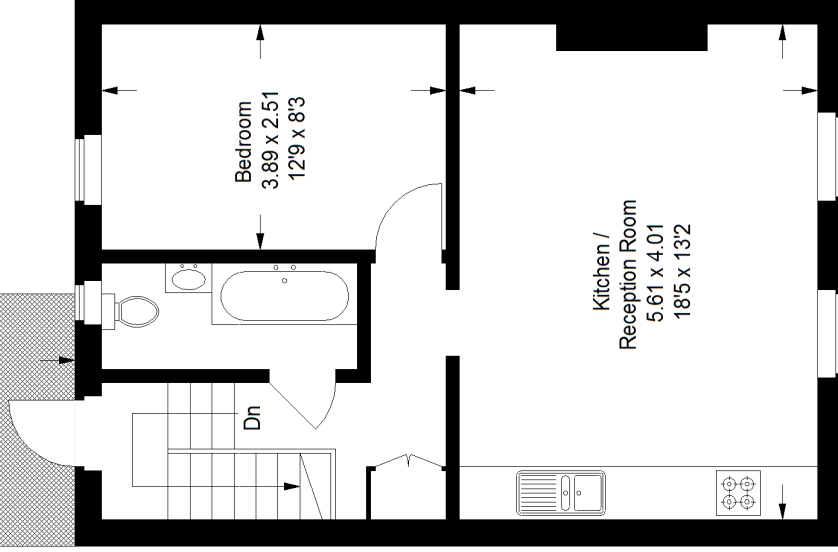
Second Floor = 45.5 sq m / 490 sq ft

Total = 46.0 sq m / 495 sq ft



First Floor

Balcony /
Terrace
4.14 x 2.77
13'7 x 9'1



Second Floor

Copyright www.pedderproperty.com © 2022

These plans are for representation purposes only as defined by RICS - Code of Measuring Practice. Not drawn to Scale. Windows and door openings are approximate. Please check all dimensions, shapes and compass bearings before making any decisions reliant upon them.