



AN IMPOSING FAMILY HOME IN A SOUGHT AFTER LOCATION

Home Farm Road, Rickmansworth, Hertfordshire, WD3 1JU

ROBSONS

AN IMPOSING FAMILY HOME IN A SOUGHT AFTER LOCATION

Home Farm Road, Rickmansworth, Hertfordshire
WD3 1JU

**THREE RECEPTION ROOMS • KITCHEN •
UTILITY ROOM • CLOAKROOM •
PRINCIPAL BEDROOM WITH ENSUITE
BATHROOM • FOUR FURTHER BEDROOMS
• FAMILY BATHROOM • ATTRACTIVE REAR
GARDEN • CARRIAGE DRIVEWAY •
DOUBLE GARAGE**

Description

An imposing five bedroom, two bathroom detached residence, occupying a half acre plot in a much sought after location.

This beautiful home with its impressively wide frontage is approached by a sweeping carriage driveway to a portico entrance. Inside, the central entrance hall gives access to a large, dual aspect living room, TV room, dining room, kitchen, utility and downstairs WC. To the first floor is an impressive principal bedroom, with fitted wardrobes, an ensuite bathroom and views over the attractive gardens. There are a further four double bedrooms and a family bathroom.





The south-westerly facing rear garden extends to over 160 feet in length, with a paved patio seating area overlooking the well-manicured lawns and mature flowerbeds, all beautifully screened with a selection of trees and shrubs. An impressive frontage spans approximately 120ft, with a large carriage driveway providing ample off street parking and access to the detached double garage.

Location

Home Farm Road is located within easy reach of the shops and Metropolitan Line stations at Moor Park (about 1.7 miles), Northwood (about 1.9 miles) and Rickmansworth (about 1.6 miles). Northwood and Rickmansworth town centres are also accessible and offer a further wide range of shops and restaurants. The local area is well served for state and private schools, which includes Merchant Taylors' Prep and Senior Schools, facilities nearby, including golf, health clubs and sailing at Rickmansworth Aquadrome. N.B We are advised that a section of Home Farm Road is Private and therefore we recommend that a purchaser seeks legal advice in respect of any liabilities etc.

Additional Information

Tenure: Freehold

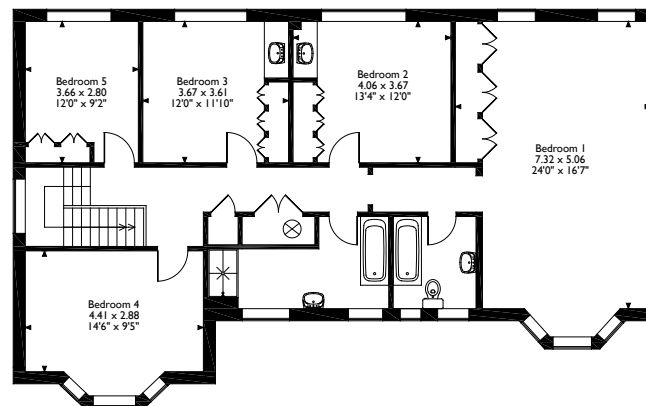
Local Authority: Three Rivers District Council

Council Tax Band: H

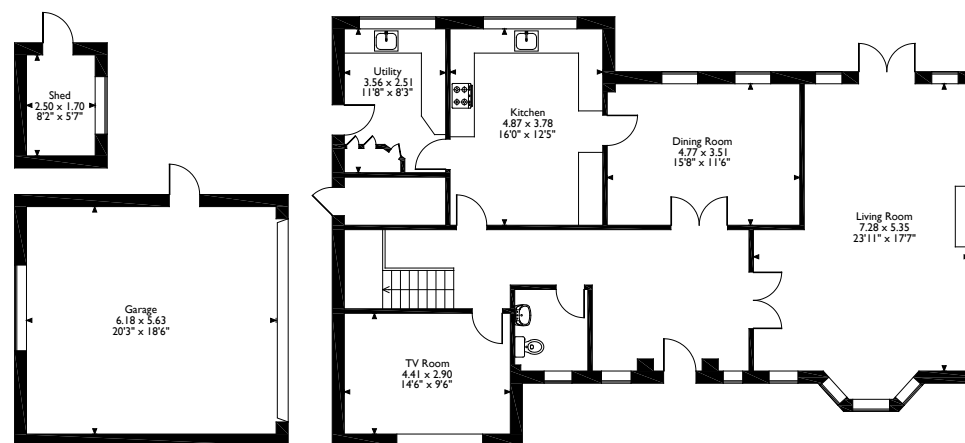
Energy Efficiency Rating: Band D



Home Farm Road, Rickmansworth
 Approximate Gross Internal Area
 Main House = 242 Sq M/2605 Sq Ft
 Garage = 35 Sq M/377 Sq Ft
 Outbuilding = 4 Sq M/43 Sq Ft
 Outside Store = 3 Sq M/32 Sq Ft
 Total = 284 Sq M/3057 Sq Ft



First Floor



Ground Floor

Please note that the location of doors, windows and other items are approximate and this floorplan is to be used for illustrative purposes only. Unauthorized reproduction is prohibited.

ROBSONS

The Estate Office, North Approach, Moor Park, Middlesex HA6 2JQ
 Tel: 01923 820622 moorpark@robsonswb.com

www.robsonswb.com

www.
 the
 londonoffice.co.uk
 40 ST JAMES'S PLACE SW1

Important notice: Robsons, their clients and any joint agents give notice that 1: They are not authorised to make or give any representations or warranties in relation to the property either here or elsewhere, either on their own behalf or on behalf of their client or otherwise. They assume no responsibility for any statement that may be made in these particulars. These particulars do not form part of any offer or contract and must not be relied upon as statements or representations of fact. 2: Any areas, measurements or distances are approximate. Plot sizes and dimensions are taken from Promap and are approximate. The text, photographs and plans are for guidance only and are not necessarily comprehensive. It should not be assumed that the property has all necessary planning, building regulation or other consents and Robsons have not tested any services, equipment or facilities. Purchasers must satisfy themselves by inspection or otherwise.