



18 Old Oak Common Lane
Acton
London
W3 7EL
T: 020 8749 9798
E: sales@churchillmathesons.com
www.churchillmathesons.com

Churchill&Mathesons

Shepherds Walk, Neasden, NW2 7BS

Asking Price £299,950 Leasehold



KEY FEATURES:

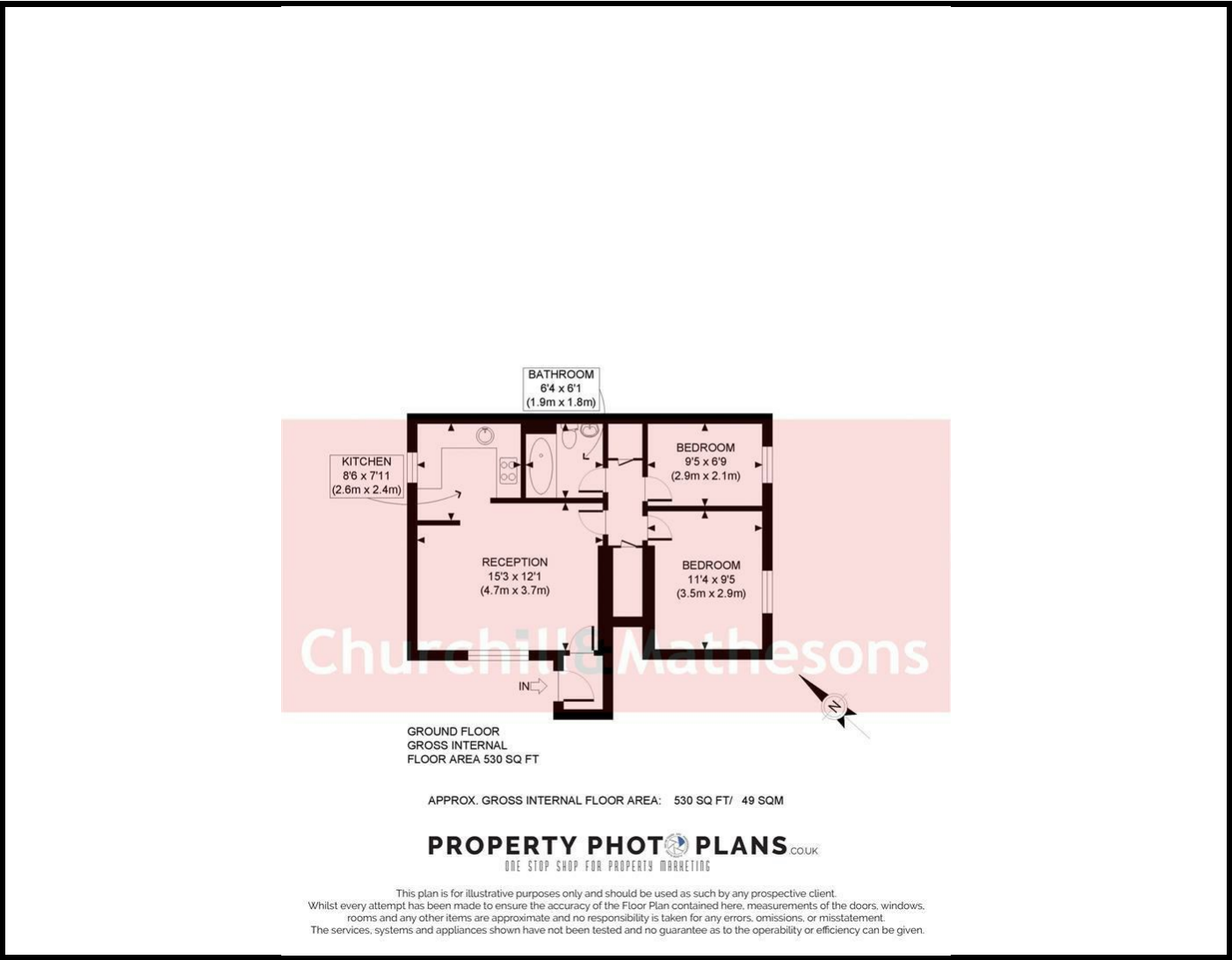
- TWO BEDROOM GROUND FLOOR
- ALLOCATED PARKING
- MODERN BATHROOM
- OPEN PLAN LIVING ROOM & KITCHEN
- GAS CENTRAL HEATING
- COMMUNAL GARDENS
- NEAREST STATION NEASDEN

A TWO BEDROOM GROUND FLOOR MAISONETTE with own front door and ALLOCATED PARKING.

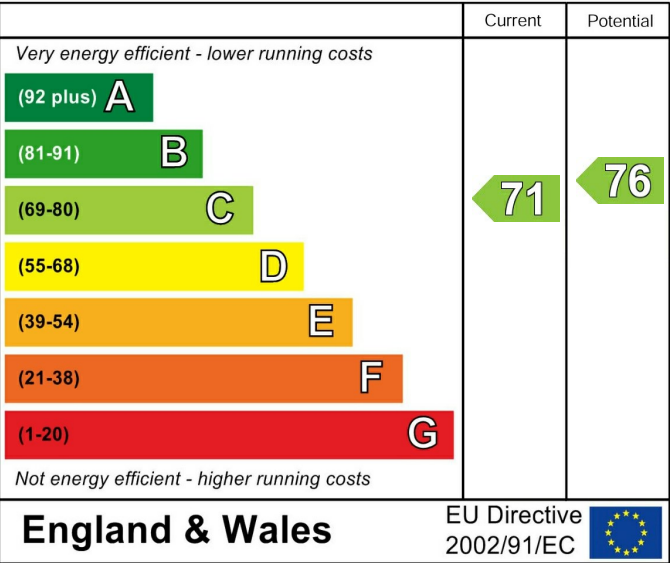
The property comprises of entrance hall, open plan lounge / kitchen, inner hallway, two bedrooms and bathroom. The total floor area is approximately 527 SQ/FT (49 SQ/M).

Further advantages are the property has GAS CENTRAL HEATING, access to COMMUNAL GARDENS and is being offered with NO UPPER CHAIN.

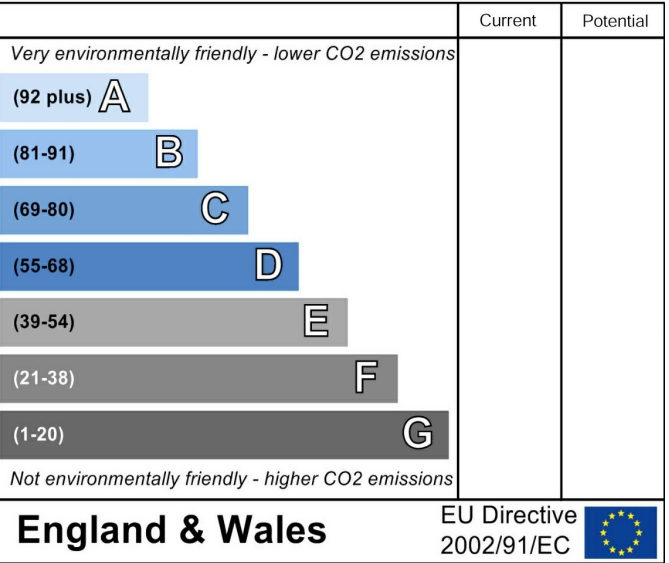
Shepherds Walk is located close to local schools and bus at Crest Road offering a short bus ride to Brent Cross shopping complex or by car you can get to Neasden or Golders Green. The nearest Stations are Neasden (Jubilee Line - Zone 3) or Dollis Hill (Jubilee Line - Zone 3). Local Authority London Borough of Brent. Council Tax Band C.



Energy Efficiency Rating



Environmental Impact (CO₂) Rating



Whilst every effort is made to give a fair description, the accuracy of these particulars is not guaranteed, neither do they constitute an offer or contract.

CHURCHILL & MATHESONS ESTATE AGENTS have not tested any apparatus, equipment, fitting or services and so cannot verify that they are in working order. The buyer is advised to obtain verification from their solicitor or surveyor. Measurements are correct to within +/-6 A sonic tape is used. None of the statements contained in these particulars or any of our properties are to be relied upon as a representation of fact.