



CHATTERTON | REES



283 Fulham Palace Road, London, SW6 6TL

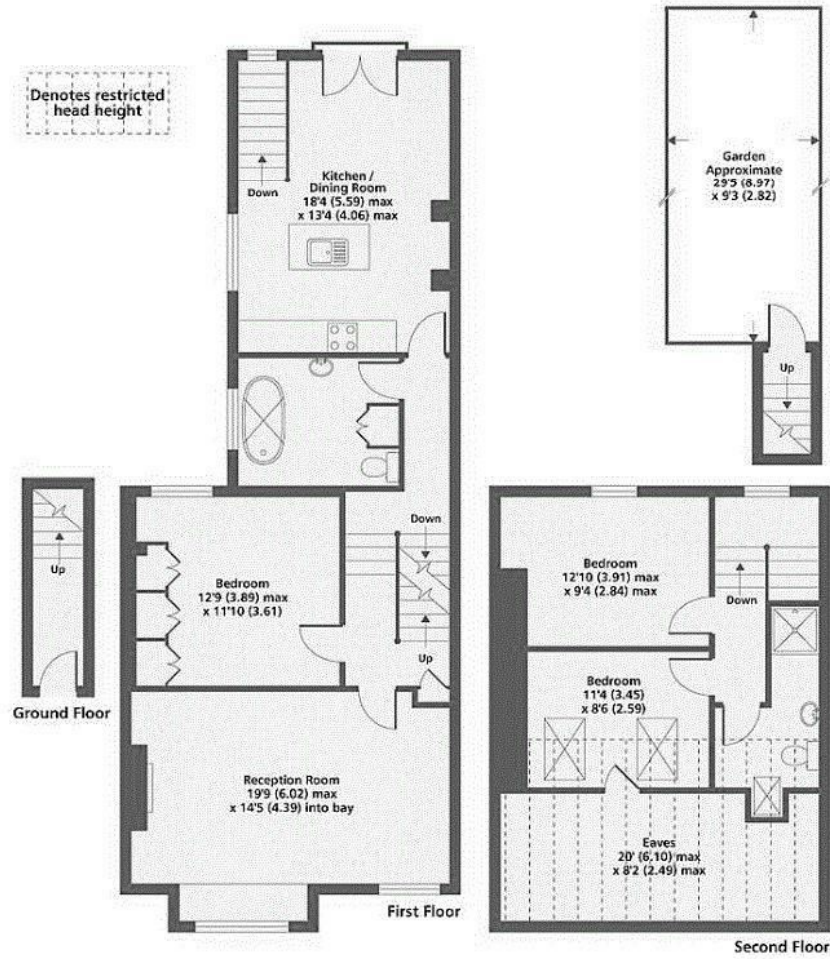
**£875,000**

A well presented three bedroom flat in Fulham, spanning over almost 1400sqft this is a great investment for any potential buyer, You have a large eat in kitchen to the back of the property with direct access down on to a private patio garden with a full width living room to the front, furthermore you have three double bedrooms and two bathrooms.

Located in between the muster Village and Bishops park on the Fulham palace Road with a number of local shops and cafes almost on your doorstep.



# Floor Plan



Fulham Palace Road SW6

Gross Internal Floor Area 1394 sqft 129.5 sqm (includes restricted head height)

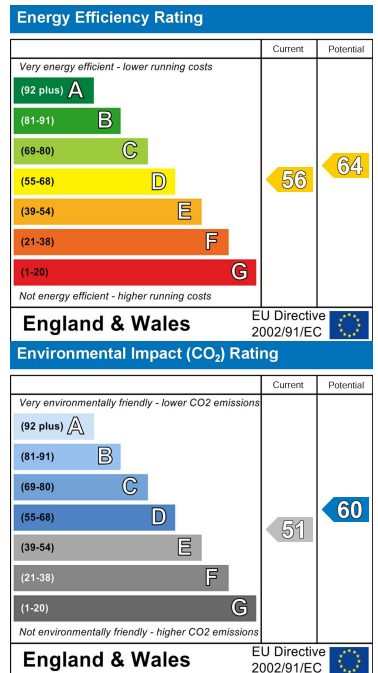
Copyright nichecom.co.uk 2017 REF : 196782

Whilst every attempt has been made to ensure the accuracy of the floor plan contained here, measurements of doors, windows and rooms are approximate and no responsibility is taken for any error, omission or misstatement. These plans are for representation purposes only as defined by RICS Code of Measuring Practice and should be used as such by any prospective purchaser. Specifically no guarantee is given on the gross internal floor area of the property if quoted on this plan and any figure given is for initial guidance only and should not be relied on as a basis of valuation.

## Area Map



## Energy Efficiency Graph



These particulars, whilst believed to be accurate are set out as a general outline only for guidance and do not constitute any part of an offer or contract. Intending purchasers should not rely on them as statements of representation of fact, but must satisfy themselves by inspection or otherwise as to their accuracy. No person in this firm's employment has the authority to make or give any representation or warranty in respect of the property.