



Hogarth Court SE19  
£265,000

020 8702 8111  
[pedderproperty.com](https://pedderproperty.com)

**pedder**





# In general

- A 1st floor purpose built apartment located in this popular residential development on the border of Dulwich and Crystal Palace.
- 1 double bedroom
- Light and bright lounge/dining room
- Fitted kitchen, bathroom
- Allocated parking space
- Popular location
- No onward chain

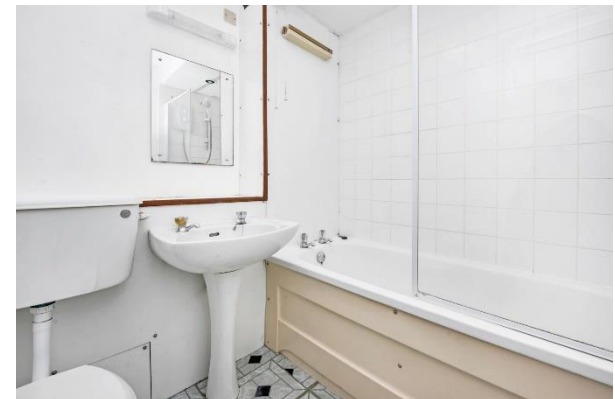
# In detail

A 1st floor purpose built apartment located in this popular residential development set back from Fountain Drive on the border of Dulwich and Crystal Palace.

The property offers accommodation comprising of 1 double bedroom with built in wardrobes, light and bright lounge/dining room, fitted kitchen and bathroom. Externally there is an allocated parking space to the rear of the development. The property will require some modernisation internally.

Hogarth Court is well located for access to nearby Dulwich Village and Crystal Palace with their numerous shops, cafes, restaurants and popular parks. Excellent rail links to central London are from nearby Sydenham Hill, Gipsy Hill and Crystal Palace stations.

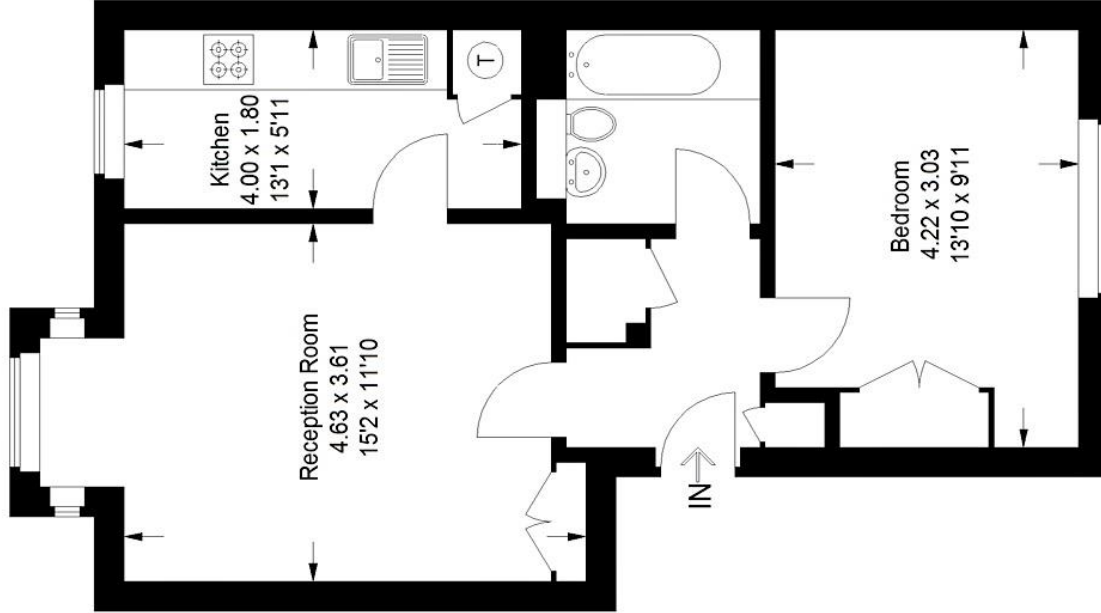
The property is offered with no onward chain.



# Floorplan

Hogarth Court SE19

Approximate Gross Internal Area  
48.0 sq m / 517 sq ft



## First Floor

Copyright www.pedderproperty.com © 2021

These plans are for representation purposes only  
as defined by RICS - Code of Measuring Practice.

Not drawn to Scale. Windows and door openings are  
approximate. Please check all dimensions, shapes and  
compass bearings before making any decisions reliant upon them.

Score	Energy rating	Current	Potential
92+	A		
81-91	B		82   B
69-80	C		
55-68	D	68   D	
39-54	E		
21-38	F		
1-20	G		

Pedder Property Ltd trading as Pedder for themselves and for the vendor/landlord of this property whose agents they are, give notice that (1) these particulars do not constitute any part of an offer or contract, (2) all statements contained within these particulars are made without responsibility on the part of Pedder or the vendor/landlord, (3) whilst made in good faith, none of the statements contained within these particulars are to be relied upon as a statement of representation or fact, (4) any intending purchaser/tenant must satisfy him/herself by inspection or otherwise as to the correctness of each of the statements contained within these particulars, (5) the vendor/landlord does not make or give either Pedder or any person in their employment any authority to make or give representation or warranty whatsoever in relation to this property.