



Kirton Close, London, W4 5UQ

£950,000

WHITMAN & CO.

SALES · LETTINGS · COMMERCIAL

- Three bedroom
- Extensive built in storage
- Sought after location

- 20' reception room
- West facing patio garden
- Fantastic transport links

Tenure - Freehold
Local Authority - Hounslow
Council Tax - Band E

THE PROPERTY

An immaculately presented three bedroom terraced house ideally situated in this central Chiswick location and within the sought after catchment area of Belmont Primary School. The accommodation comprises master bedroom with luxury ensuite, two further double bedrooms, luxury bathroom, 20' reception room, 12' fully fitted kitchen/breakfast room, cloakroom, extensive built in storage, private west facing garden with rear access. Centrally located offering close proximity to Turnham Green and Chiswick Park tube stations, local bus routes and the extensive shops, bars restaurants and cafes on Chiswick High Road and Turnham Green Terrace.

SITUATION

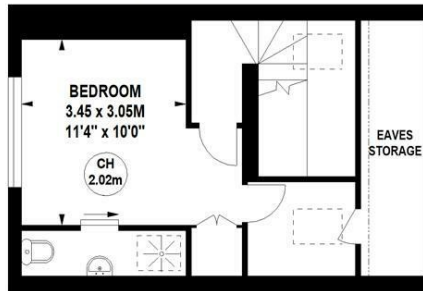


Kirton Close, W4

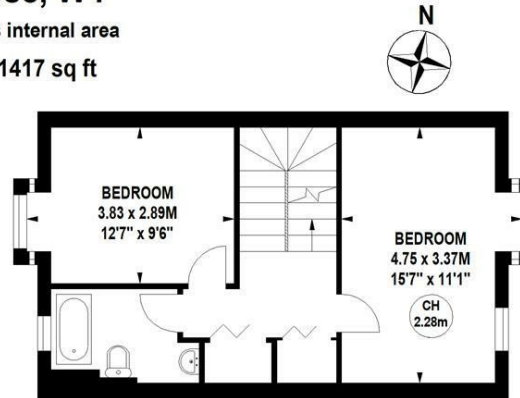
Approximate gross internal area

131.64 sq m / 1417 sq ft

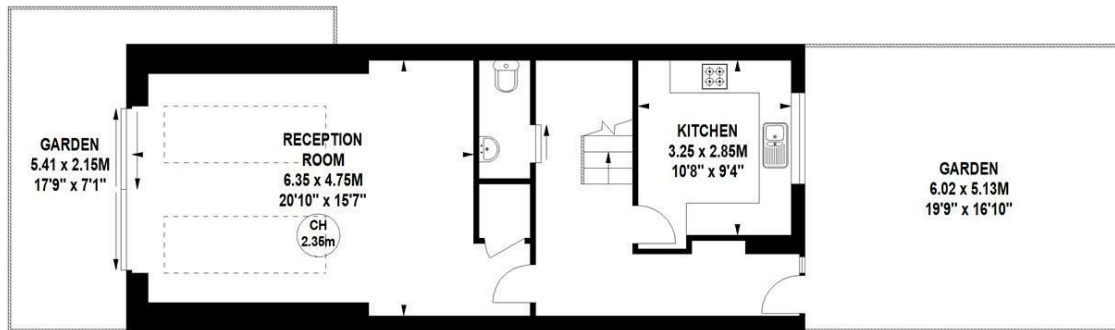
Key :
CH - Ceiling Height



Second Floor



First Floor



Ground Floor

Not to scale, for guidance only and must not be relied upon as a statement of fact.
All measurements and areas are approximate only