

West Kensington Court

West Kensington, London, W14

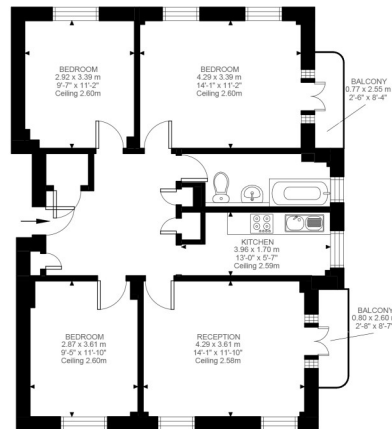




West Kensington Court

West Kensington, London, W14

Price Guide: £550,000



Fourth Floor
856 ft²

West Kensington Court, W14
Approximate Gross Internal Area
79.49 SQ.M / 856 SQ.FT

Illustration for identification purposes only. Not to scale.
Floor Plan Drawn According To RICS Guidelines.

A spacious three Double bedroom flat In West Kensington Court, a stunning portered development just off Edith Villas.

Located on the fourth floor, the property enjoys access to the private internal court yard gardens. West Kensington Court benefits from 3 passenger lifts (including 2 service lifts), CCTV & Entry phone.

The accommodation offers over 850 sq. ft. of living space, comprising of three good sized double bedrooms, with two private balconies, one balcony off the reception room and the other off the master bedroom. There are two further double bedrooms, a modern bathroom and separate kitchen. The flat is presented in good order throughout and benefits from ample storage and a share of freehold.

West Kensington Court is a secure building with a 24 hour porter service making an ideal purchase for buy to let investors, first time buyers, or as a pied a terre. Positioned moments From West Kensington underground station (District Line) & A4 close to local amenities and supermarkets as well as shops of Kensington Olympia and Earls Court and within easy reach of Hammersmith. Close to botanical greenery of Holland Park and within close proximity of Kensington High Street. Long Lease. Service charges include Hot water and heating

Three double bedrooms | Two private balconies | Separate kitchen | Modern bathroom
Portered block with lifts | Hot water and Central Heating included
Share of Freehold | 856 Sq. Ft (79.49 Sq. M)

All viewings by appointment through
our **West Kensington Office:**

T: 020 7385 5020
E: westken@lawsonrutter.com

1 Barons Court Road, London
W14 9DP

In accordance with the Property Misdescription Act 1991, we wish to emphasise that the information given in these particulars is intended to help you decide whether you wish to view this property. Whilst every care is taken to ensure the accuracy of these particulars please note that all measurements are approximate and we are, for the accuracy of other information, reliant on what the seller has provided. We strongly recommend that you rely on your own inspections and those of your advisors to establish the details of any aspects which are of particular importance. Please note that we have not undertaken any survey of the property or the appliances within it and the buyer must rely on their own investigations prior to exchange of contracts.

