



3 Buttercup Close

Little Canfield | Dunmow | Essex | CM6 4AJ



Exclusively Group
Real Estate

Step inside

3 Buttercup Close

Step inside this detached modern family home, and you immediately walk into the entrance hallway, with access to the sitting room, study, dining room, kitchen/breakfast room and downstairs cloak room as well and the staircase leading up to the first floor. On the first floor, you will find the master bedroom with ensuite shower room, three further bedrooms and a family bathroom.

Step outside into the south facing rear garden, and you will see the garden benefits from a patio area equipped with built in BBQ and food preparation area, low maintenance 50mm high quality artificial lawn, rear pergola with space to house a hot tub, and a rear gate leading onto the Flitch Way.

Buttercup Close is a small private development of recently built (2017) new homes. The desirable village of Little Canfield plays host to some excellent local amenities including a primary school, some excellent pubs and restaurants and is only a short drive to the towns of Great Dunmow, Bishop's Stortford, and Stansted Airport is only a 5 minute drive away.





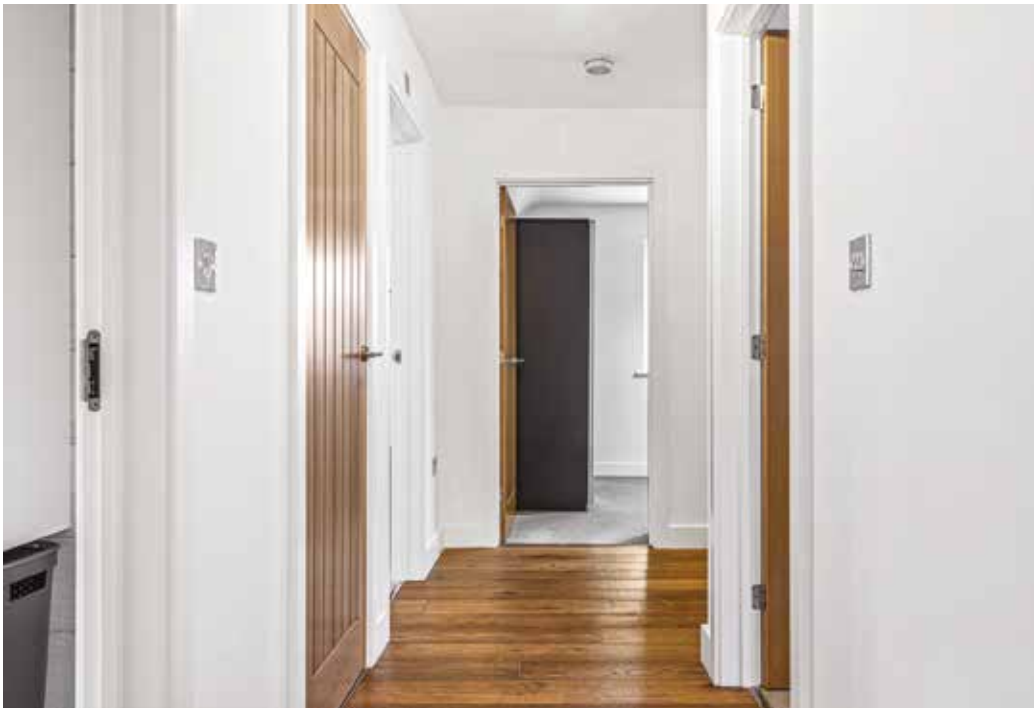


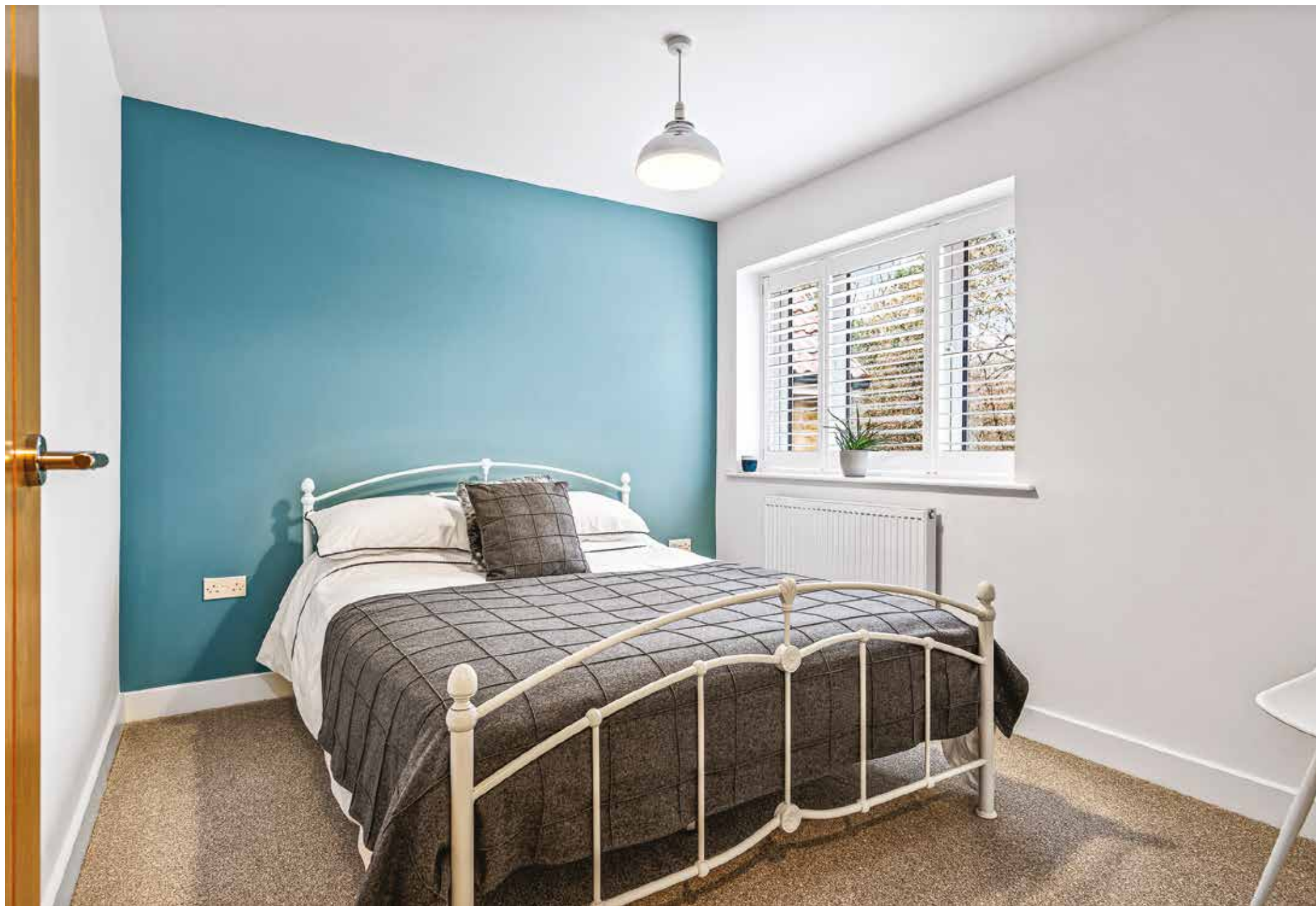










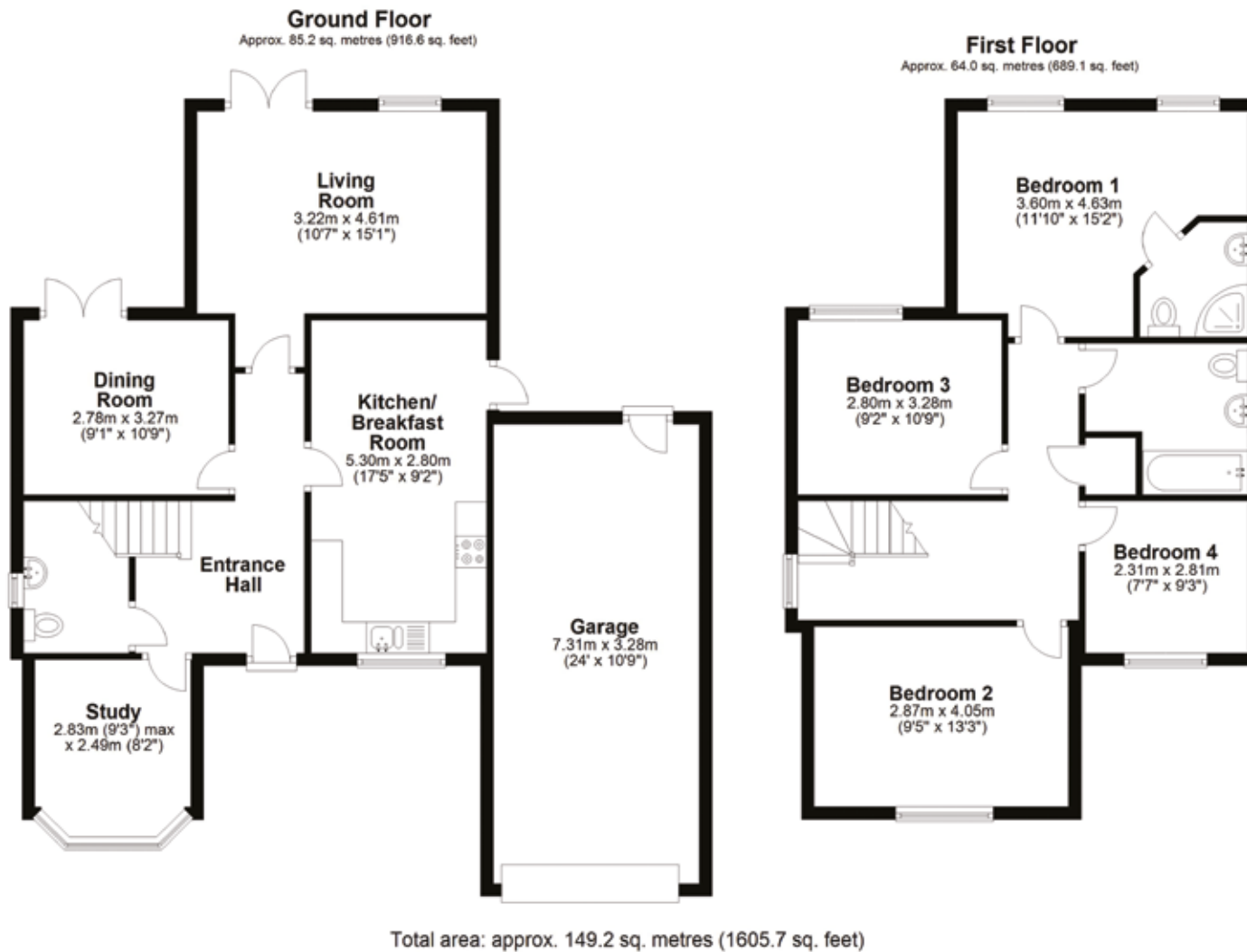












FOR ILLUSTRATIVE PURPOSES ONLY. NOT TO SCALE
Whilst every attempt has been made to ensure the accuracy of the floor plan shown, all measurements, positioning, fixtures, features, fittings and any other data shown are an approximate interpretation for illustrative purposes only and are not to scale. No responsibility is taken for any error, omission, mis-statement or use of data shown.
Property marketing provided by www.matthewkyle.co.uk

EPC B – 84/93

Agents notes: All measurements are approximate and for general guidance only and whilst every attempt has been made to ensure accuracy, they must not be relied on. The fixtures, fittings and appliances referred to have not been tested and therefore no guarantee can be given that they are in working order. Internal photographs are reproduced for general information and it must not be inferred that any item shown is included with the property. For a free valuation, contact the numbers listed on the brochure. Copyright © 2022 Exclusively Group Real Estate. Registered in England. Company Reg No. 14052310 Registered Office: Imperial House Victoria Place Chelmsford CM1 1NY Exclusively Group Real Estate is a trading style of TEGRE Limited.



Exclusive Group Real Estate

Imperial House, Cottage Place, Victoria Road, Chelmsford, CM1 1NY

Tel: +44 (0)1245 200365 | [exclusivelygroup.com](https://www.exclusivelygroup.com)