

Location:

Key points:

# Do Better:

Aston Rowe

**Acton:**  
E acton@astonrowe.co.uk  
103-105 Churchfield Road,  
London W3 6AH  
T 020 8992 3600

**Brook Green & Hammersmith:**  
E brookgreen@astonrowe.co.uk  
82 Shepherds Bush Road,  
London W6 7PH  
T 020 7871 6997

UNIT 3

SECOND FLOOR

ONE BEDROOM FLAT

Help to Buy

Backed by HM Government

Balcony

Ensuite

Bedroom

Kitchen/Living/Dining

TOTAL AREA

Excludes balcony

37 sqm

401 sqft

KITCHEN + LIVING

BEDROOM

ENSUITE

BALCONY

8.3m x 4.4m

3.5m x 3.3m

2.4m x 1.5m

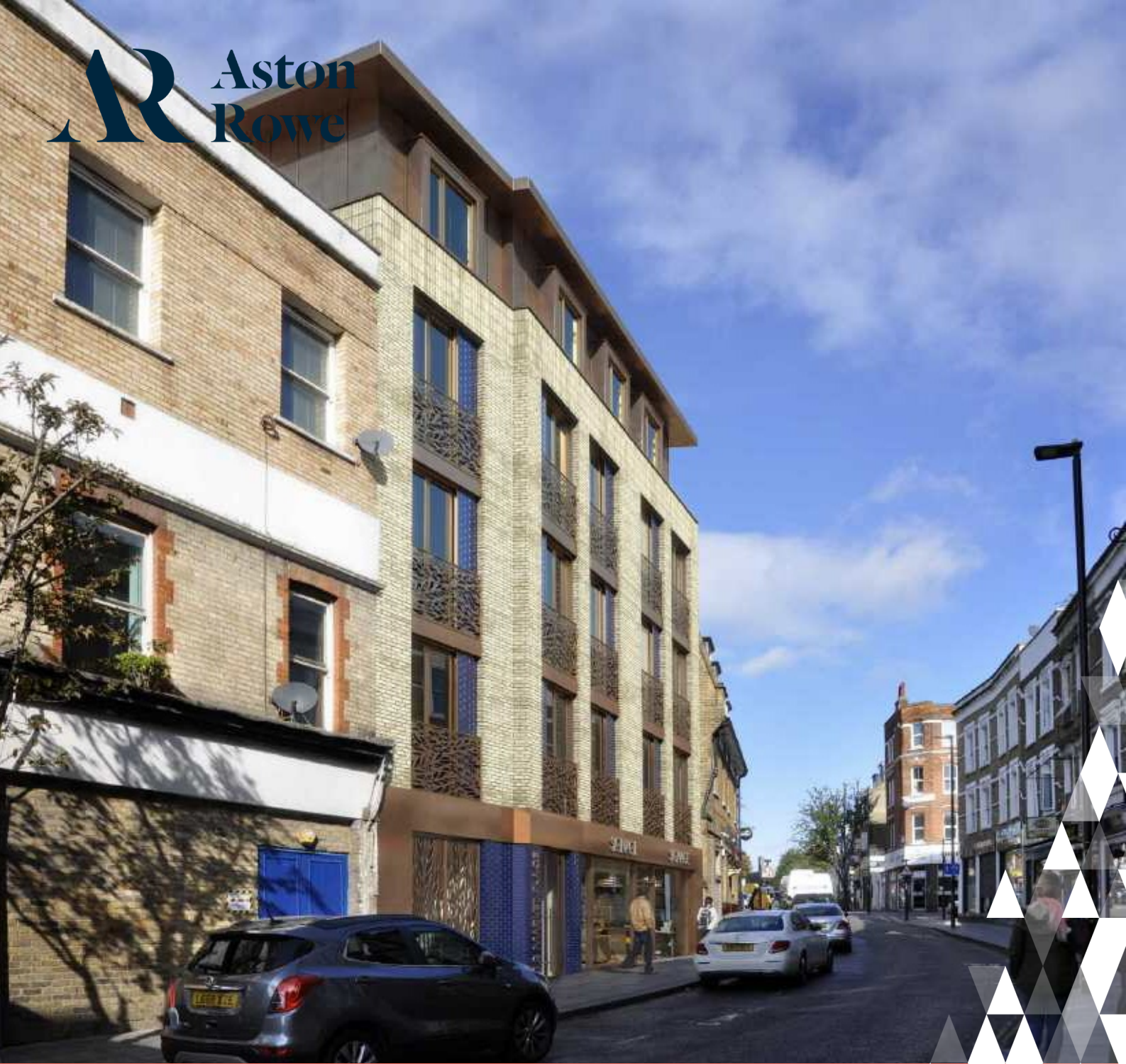
3.2m x 1.7m

27'1" x 14'4"

11'7" x 10'11"

7'9" x 4'10"

10'7" x 5'8"



**Asking price £420,000**  
Market Place,  
London W3 6QS

- 1 Reception rooms
- 1 Bedrooms
- 1 Bathrooms



The current owner says:

HELP TO BUY AVAILABLE! OVER 40% OF THE DEVELOPMENT SOLD!

Prices starting from £415,000!

FLAT 2 - Set on the first floor this 525 sqft one bedroom apartment has an open planned living/kitchen area and benefits from a double bedroom with modern family bathroom. The apartment also benefits from a private balcony. Market Place is a sophisticated development of one and two bedroom luxury apartments in a contemporary and elegantly designed building. Each apartment has been architecturally designed to create the perfect home in which to relax, unwind and entertain. Each apartment has the benefit of its



What's better:

